

Crawford RV Park

4320 S Broad St
Scottsboro, AL 35769
256-574-5366

Email: crawford@scottsboro.org
Website: www.crawfordrvpark.com



FROM US Hwy. 72 take the Broad St. Exit (this is Hwy. 279 South). FROM Chattanooga DO NOT TAKE 279 Exit on east side of town, watch for mile marker 137 exit on Broad St. Park on right 2 miles.

• 21 total RV sites, can accommodate RVs up to 40 ft • All sites are full hookup • 30/50 amp electric • All concrete pads/patios • New pull-through sites • Phone available, modem friendly, free Wi-Fi • 64 channel cable TV • Paved interior road



Must present All American RV Parks membership card for discount: • 50% off regular rate. Rate is good for available days. • \$2 additional per day for 50amp service. • \$2 per night for space heaters. • Reservations not required, but recommended for availability. • 35 miles from Huntsville, AL, 65 miles from Chattanooga, TN, and 23 miles from Guntersville, AL.

Cypress Landing RV Park

32249 Riverland Dr
Dozier, AL 36028
334.388.1008

Email: reservations@clrvpark.com
Website: www.clrvpark.com



From Highway 29 North from Andalusia, AL, go 9 miles through Gantt, go 5 miles and look for 59 mile marker. Campground is located just past the marker on the right. Campground is located on Gantt Lake.

• 63 spacious, fully equipped sites that will accommodate any RV • pull-thru and back-in sites • Each lot provides ample space for both an RV and a car • Every campsite has a picnic table and patio area • Electric hook ups (50, 30 and 20amp) • water • sewer • free Wi-Fi • cable TV • playground • corn-hole game • horseshoes • basketball court • super water slide



Must present All American RV Parks membership card for discount: • 50% off regular rate • Rate is good for 2 days

Gandy's RV Park
3131 Old Atmore Rd
Flomaton, AL 36441
251-296-5171



IF USING GPS: DO NOT USE LAMBERT RD. FROM Pensacola, FL: Take I-10 to Hwy 29 North, 34 miles to Flomaton, AL, turn left (west) at the first red light, and go three miles. Gandy's RV Park will be on the right. FROM HWY 31 (between Atmore and Flomaton): Turn onto County Rd. 2, and go three miles to park on the left. FROM Montgomery, AL: Take Hwy 29 to Flomaton, turn west on College St., go three miles, and the park is on the right. FROM I-65: Take Hwy 113 South, 23 miles, and turn right onto Hwy 29 South (to Flomaton). Then turn west on College St., go three miles, and the park is on the right.

• 25 full hookup RV sites, pull thru, can accommodate RV's up to 70' • 15/20/30/50 amp service • Dump station • Showers, restrooms • Washer & dryer • Picnic tables • Large area to walk dogs • Garbage pickup • Park is located between Atmore and Brewton, AL, and is only 16 miles to either town



Must present All American RV Parks membership card for discount: • 50% off regular rate. Rate is good for 5 days. • All Pets must be leashed, cleaned up after & with owner while outside of RV.

Just Loafin RV Park
7551 State Hwy 153
Samson, AL 36477
850-307-8922

Email: justloafinatlake@yahoo.com



FROM Samson, go West on Hwy 52 to Hwy 153, then left (South) 7 1/2 miles. Entrance on left. FROM DeFuniak Springs FL, go North on Hwy 83 to Alabama Line (changes to Al 153). Park is 1 1/2 miles past the state line, on the right.

• 20 total RV sites with 30 & 50 amp service • 7 Pull-through sites • Huge grassy sites with cement patios on 21-acre farm, can accommodate any length RV • Tent sites available • Clubhouse with kitchen for pot lucks, cards, games or just loafin • Laundry, shower, courtesy phone and modem hookup • Seven-acre lake for fishing (no license required) or birdwatching • On site RV Repairs are available



Must present All American RV Parks membership card for discount: • 50% off regular rate. Rate is good for open days. • \$2 additional fee for electric heater or air conditioner. • Located twenty miles from DeFuniak Springs, FL and fifty miles from Dothan, AL.

KV's RV Park
1720 Wall LN
Hartselle, AL 35640
256.303.4856

Email: campingisourbusiness@gmail.com
Website: www.kvsvr.com



Located 2 miles from Hartselle and 7 miles from Decatur. Exit 328 W from I-65, go just past Jet Pep Gas Station. Turn right onto Shull Road, and turn right onto Kyle Road. Turn right onto Wells Lane. You will see the RV Park from Kyle Road. Conveniently located just off Interstate 65, our campground is situated about halfway in between two of the South's most popular tourist destinations, Alabama beaches to the South and Tennessee mountains to the North.

• Large rigs welcome • 20 total RV sites • dump station • 30 and 50 amp sites • All sites are pull thru • All sites have water and sewer hook-ups • laundry facility • restrooms • free Wi-Fi • covered and open storage for RVs, boats, vehicles, and other large items Pets are welcome.



Must present All American RV Parks membership card for discount: • 50% off regular rate • Rate is good for week days

Lakeside RV Park
5664 US Highway 280 East
Opelika, AL 36804
334.705.0701

Website: www.lakesidervparkopelikaal.com



From Junction I-85 (Exit 62) and U.S. Hwy 280 in Opelika, Alabama, go 4.5 miles East on 280. Enter on Left.

• Open all year • Electric, Water, Sewer • 60 Acres of Beautiful Wooded Camping • 50 Amp Pull-Thru Sites (Typical site width 40 ft , 50 Full hookups, 36 pull-thru) • Some Extended stay sites • Staff will escort to Site • Free Wireless Internet and Cable • Tenting area • Leashed Pets Welcome • Recreation -- Pond Fishing • Golf Nearby • Children's Playground equipment • Picnic Tables • Laundry facilities • Bathhouse facility



Must present All American RV Parks membership card for discount: • 50% off regular rate • Rate is good for 3 days • Monday/Tuesday/Wednesday • Valid January through June • Rate is for 2 people • For each other person is \$5.00 per person

Mill Creek RV Park

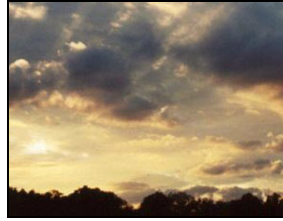
28861 Veto Rd
Elkmont, AL 35620
256-732-3686

Email: mlmc@hiwaay.net
Website: www.millcreekrv.com



FROM Interstate 65: Exit 361 (Alabama), West to Elkmont (4.5 miles); North (right) at Elkmont stop sign (look for RV sign); Then north again (left) at the "Y"; Approximately 3 more miles to Mill Creek. After Robinson Road, look for the blue train caboose in entrance on left.

• 25 total RV sites • 30/50 amp, water, and sewer • Wireless Internet • Twenty 65ft. pull-thrus (plenty of room for slide outs and awnings) • Hot showers year round • Laundry • Walking/hiking trails, wildflowers, wildlife, rock bottom creek • Horseshoes, picnic tables, firewood, fire rings • Courtesy phone • Biking • Pavilion seats sixty+ • Full kitchen • RV Storage is Available!



Must present All American RV Parks membership card for discount: • 50% off regular rate. Rate is good for 1 day, additional nights \$19/night, no limit • Discount valid Mar-Dec, subject to availability • No multiple discounts • Reservations required for holidays • Visa & Mastercard only • Call from Interstate to have gate opened after sundown • Children must be with parent at all times • Pets welcome, must be leashed and cleaned up after • *Rates are for two people, \$1 additional per night for each extra person

Montgomery South RV Park

731 Venable Rd
Hope Hull, AL 36111
334.284.7006

Email: resv@montgomerysouthrvpark.com
Website: montgomerysouthrvpark.com



Located 8 miles from Montgomery. Exit 158 from I-65. Turn past Stuckey's then first left turn onto Venable Road. Go one mile to RV Park which is located on the left side of the road.

• 23 Sites • 50/30 Amp • Pull Through RV Sites 70' x 40' • 100% Full RV Hookups • Electric • Water • Sewer • Gravel & Grassy Sites • Clubhouse • Private Bathrooms • Shower Facilities • Laundry Room • Wi-Fi Internet • Pets Welcome



Must present All American RV Parks membership card for discount: • 50% off regular rate • Rate is good for 3 days • \$5 for 50AMP service

Parnell Creek RV Park

115 Parnell Cir
Woodville, AL 35776
256-508-7308

Email: parnellcreekrvpark@yahoo.com

Website: www.parnellcreekrvpark.com



FROM Huntsville: Take US Hwy. 72 east to mile marker 125. Turn right onto Parnell Circle. FROM I-59: Exit Ft. Payne, take US 35 to Scottsboro. FROM Scottsboro: Take US 72 west approx. 14 miles and turn left on Parnell Circle.

• 46 total RV sites, 38 full hook-up, can accommodate any size RVs (big rig friendly) • 22 pull throughs • 30/50 amp service • Showers & Laundry • Wi-Fi • All sites have a fire ring and picnic table • Ice, small Store, Propane • Mini-golf, playground, horseshoes, and basketball • Pool, salt water swimming pool • Clubhouse, game room, and fitness/tanning center • Dump station • Tent sites available.



Must present All American RV Parks membership card for discount: • 50% off regular rate. Rate is good for 3 days. Discount is not valid Memorial Day weekend, July 4th weekend, and Labor Day weekend. • Rate is based on two people, \$2 per day for each additional person. • \$5 additional charge for 50amp service. • Credit cards accepted for \$1 fee. • Located 12 miles from Scottsboro and 24 miles from Huntsville.

Sun Runners RV Park

19480 County Rd 8
Gulf Shores, AL 36542
251-955-5257

Email: sunrunnersrv@gulftel.com



FROM I-10 take Loxley exit (Highway 59 S) to County Rd. 8 West, right on County Road 8, 1/2 mile. 3 miles to Tanger Market Outlet and Wal-Marts, 5 miles to Gulf beaches, 1 mile to OldTime Pottery.

• 60 total RV sites, can accommodate RVs up to 40 ft. as well as 23 tent sites • 20/30/50 amp service • Back ins and pull thru • Full and Partial hook-ups • Wi-Fi available • Cable TV • New large bath house and restrooms • Laundry room • Dump station • Exercise room • Large shady sites.



Must present All American RV Parks membership card for discount: • 50% off regular rate. Rate is good for 1 day. • Prices are subject to change. • Please call ahead to check availability. • January through March, rates are for two people. \$3 for each additional person up to 3-4 people.

SunChase RV Park

11583 Grantham Rd
Foley, AL 36535
251.600.9170

Email: foleysunchaserv@yahoo.com

Website: foleysunchaserv.com



Located 3 miles from the heart of Foley, AL. From Highway 59 and 98 travel West 3 miles then turn South onto Grantham Road. SunChase is located on the West Side.

• Free WiFi • Restrooms • Showers • Laundry House • Picnic Area • Full Hook Ups



Must present All American RV Parks membership card for discount: • 50% off regular rate • Rate is good for 3 days.

Butterfield RV Resort & Observatory

251 S Ocotillo Ave
Benson, AZ 85602
800-863-8160 • 520-586-4400

Email: reservations@rv-resort.com

Website: www.rv-resort.com



FROM I-10: Take Exit 304, toward Ocotillo Ave/Benson. South on Ocotillo into Benson. Located on the left past the first stop light.

• 173 landscaped RV sites with full hook ups • 20, 30, and 50 amp service • 28' wide roads with drive-over curbs • 24 paved and level Pull-Thru sites • 50 extra-wide Back-In sites • Ideal for park model homes or long term guests • 123 spacious back in sites measuring at least 30' X 50' • On site propane available for our guests • Dump Station • Cable, WiFi • Laundry, Hot Showers, Restrooms • Heated Pool, Hot Tub, Gym, BBQ • Fitness Center, Game Room, pool table, Library/Computer room • OBSERVATORY • Camp Store, Wood Shop, Ham Radio Shack • Banquet Hall • Store/gift shop, Propane • Clubhouse • RV storage available



Must present All American RV Parks membership card for discount: • 50% off regular daily rate. Rate is good for 14 days. • Discount available April - September, please call for discount October - March. • No campfires allowed. • Credit cards accepted. • Pets allowed, no dangerous breeds (3 pet limit). • Rates based on two people, \$2.50 additional charge per extra person per day (plus tax). • Located 23 miles from Tombstone and 40 miles from Tucson.

El Molino Mobile Home & RV

1552 West Miracle Mile Rd

Tucson, AZ 85705

520-888-3181

Email: mikemerlander@yahoo.com



FROM Hwy 10, take Grant Road, Exit 256. Turn East 1/2 mile and go to Oracle Rd. Turn left (North). Go to Miracle Mile Rd (Hwy 77). Turn left (West) just past Flowing Wells Rd. Veer to right and take first entrance into El Molino Mobile Home Park.

• 103 Space Mobile Home Community with 6 designated Full Hookup Large (40') RV Spaces • 30/50 amp electric • Back ins • Laundry facilities, restrooms, showers • Swimming pool and recreation clubhouse • Business office provides fax, photocopies, and Wi-Fi Internet • Pets welcome • Conveniently located adjacent to Hwy 10 and only minutes from museums, golfing, and downtown Tucson restaurants



Must present All American RV Parks membership card for discount: • 50% off regular rate. No maximum stay with Discount. • December through April, reservations are highly suggested and limited number of sites available. • Extended stay discounts available, call for details. • *Tax and Electric included. • Rates subject to change. • Open year-round!

Fortuna de Oro RV Resort

13650 N Frontage Rd

Yuma, AZ 85367

928-342-5051

Email: valariew@cal-am.com

Website: www.cal-am.com/resorts/resorts_details.php?resorts_id=31



• 9-Hole regulation golf course, Fitness center, On-site restaurant, Pickleball courts, Shuffleboard, Themed events, Bocce ball, Dog agility course, Live music and dancing, Quilting and sewing, Swimming pools & spas, Tennis courts



Must present All American RV Parks membership card for discount: • 50% off regular rate. Rate is good for 2 days.

Good Life RV Resort

3403 E Main St
Mesa, AZ 85213

480-832-4990 • 800-999-4990

Email: estherm@cal-am.com

Website: www.cal-am.com/resorts/resorts_details.php?resorts_id=26



- Swimming pools & spas, Fitness center, Tennis courts, Pickleball Courts, Shuffleboard, Themed events, Bocce ball, Dog agility course, Live music and dancing, Quilting and sewing, Wood shop, Computer lab



Must present All American RV Parks membership card for discount: • 50% off regular rate. Rate is good for 2 days.

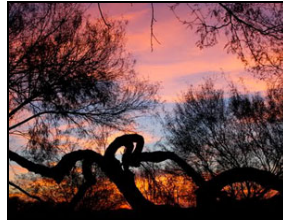
Hidden Cove RV Park

2450 W Water St
Yuma, AZ 85364
928-783-3534



FROM I-8 exit Ca. 172 Winter Haven and 4th Ave, turn Right onto 4th Ave. From 4th Ave turn right onto 1st St. Hidden Cove RV Park is the second RV park on Water St.

- 117 total RV sites, can accommodate RVs up to 40' • 15/30/50 amp, back-ins, full hookups • Wi-Fi, restrooms, showers, laundry • BBQ, biking, boat ramp, boating, canoeing, clubhouse, fire rings, hiking, fishing, horseshoes, nature watching, pool table, and shuffleboard



Must present All American RV Parks membership card for discount: • 50% off regular rate. Discount is good for 2 days. • Located 30 miles from Wellton and 60 miles from El Centro.

Mesa Spirit RV Resort
3020 East Main St
Mesa, AZ 85213
480-832-1770 • 877-924-6709
Email: gm@mesaspirit.com
Website: www.mesaspirit.com



FROM Phoenix: I-10 eastbound will connect with 202-Red Mountain Freeway, take 202 eastbound. Then exit at Gilbert Rd, go south on Gilbert to Main St. Go east on Main St to resort. FROM Tucson: I-10 westbound to Hwy 60, go east on 60, exit at Gilbert Rd. Then go north on Gilbert to Main St, and go east on Main St to resort.

• 1,800 sites can accommodate Class A, Class B and Class 3 vehicles all of which are fully contained and up to 50 feet in length and pull through spaces can accommodate up to 75 feet in length • 3 swimming pools, 5 heated spas • Lighted tennis courts and shuffleboard courts • Putting Green, driving cage • Horseshoe pits, picnic areas with gas BBQ grills • Billiard tables, library and ballroom • Two fitness facilities, bathhouses, laundry facilities, ice machine • Pet friendly • [You Tube Video Link](#)



Must present All American RV Parks membership card for discount: • 50% off regular rate. Rate is good for 2 days. • Must have a 3-inch sewer hook-up. • Located 11 miles from Tempe and 25 miles from Phoenix.

Phoenix Metro RV Park
22701 N Black Canyon Hwy
Phoenix, AZ 85027
623-582-0390

Email: info@phoenixmetrorvpark.com
Website: www.phoenixmetrorvpark.com



Located 1/2 mile N of Deer Valley Rd, on the east side of I-17.

• 310 total RV sites, can accommodate RV's up to 43 feet • All full hookups, sewer, 30/50 amp • Back-ins • Wi-Fi • Handicap access • Restrooms, showers, laundry • BBQ, fitness center, club house, game room, pool table, hot tub, picnic area • RV storage, recycling center • Horseshoes, propane, heated pool, shuffleboard, ping pong, phone and ice.



Must present All American RV Parks membership card for discount: • 50% off regular rate. Discount in valid May through September, rate is good for 2 nights. • Credit cards accepted.

Red Barn Campground

711 N Madison
Benson, AZ 85602
520.586.2035

Email: moetter80@gmail.com



The campground is located within two blocks of an 18 Hole Golf Course. Tombstone, AZ is only 24 miles and Kartchner Caverns State Park is 12.5 miles. From I-10, take Exit 304, go North 150 ft. Turn East across from Denny's, black top turns to gravel. Red Barn Campground is the second park.

• 36 Large Pull Thru RV sites that can accommodate rigs up to 45ft • Community Restrooms • 30 Amps • 50 Amps • Water Hookups • Sewer Hookups • Pet Friendly • Dump Station • Cable Hookups • WIFI Hotspot • Laundry Facilities



Must present All American RV Parks membership card for discount: • 50% off regular rate • Rate is good for 7 days

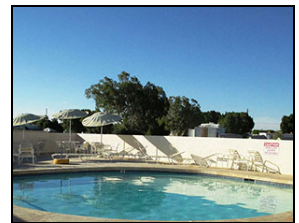
Sundance RV Resort

13502 N Frontage Rd
Yuma, AZ 85367
928-342-9333

Email: nancyb@cal-am.com



• Horseshoes, Shuffleboard, Curling, Pitch & Putt, Ballroom, Pickleball



Must present All American RV Parks membership card for discount: • 50% off regular rate. Rate is good for 2 days.

Tradewinds RV Park
152 S Emery Park Rd
Golden Valley, AZ 86413
928-565-5115

Email: info@tradewindsrvpark.com
Website: www.tradewindsrvpark.com



Located on State Hwy 68, midway between Kingman, AZ and Bullhead City, AZ. Take Hwy 68 W of Kingman approximately 15 miles and we are located directly behind the Off-Road Diner & Bar; or take Hwy 68 E out of Bullhead City, AZ approximately 15 miles. Located on the south side of the hwy.

• 107 sites can accommodate RVs up to 65 ft., Full hookups, pull throughs • 50 Amp Service • Dump station • Wi-Fi • New large laundry • 24 hr on-site management • Handicap access • Store • Restrooms and showers • Gameroom, pool table, picnic area, 9-hole Disc Golf • RV storage • Fire rings • Phone • Propane, Ice, BBQ • Lots of trees & landscaping • High desert climate with mild temperature year-round, superior mountain view



Must present All American RV Parks membership card for discount: • 25% off regular rate. Rate is good for 3 nights. • Credit cards accepted. • Pets welcome. • Rates (plus tax) are for two adults and one child under 12, \$2.50 per each additional person. • \$5 additional for 50-amp service. • Open year-round. • Located 15 miles from Kingman and 17 miles from Bullhead City & Laughlin. Please contact us directly as some sites do not offer 50 amp service.

Val Vista Villages RV Resort
233 N Val Vista Dr
Mesa, AZ 85213
480-832-2547

Email: jodih@cal-am.com
Website: www.cal-am.com/resorts/resorts_details.php?resorts_id=2



• Swimming pools & spas, Fitness center, Tennis courts, Pickleball Courts, Shuffleboard, Themed events, Bocce ball, Dog agility course, Live music and dancing, Quilting and sewing, Wood shop, Computer lab



Must present All American RV Parks membership card for discount: • 50% off regular rate. Rate is good for 2 days.

Beaver Dam Cottages & RV Park

8172 Highway 187
Eureka Springs, AR 72631
479.253.6196

Email: beaverdam2@basicisp.net

Website: www.beaverdamcottage.com



From Rogers Arkansas, take Highway 62 East to Highway 187 South (The Scenic Loop). Turn right and go 1 mile. Campground is on the right side of the road. From Eureka Springs go west, take second 187 left on scenic loop. Campground will be on the right. Beaver Dam RV Park is located 7 miles from Eureka Springs and 20 miles from Rogers.

• 14 RV sites that can accommodate RVs up to 35 ft. • Water, electric and sewer • 20 / 30 amp service • Clean showers and washroom facilities • Laundry facility • Food, bait and tackle store • Antiques store • Picnic areas • grills • shade trees abound



Must present All American RV Parks membership card for discount: • 50% off regular rate • Rate is good for 7 days • 36 ft. RV, no longer • Not valid during the holidays • Cash only

Cherokee Lakes RV Park

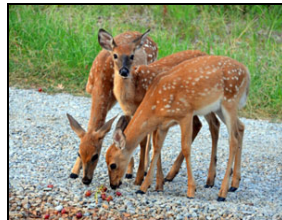
14000 Arlan Rd
Alexander, AR 72002
501-847-1288

Email: aorpharris@hotmail.com



FROM I-30 Eastbound EX126 to I-30 Frontage Rd. for .6 mi to R on Vimy Ridge Rd. at T & go 3.3 mi. to 3rd 4-way stop. Turn R on Germania Rd for .8 mi. Turn R on Arlan Rd. Enter gate code & drive by lake & bear L onto Pam. Follow signs to office. FROM I-30 Westbound EX128 Mablevale/Otter Creek Rd. Merge on I-30 Frontage Rd, go .7 mi. After overpass, turn R on Vimy Ridge Rd (signs for Shannon Hills) go 3.7 mi to 3rd 4-way stop. Turn R on Germania, go .8 mi. Turn R on Arlan, enter gate code & follow road, taking L forks when possible to office. Call 501-626-0197 or 501-626-0198 or 501-847-1288 for access code.

• There are 35 RV sites, 17 site with full hook up, 18 Electricity only sites • Gravel roads and sites • 60' pull-thrus, back-ins sites, 30/50 amp • Wi-Fi in office • Pavilion w/large fireplace • Manager on-site • 3 small fishing lakes with two waterfalls • City water & dump station • Showers & restrooms • Handicap accessible • Hiking, nature watching, fishing, ice, horseshoes, fire rings, boating



Must present All American RV Parks membership card for discount: • 50% off regular rate. Rate is good for 4 days. • Discount available Monday-Thursday with current Discount card. • Rate is not valid weekends & holidays. • Pull-throughs electric 50% discount off \$35 rate 7 days a week with current Discount card. • No credit cards. • Pets on leash only. • Open year-round!

Dogwood Springs Campground

Hwy 7 @ Dogwood Ln

Jasper, AR 72641

870-446-2163

Email: dogwoodspringscampground@yahoo.com

Website: www.jasperdogwoodcabinsandrvc.com



1 mile North of Jasper on Scenic 7.

• Pool • Onsite Laundry • Small Store • Bathhouse • Shaded Sites • CATV • Cabins with Kitchenettes and Fireplace • Shaded FHO RV Sites • Tent Areas • 30/50 Amp • Picnic Tables • Firepits • WiFi Hotspots



Must present All American RV Parks membership card for discount: • 50% off regular rate • Rate is good for 2 days

Golden Pond RV Park

241 HWY 330 S

Shirley, AR 72153

501.723.8212

Email: goldenpondrvpark@gmail.com

Website: www.goldenpondrvpark.com



Located 28 miles from Mt. View. From Clinton at junction of Hwy 65 and 16, go East 1.9 miles on 16, turn right onto Burt Ridge Rd. to the first stop sign (approximately 8 miles) which is junction with 330. turn left, 2.5 miles to park on highway 330. Park is located on the corner of junction 16 and 330.

• 54 Full Service RV sites that will accommodate RV's up to 65ft • Fishing pond • Walking Trails • full service marina nearby • activity center • BBQ • biking • canoeing • golfing • skating • nature watching • picnic area • recycling center • 20/30/50AMP service • FREE Wi-Fi and Cable • hot spring hot tub • Small boat available for rent by the hour to use in the fishing pond • Fire rings • Firewood • Laundry • Camping Store • Recreation Hall • Propane Filling Station • trailer storage for campers



Must present All American RV Parks membership card for discount: • 50% off regular rate • Rate is good Monday through Thursday

Grizzly's RV Park

3101 S Division St
Blytheville, AR 72315
870-623-4971 • 870-623-4970
Email: grizzly9998@yahoo.com
Website: www.grizzlysrvpark.com



Located 1/2 mile off of Interstate 55. FROM South 55: Exit at 63. Go to stop sign and turn left. 1/2 mile on left. FROM North: Exit 63. Go to stop sign and turn right. 1/2 mile on left.

• 50 total RV sites • We can accommodate RVs up to 45' • Full hookups • 30/50/110 amp available • Wi-Fi • City water, sewer, electric, trash • Public bath house with restroom and shower • Laundromat • 3 pull through spots • Turn around at end of park • Security and owner on site • Located 1 1/2 miles from Blytheville Business District and 19 miles from Hayti, MO



Must present All American RV Parks membership card for discount: • 50% off regular rate. Rate is good for 7 days. • Discount is valid for one week. • Speed limit 10 MPH. • Pets are allowed but must be leashed. • Open year-round.

Whitney Lane RV Park

597 Whitney LN
Kensett, AR 72082
501.230.8000
Email: monamcf@swbell.net
Website: whitneylanerpark.com



Exit 45 from State Route 67, North 367 to 36 East, Left on Whitney Lane

• wi-fi • onsite propane tank refills • laundry facilities • long-term rentals • riverfront views • picnic tables • concrete runners



Must present All American RV Parks membership card for discount: • 50% off regular rate

Gold Trail RV Park

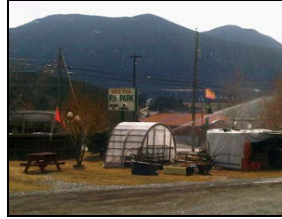
1640 Cariboo Hwy
Clinton, BC V0K 1K0
250-459-2638

Email: goldtrailrvpark@telus.net



In Clinton, B.C., north end of town on Hwy 97 N.

• 57 total RV sites, can accommodate RVs up to 75 ft • 15/30 amp service available • Laundromat • Wi-Fi • Restaurant • Internet • Fire pits • Hot showers • Restrooms • Dump station • Grassy sites • B.B.Q. Buffet served nightly (Steak, Salmon, Chicken, and Ribs From Only \$9.99)



Must present All American RV Parks membership card for discount: • 50% off regular rate. Rate is good for 2 days.

Kreekside Motel, Campground & Trailer Court

39142 Cariboo Hwy
Hixon, BC V0K 1S0
250-998-4700

Email: gclark@goldcity.net

Website: www.kreekside.com



38 miles (60KM) south of Prince George and 38 miles (60KM) north of Quesnek. Located in Central British Columbia, in the village of Hixon on the East side of Hwy 97. (The main western route from the lower US to Alaska.)

• 22 total RV sites • Accommodates any size RV • Wi-Fi (available in office) • Pets accepted at our discretion / additional fee - Pets must be attended at all times • Pan for gold • Fishing in season



Must present All American RV Parks membership card for discount: • 50% off regular rate. Rate is good for 2 days.

Bear Mountain RV Resort & Campground

14216 Bear Mountain Rd

Redding, CA 96003

530-275-4728

Website: www.campshasta.net



Traveling on I-5 Northbound Take exit 682 Oasis Rd. turn right (east) on Oasis Rd. 3.5mi Turn right (east) on Bear Mountain Rd 3.5mi the RV Park is on the left. Traveling on I-5 Southbound Take exit 687 Mountain Gate/Wonderland Rd. Turn Left (east) on Old Oregon Trl Rd. 3.2mi Turn left (east) on Bear Mountain Rd 3.5mi the RV Park is on the left. We DO NOT suggest that you use GPS or mapping sites in this area. If you wish to use GPS or mapping sites be sure route matches our directions above.

• RV Sites • Tent sites • Cabins • Swimming Pool Open Seasonally (May-Sept.) • Seasonal (winter) creek • Horseshoe pits • Ping-Pong table • Small Playground • Hiking trail • Restrooms w/ flush toilets • Security gates • Hot Showers(\$) • Laundry room(\$) • RV Dump station(\$)



Must present All American RV Parks membership card for discount: • 50% off regular rate, rate is good for (28) days • 25% off regular rate for rental units

Castaic Lake RV Resort

31540 Ridge Route Rd

Castaic, CA 91384

877-450-3340 • 661-257-3340

Email: castaicrvprk@earthlink.net

Website: www.campingfriend.com/CastaicLakeRVPark/default.asp?file=Home



North Directions: Exit I-5 at Parker Road, Right 1000 feet. South Directions: Exit I-5 at Lake Hughes Road, left to Parker Road (second stop sign, left 1500 feet)

• Full hookups & Pull-thru available • Laundry • Convenience store • 50 amp available • Propane • Internet access • Cable TV hookup • Dump station • Pool & Spa • Playground and Family Park • Pets Welcome



Must present All American RV Parks membership card for discount: • 50% off regular rate, rate is good for (2) days, Sunday through Thursday • Additional days 15% off regular rate • Not valid on holidays

Ciudad Del Rey
50620 Mesa Verde Road
PO Box 633
King City, CA 93930
831-385-4828



Heading north or south on Highway 101, exit Wildhorse Rd, campground is on West side of Highway.

• 50 Amp Service • Full Hookups • Pull Thrus • Playground • Laundry • Satellite TV • Swimming Pool • Store



Must present All American RV Parks membership card for discount: • Two night stay required - 50% off regular rate second night, First night at regular rate • Credit cards OK • Weekends and Holidays OK • Call ahead for Pull Through Space (no guarantee) • Showers are coin operated

Diamond Jack's RV Ranch
15724 Lyons Valley Road
Jamul, CA 91935
619-669-0099
Email: mail@djrvranch.com



FROM San Diego: Take Highway 94 East. Turn left on Lyons Valley Road. Lyons Valley Road turns into Skyline Truck Trail at the stop sign (1.5 mi.). Go 2.2 miles and turn right on Lawson Valley Road. Go .2 miles and turn left at Lyons Valley Road. Go .9 miles and turn left at the Diamond Jack's sign. FROM Hwy. 8, East of San Diego (Arizona, San Diego Mountains): Exit Japatul Road and turn left. Go 5.5 miles and turn left on Lyons Valley Road. Go 7.5 miles and turn right on Skyline Truck Trail. Go 4.7 miles and turn left on Lawson Valley Road. Go .2 miles and turn left on Lyons Valley Road. Go .9 miles and turn left at the Diamond Jack's sign.

• Swimming Pool • Showers • Dump Station • Pull Throughs • Peaceful rural setting



Must present All American RV Parks membership card for discount: • Discount is 50% off regular rate • Rate is good for four (4) days • See Management for discounts on longer stays • No credit cards • Holidays by reservation only • See management for discounts on longer stays

Dutch Flat RV Resort

55 Canyon Creek Road

Gold Run, CA 95717

530-389-8924

Email: info@dutchflatrvresort.comWebsite: www.dutchflatrvresort.com

Please use the following directions and see map; GPS may not accurately locate us. Take the Dutch Flat Exit #145 off I-80. If you are east bound, then turn right. If you are westbound, then turn left and go to south side of freeway. Go through parking lot of gas station to enter Dutch Flat RV Resort.

• 30 Amp Service • Full Hook Ups • Pull Thrus • Club House • Hiking • Fishing • Pets Welcome • Dump Station • Swimming Pool • Free WiFi • ATV Friendly



Must present All American RV Parks membership card for discount: • 50% off regular rate, 14 day maximum • \$3 electric surcharge

Kelly's Family Kampground

8220 Scotts Valley Road

Upper Lake, CA 95485

707-263-5754



FROM I-5 at Williams, take Hwy 20 west to Upper Lake, continue 5 miles to Scotts Valley Rd. and turn left. From 101 Hwy, take Hwy 20 east 13 miles to Scotts Valley Rd, turn right. Kampground is 1.5 miles on the left.

• 20/30 Amp Service • Basketball • BBQ • Dump Station • Fire Rings • Fishing • Hiking • Horseshoes • Laundry Facility • Pets welcome • Store • Volleyball • Swimming pond



Must present All American RV Parks membership card for discount: • 50% off regular rate • Rate is good for one (1) day • Credit cards not accepted, cash only • 20/ 30 Amp power, \$7 per day • Holidays excluded • Call for availability. • Located 5 miles from Upper Lake and 10 miles from Lakeport. • Seasonal, April thru October.

Lake Elsinore Marina & RV Resort

32700 Riverside Dr
Lake Elsinore, CA 92530
800-328-6844 • 951-678-1300
Website: www.lakeelsinoremarina.com



FROM I-15, Follow Hwy. 74 west (Central Ave) toward San Juan Capistrano. Turn right at stop sign (Collier Ave.) And left at the next stop sign (Riverside Dr.) Go through stop light at Lakeshore (about 1 mile- at Albertsons) to the prominently-marked entrance of Elsinore Marina & RV Resort (approximately 1.5 miles pass Lake shore Dr).

• Full hook-ups (w/s/e) • 50 amp electric service • Room for multiple slide-outs • "Big Rig" friendly • Cable TV at each site • Phone Hookups available • Picnic Tables • Fire Pit Rental (or bring your own!) • Lakeside Tent Camping • Lakefront RV dry camping • Long-term Sites available • Free Wi-Fi Internet Access • Clean, Modern Restrooms • Hot Showers available • Laundry Facilities • Mailboxes available • Sanitary Dump Station • Propane Filling Station • Fenced RV Storage • Pets Welcome



Must present All American RV Parks membership card for discount: • Stay one night, get your second night ½ off. Rate is good for 180 days.

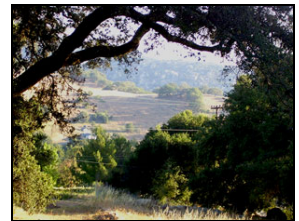
Oak Knoll Campground

31718 S Grade Rd
Pauma Valley, CA 92601
760-742-3437
Email: service@oakknoll.net
Website: www.oakknoll.net



Located 27 miles from Temecula and 21 miles from Escondido. FROM Los Angeles - Hwy 15 S to Hwy 76. E on Hwy 76 - 21 mls to S Grade Rd (S-6) - L at S Grade Rd - Oak Knoll 1st driveway on L. FROM San Diego - Hwy 15 N to Via Rancho Pkwy Ex. Turn R at the top of off ramp (turns into Bear Valley Pkwy). Stay on this road until it comes to T-crossing. This is E Valley Pkwy. Turn R. Stay on this road thru Valley Center and Rincon Indian Res until road comes to T-crossing. This is Hwy 76 (S-6). Turn R, go 5 miles until you see a large green Hwy sign for Palomar Mountain and Lake Henshaw. Below that sign is a brown sign for Oak Knoll CG. Go L at the fork just past signs. Park is on L.

• Family campground with 46 total RV sites, can accommodate RV's up to 35ft • Full and partial hookups • 30-amp, pull-thrus, back-ins • Dump station • Wi-Fi hotspot • Fire rings • Laundry, restrooms, showers • Propane, store & ice • Game room, pool table, Club/Meeting Room • Swimming pool, playground, basketball, horseshoes • Nature watching • Tent sites and more!



Must present All American RV Parks membership card for discount: • 50% off regular rate. Rate is good for 2 days. • Discount is valid for 2 nights and is not valid during Holiday Weekends. • Please ask about discounts on longer stays. • Discount not valid on discounted group rates. • Pets welcome. No dangerous breeds allowed. Limit 2 sm/med dogs per site. • *Rates are for 2 people, additional fee for pets, extra persons and vehicle • Credit cards accepted. • Reservations are required May 15-Sept 15. • Located 27 miles from Temecula and 21 miles from Escondido, near Pala Casino and Hotel, Pauma Casino and Valley View Resort and Casino.

Pyramid Lake RV Resort

45100 Copco Ave
PO Box 45
Gorman, CA 93243
888-557-3097 • 661-248-0100
Email: info@pyramidlakerv.com
Website: www.pyramidlakerv.com



FROM I-5 Northbound: Take Smokey Bear Rd. Exit, turn right (east) to Copco Ave., turn left (north) and follow to end of road (about 1 mile). From I-5 Southbound: Take Smokey Bear Rd. Exit, turn left (east) to Copco Ave., turn left (north) at Copco Ave. and follow to the end (about 1 mile).

• Peak Season: May 1 to October 31 • RV Sites: 117 Full Hook-up • Electrical Amps: 30/50 • Park Models, Cabins, Trailers for Rent • 3 Club Houses / Group Meeting Rooms for up to 150 people • Pool, Mini-Golf, Hot Tub, Billiards • Cable TV, Showers, Restrooms • Laundry, Propane for Sale



Must present All American RV Parks membership card for discount: • 30% off regular rate, rate is good for (3) days, 15% off regular daily rate thereafter.

Santa Fe Park

5707 Santa Fe St
San Diego, CA 92109
800-959-3787 • 858-272-4051
Email: sfp@american-assets.com
Website: www.santafepark.com



Northbound on I-5 exit at Grand/Garnet and continue on Mission Bay. Drive through 4 traffic signals. Turn right on Damon, then left on Santa Fe-1.4 miles to park. Southbound on I-5 exit at Balboa/Garnet- get in the left lane. Make a left on Damon (second traffic light), then go left on Santa Fe Street approximately 1.4 miles.

• Wi-Fi Internet Access • Heated Swimming Pool • Laundry Facility • 30 Amp Service • Clubhouse



Must present All American RV Parks membership card for discount: • 50% off regular rate • Rate is good for two weeks per season • Reservations required

Sleepy Hollow RV Park

30661 US 101

Willits, CA 95490

707-459-0613

Email: sleepy_hollow@hughes.net



8 miles north of Willits, exit Shimmings Ridge Rd. (beginning of four lane highway).

• 30 Amp Service • Pull Thru • Pets Welcome



Must present All American RV Parks membership card for discount: • Rate: 50% off regular rate • Rate is good for three (3) days • See management for longer stays • Cash or checks only, no credit cards accepted • Not valid June, July or August

Goldfield RV Park

411 S 26th St

Colorado Springs, CO 80904

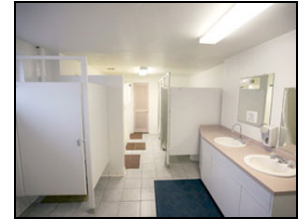
888-471-0495 • 719-471-0495

Website: www.goldfieldrvpark.com



We are located in the West side of Colorado Springs, on the corner of U.S. Highway 24 and 26th Street.

• Level and Clean Sites • WiFi Included • Direct TV Included • Many Shaded Sites • 24-hr Laundry Facility • Clean Restrooms, Including Private Showers & Dressing Rooms • 9 Pull-Through Sites • 30 and 50 Amp Hookups • Sleeping Cabins • Urban Tent Sites • Dump Station • Resident Manager • Pet Friendly



Must present All American RV Parks membership card for discount: • 50% off regular rate • rate is good for unlimited days. 50% discount not given between Memorial Day and Labor Day weekends.

Gunnison Lakeside Resort

28357 US Hwy 50
Gunnison, CO 81230
877-641-0844 • 970-641-0477
Email: info@gunnisonlakeside.com
Website: www.gunnisonlakeside.com



12 miles west of Gunnison on north side of US Highway 50 between mile marker 145 and 146.

- Electric & Sewer Hook-ups • Pure Drinking Water • Shaded Sites and TV Hook-ups • Coin-operated Laundry and Showers • Free WIFI • Propane Sales • Fenced Storage • Well-stocked Convenience Store



Must present All American RV Parks membership card for discount: • Rate 25% off regular rate • Rate is good for 2 days. Cash or check only, no credit cards. Discount Available Sunday - Thursday only. Discounts not available on Holidiays. Rates do not include sales tax. See Management for longer stays.

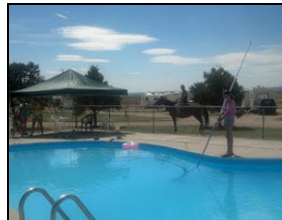
Haggard's RV Campground

7910 W US Hwy 50
Pueblo West, CO 81007
719-547-2101
Email: haggardsrvcampground@gmail.com
Website: www.haggardsrvcampground.com



FROM Pueblo: Take Exit 101 off I-25. Drive 15 miles West on US Hwy 50. We are near milepost marker 298Hagg.

- 80 total RV sites, RVs up to 55' • 30/50 Amp • Full & partial hookups • Pull-Thru sites • Tent sites • Wi-Fi • Restrooms & showers • Laundry facility • Swimming pool • Store



Must present All American RV Parks membership card for discount: • 20% off regular rate • rate is good for 2 days. 10% off regular weekly rate.

Marshall Ash Village
818 Colorado Ave
Stratton, CO 80836
719-348-5141



FROM Jct of I-70 & Exit 419, N 0.1 mi on exit rd (L).

• 33 RV sites, RVs up to 40' • 30/50amp • Water, Sewer • Free showers • Laundry • Wi-Fi • Pull-Thru Sites • Big Rig Access • Pets Allowed • Tents Allowed • Family Friendly



Must present All American RV Parks membership card for discount: • 25% off regular rate • rate is good for 3 days.

Shady Grove Campground

306 Colorado Avenue
Seibert, CO 80834
970-664-2218

Email: shadygroverv@outlook.com

Website: www.shadygroverv.com



Located 130 miles east of Denver, 120 miles east of Colorado Springs, and 45 miles west of the Kansas border. Only 4 ½ blocks North of I-70. Take exit 405 on I-70, go North 1 block on Hwy 59, turn Right for 3 blocks.

• Free Private Restrooms • 2 Full Laundry Mats • Free TV • Basketball Court • Store (1.5 blocks away) • Post Office (1 block away) • Hardware Store (2 blocks away) • Liquor Store (2 blocks away) • Beauty Shop (1.5 blocks away)



Must present All American RV Parks membership card for discount: • 50% off regular rate, rate is good for all days. • Please call for reservations in July and August.

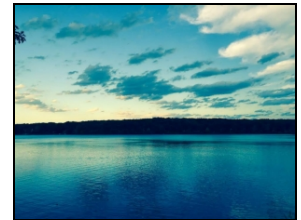
Lake Williams Campground
1742 Exeter Rd
Lebanon, CT 06249-1900
800.972.0020 • 860.642.7761
Email: akewilliamscampgd@lwcg.net
Website: www.lakewilliamscampground.net



From Hartford Area: Take 84 East to Exit 55 (rt.2), Follow Rt. 2 Until Exit 13, Getting off Rt. 2 (Exit 13), Take a left off the exit (CT-66 East), After about 5 miles, turn right (CT 85 South), After about 2 miles, turn left (CT 207 East), After about 2 miles, Lake Williams Campground will be on your left.

From New York, New Haven, Bridgeport Area: Take Rt. 95 North to New Haven, Take Rt. 91 North, After about 32 miles take Exit 25 towards Glastonbury (leads you to Rt.3 North), On Route 3 north take the second exit for Rt. 2, Take Rt. 2 to exit 13, Getting off Rt. 2 (Exit 13), Take a left off the exit (CT-66 East), After about 5 miles, turn right (CT 85 South), After about 2 miles, turn left (CT 207 East), After about 2 miles, Lake Williams Campground will be on your left.

• Beach swimming area • Doggy Swimming area • boat rentals • seasonal boat dock rentals • Horseshoe Pit • Ping Pong and Pool Tables • Recreation Hall and Playground • Camp Store • Restrooms with Shower Facilities • Laundromat • Activity Game Room • Playground • Cable T.V. • Dumping Station • Walking • Biking Trails • horseback riding nearby • Tent Sites Available • \$2.00 per night for 50AMP



Must present All American RV Parks membership card for discount: • Rate 50% off regular rate • Rate is good for 180 days - until Columbus Day 2016 (October 10th 2016)

Nelson's Family Campground
71 Mott Hill Road
East Hampton, CT 06424
866-445-6520 • 860-267-5300
Email: nelsonsfamilycampground@msn.com
Website: www.nelsonscampground.com



FROM New Haven or New York: Take I-91 North to Exit 22. Go South on Route 9 to stop light. Turn right onto Route 66 East. Follow Route 66 East into East Hampton. Turn left onto North Main St.-Lake Road Follow for 1 1/2 miles and turn left onto Mott Hill Rd. we are 1/2 mile up on the left hand side. FROM Hartford (south) or New London (North): Take Route 2 to exit 13. Turn onto Route 66 West (from Hartford turn right/from New London turn left) and follow to East Hampton. Turn right onto North Main Street. Go 1 1/2 miles North on North Main St.- Lake Road to Mott Hill Rd. Take a left onto Mott Hill Rd and we are 1/2 miles up on the left. FROM Waterbury: Take I-84 East to exit 27. follow Route 691 to Route 66 East to East Hampton. Go 1 1/2 miles North on North Main St.- Lake Road to Mott Hill Rd. Take a left onto Mott Hill Rd and we are 1/2 miles up on the left.

• 300 RV sites that can accommodate RVs up to 40' • Sites includes water, electric, and Cable • Hot Showers, Picnic Tables, Fireplaces, Firewood & Ice Sales Camp Store, Laundromat, Emergency Phone • Dumping Station, Mobile Sanitation Service • Traffic Control Gates Themed Weekends with Scheduled Activities • Group or Club areas, Playscape • 60' Swimming Pool, Snack Bar, Recreation Hall, Ticket Redemption Games, Pool Tables • Horseshoes, Shuffleboard, Basketball, Volleyball, Softball, Soccer Field • Boating Nearby (540 acre lake located 1/4 mile away) Mini Golf, Hiking, Fishing, Bingo • Pets allowed (on leash)



Must present All American RV Parks membership card for discount: • 50% off regular rate. Rate is good for 5 days, Sunday through Thursday nights only.

Wolf's Den Family Campground

256 Town St
East Haddam, CT 06423
860-873-9681

Email: wolfsdencamp@msn.com
Website: www.wolfsdencampground.com



FROM New York (north) or Rhode Island (south): I - 95 to Route 9 North. Route 9 North to Exit 7, East on Route 82. Four miles on left. FROM Hartford (south) or Old Saybrook (north): Route 9 to Exit 7. East on Route 82. Four miles on left. FROM Massachusetts: I - 91 South to Route 9 south to Exit 7. East on Route 82. Four Miles.

• Flush Toilets, Hot Showers • Picnic Tables • Fireplaces, Firewood & Ice Sales Camp Store • Laundromat, Emergency Phone • Dumping Station, Mobile Sanitation Service, Traffic Control Gates • Pavilion • On-site RV Sales & Service • Olympic Size Swimming Pool • Fishing Pond • Recreation Hall with Arcade, Playground, Horseshoes, Miniature Golf, Basketball, Shuffleboard • Wi-Fi Hot Spots • Themed Weekends with Scheduled Activities, Group or Club areas • Volleyball, Mini Golf, Hiking, Bingo, Cable TV • Pets allowed (on leash)



Must present All American RV Parks membership card for discount: • 50% off regular rate. Rate is good for 5 days, Sunday through Thursday nights only.

Aqua Isles

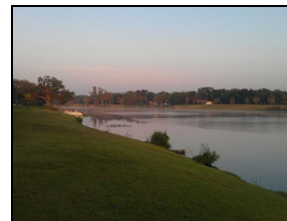
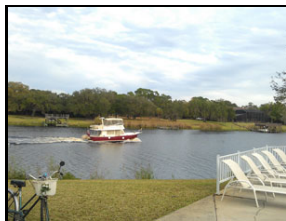
900 Aqua Isles Blvd
La Belle, FL 33935
863-675-2331

Email: aquaisles@gmail.com
Website: www.aquaislesrv.com



FROM I-75, Exit 141 toward La Belle/Eden Winery. Drive 23.7 miles then take a LEFT onto Shady Oaks Ln. Drive 0.08 mile. Turn LEFT onto Shady Oaks Ave. Go 0.1 mile and take the 1st RIGHT onto Aqua Isles Blvd.

• 70 total RV sites • Full hookups w/ 30/50 amp • Wi-Fi • Cable TV • Restrooms, showers & laundry facilities • Heated indoor pool • Boat ramp, boating, canoeing • Chapel service • Clubhouse, BBQ, fire rings, horseshoes, picnic area, and shuffleboard • Fishing • Crafts room • Fitness center and Game room • Handicap accessible • Recycling • Security • Many seasonal activities from Oct-Mar • Located 30 miles from Ft. Myers and 32 miles from Clewiston



Must present All American RV Parks membership card for discount: • 50% off regular rate. Rate is good for 1 day. • Adult RV Park

Ben's Hitching Post Campground

2440 NE 115th Ave
Silver Springs, FL 34488
352-625-4213

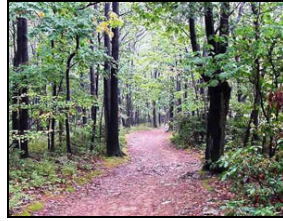
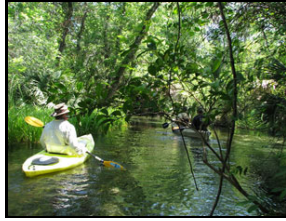
Email: benshp@embarqmail.com

Website: www.benshitchingpost.com



FROM I-75 take exit 352 (SR 40). Go east on SR40 (turns in to Silver Springs Blvd.) for app. 15 miles. Go over the Ocklawaha River Bridge, go through the last intersection (CR314) 1/2 mile past take the first road to the right (NE 115th. Ave. also named Piney Path) go app. 300 yards and park is located on the right.

• 47 total RV sites, can accommodate RVs up to 40 ft • Full hookups, 30-amp, pull-thru and back-in sites • Wi-Fi • Restrooms and showers • Laundry facilities • Swimming pool, shuffleboard, propane, clubhouse • Groups welcome! • Area attractions: Ocala National Forest, Florida Horse Park, Silver Springs, and Appleton Museum



Must present All American RV Parks membership card for discount: • 50% off regular rate. Rate is good for 2 days. • Discount is valid for two nights. Please see management for discounts on longer stays. • Discount is not valid on discounted group rates. • *Rates are for two people, \$3.00 for each additional person. • Reservations are required October through March 31st. • Located 10 miles from Ocala and 65 miles from Daytona.

Florilow Oaks MH & RV Park

4272 S US Hwy 301
Bushnell, FL 33513-3602
352-793-6487

Email: info@florilow.com

Website: www.florilow.com



On I-75, take Exit 314. Go East on 48. Go through 3 traffic lights and cross over the railroad tracks to the stop sign. Turn left (North) on US 301. We are approximately 2 miles North on left hand side of road.

• 26 total RV sites • Accommodate RVs up to 36', all FHU, water, sewer, pull-thrus and back-ins • 30/50 Amp • Free Wi-Fi • Cable TV (\$) • Restrooms, showers & laundry • Dump station • Recreation hall, Wii gaming console available for your enjoyment and exercise: Library • Horseshoes • Pavilion • Shuffleboard • Bird watchers paradise • Pot lucks, crafts, games, cards • Black-topped roads throughout the park for biking or walking



Must present All American RV Parks membership card for discount: • 50% off regular rate. Rate is good for 2 days. • *Rates are based on 2 people, additional \$3 for each extra person per day.

Goethe Trailhead Ranch

9171 SE County Road 337

Dunnellon, FL 34431

352-489-8545

Email: info@ocalatrailsrcamping.com

Website: www.ocalatrailsrcamping.com



FROM I-75, go to Exit 341 to Hwy 484 to Dunnellon. Go through the traffic light at Hwy. 41 and Hwy 484. Turn right at the stop sign onto Hwy 40 west, and go approximately 5+ miles. Turn right onto Hwy 336, go approx. 5+ miles, and turn right onto County Road 337. Then go approx. 5+ miles and turn right into the entrance of Goethe Trailhead Ranch.

• 73 total RV sites • Accommodates RV's up to 60ft. • Full hookups • 20/30/50 amp service • Wi-Fi • Showers and restrooms • Exercise-Room • Swimming Pool • Pavilion • Horseshoes, playground, basketball, volleyball & badminton • 96 horse stalls, arena, horse paddocks, and more • Adjacent to Goethe State Forest Apex Trailhead providing direct access to over 120 miles of lush Florida forest trails for your riding, hiking, biking, and bird watching pleasure • Located 15 miles from Dunnellon and 30 miles from Ocala



Must present All American RV Parks membership card for discount: • 50% off regular rate. Rate is good for 2 days minimum • Discount is valid Tuesday through Thursday nights, it is not valid during holidays • No campfires at site • Pets welcome and must be on leash • Minimum 2 days at \$16/night or one week is \$99 • Rates are for two adults

International RV Park & Campground

3715 W International Speedway Blvd

Daytona, FL 32124

386-239-0249 • 866-261-3698

Email: pygu2@aol.com

Website: www.internationalrvdaytona.com



FROM I-95 to Daytona Beach: take Exit 261 (US 92) and turn west (left) and go 1.3 miles. Park is on the left. I-4 to Daytona Beach: take Exit 129 east on 92 1.3 miles. Park is on right.

• 90' Paved pull-thrus • Full hookups with 30 & 50 amp service • Free WiFi • Showers and Laundry • Clubhouse • Store • 2 Fishing Ponds • Cable • Paved sites • Concrete patios • Dump station • Secure storage • Pet friendly



Must present All American RV Parks membership card for discount: • 50% off regular rate. Rate is good for open days. Offer not valid during all local special events: Raceweek (Feb), Bikeweeek (March), 4th of July Race (3 days) and Biketober Fest (3 days). Rates during events are higher, \$3.00 additional for electricity.

Ja-Mar Travel Park

11203 US Hwy 19 North
Port Richey, FL 34668
727-863-2040

Email: Jamartravelparks@aol.com

Website: www.ja-mar-travelpark.com



FROM the NORTH: I-75 S, Take the SR-52 exit, EXIT 285, RIGHT onto FL-52 W. for 24.4 miles, LEFT onto US-19 S. for .8 Miles. From the SOUTH: I-75 N to I-275 N to GANDY BLVD N/FL-694 W for 2 miles to US-19 N for 35 miles.

• 50 Amp Service • Full Hook Ups • Club House • Heated Swimming Pool • Shuffleboard • Horseshoes • Pavilion • Paved Roads • Shade Trees • Numerous Planned Activities



Must present All American RV Parks membership card for discount: • 50% off regular rate, minimum stay one week • Units over 35' must be approved

Lettuce Lake RV Resort

8644 SW Reese St
Arcadia, FL 34269-4477
863-494-6057

Email: lltr@lltr.comcastbiz.net

Website: www.lettucelaketrvresort.com



South exit towards Tampa, exit 296A. Merge on I-75 South. Take the CR-769 exit toward Arcadia, exit 170, turn left on CR-769 North. Make a hard right turn on CR-761. Turn right on Lettuce continue on SW Reese St.

• 250 total RV sites • 30/50 amp service • Sewer • Water • Accommodates RV's up to 40ft • WiFi • Restrooms • Laundry • Swimming pool • Clubhouse • Shuffleboard, biking, boating, canoeing, fishing, bean bag tossing, horseshoes, beach outings • Ice • Propane • Classes in exercise, line dancing, crochet, wood carving, quilting • Weekly and Monthly rates available.



Must present All American RV Parks membership card for discount: • 50% off regular rate. Rate is good for 2 days. • Discount is not valid during January, February, and March or on major holidays • Discount applies only to daily rate • No tents or campfires • Reservations are suggested in season. • Check in time is 1 PM • Cash or Checks only. No credit cards. • Pets welcome • *Rates are for two people, \$3.00 for each additional person per day

Natures Resort RV Park
10359 W Halls River Rd
Homosassa, FL 34448
352-628-9544 • 800-301-7880
Website: www.naturesresortfla.com



Traveling south on US19/98 in Homosassa, turn right (west) on W. Halls River Road (at Hardee□s). Traveling north on US 19/98, turn left on W. Halls River Road. Travel 1.9 miles to Resort Entrance on right.

• Waterfront park with 305 total RV sites • Full hookup shaded RV sites • 30/50 amp service/Concrete patio with picnic table • Marina Lounge • WiFi, cable • Heated pool • Game room recreation hall • Chapel • General store • Clean restrooms • Dump station • Laundromat • Workout room • Fishing, boat launch, boat rentals, boating, canoeing & volleyball • Manatee Lookout • Propane • Playground • Recycling • Great restaurants close by



Must present All American RV Parks membership card for discount: • 50% off regular rate • Rate is good for 1 night (Monday - Thursday) • Not valid for cabin rental

Orbit RV Park
3860 US Hwy 1
Grant, FL 32949
321-953-2555
Email: info@orbitrv.com
Website: www.orbitrv.com



FROM I - 95 to Exit 173 (old Exit 70) Malabar, and go east to US Hwy 1. Then turn right onto US Hwy. 1 and go south 3.5 miles. Park is on the right side.

• 38 full hookup RV sites • 20/30/50 amp services available • Indian River front with fishing dock • Wi-Fi • Quiet, clean, flat & grassy • Some sites are shaded, all have patios and picnic table • Free hot showers • Laundry • Cable TV • Exercise room, clubhouse, picnic area • Public boat launch nearby, paved streets • Walk next door to the Liar's Pub for a sandwich or a cold beverage



Must present All American RV Parks membership card for discount: • 50% off regular rate. Rate is good for 3 days • Discount is valid for 3 days, please see management for discount available on longer stays • Discount is valid from May 1st through September 30th • Pets accepted, but size and breed restrictions apply • Pets must be on a leash and be cleaned up after • *Rates and Season Dates are subject to change • Rates are for 2 people, \$2.00 additional charge per day for each extra person • \$3.00 additional charge per night for 50 amp service

Outdoor Resorts at Orlando

9000 Irlo Bronson Memorial Hwy (US Hwy 192)
Clermont, FL 34714
863-424-1407 • 800-531-3033
Email: reserve@oro-orlando.com
Website: www.rentwithoro.com



We are located just 6 miles from Disney and close to all attractions! Easy access from Florida's Turnpike or I-4. **Turnpike From N:** Exit #289, head south on 27 then east on 192, 1 mile on right. **I-4 from N:** Exit #64B, west on 192, 6 miles on left. **I-4 from S:** Exit #55 to 27N for 7 miles, then east on 192, 1 mile on right.

• 979 total/40+ rental RV sites • Full hook-up, 30 & 50 amps • 9-holes, par 3 executive golf course • Two-story, fully equipped Club House • Two heated swimming pools • Kiddie pool & children's playground • Miniature golf & lighted tennis courts • Shuffleboard • Boat ramp, boat, jet ski or fish on Lake Davenport • Basketball, volleyball, horseshoes & pickle ball • Cable TV & Wireless Internet • Planned activities & entertainment • Laundry & Mail service • Propane filling stations for RVs and grilling tanks



Must present All American RV Parks membership card for discount: • 50% off regular rate. Rate is good for 7 days. • Discount is available May 1st through Oct 31st. • No camp fires or tents. • No RV entry into the park after 10pm. • Restriction of one pet (no dangerous breeds). • Rate plus tax and \$3.50 charger per night for electricity.

Red Oaks Carefree RV Resort

5551 SW 18th Terrace
Bushnell, FL 33513
352-793-7117
Email: redoaks@carefreervresorts.com
Website: www.carefreervresorts.com



TAKE I-75 to Exit 314, Turn East on Hwy 48, park is on the left.

• 367 sites can accommodate RV's up to 50' • Full hookups, 30amp & 50amp • 2 shower houses • Fishing pond • Wi-Fi Access • Cable available • Heated Pool • Hot Tub • Horseshoes, Bocce, Shuffleboard, Billiards, Karaoke, Bingo, Aqua Aerobics • Laundry facilities • Clubhouse • Pet Area • Entertainment & Activities Seasonally • Centrally located.



Must present All American RV Parks membership card for discount: • 50% off regular rate. Rate is good for 5 days, weekly and monthly discounts may be available.

The Boardwalk RV Resort

100 NE 6th Ave
Homestead, FL 33030
305-248-2487

Email: boardwalkrv@gmail.com

Website: www.boardwalkrv.com



FROM the FL turnpike southbound: Take Exit 2/Campbell Drive. Turn left a bottom of ramp. Go Approx. 2 miles and turn left onto US1 (S. Dixie Hwy). Go south on Dixie Hwy and turn left on NE 6th Ave. Our gate will be on the left. The gate code is 9255.

• A family RV and manufactured home community with 137 total RV sites, can accommodate any size RV • Full hookups, 30/50 amp service • WiFi • Restrooms & Showers • Laundry • BBQ area, Picnic tables, Playground • Fitness room, Clubhouse with Billiard Room • Heated pool • Volleyball, Shuffleboard, Pentanque, Horseshoe pits • Gated Facility with Night Security Patrol.



Must present All American RV Parks membership card for discount: • 50% off regular rate. Rate is good for 10 days. • Discount not valid December 1st thru April 30th. • Located .2 mile from Homestead and 25 miles from Miami.

The Old Pavilion RV Park

20771 Keaton Beach Dr
Keaton, FL 32348
850-578-2484

Email: laibejeris@gtcom.net

Website: www.oldpavilionrvpark.com



Keaton Beach is located 72 miles south of Tallahassee and 80 miles Northwest of Gainesville. Take Hwy. 19/27 to C.R. 361, and then go 17 miles to the beach and RV Park. Scenic Coastal Loop on C.R. 361- located on the Gulf.

• 36 large sites, with 30/50 amp service & full hookups • Wireless Internet available • Verizon Cell Service in the area • Handicap access bathhouse • Boat ramp and boat dockage. • Full service marina located across the street. • A small beach 2 blocks away with a restaurant, and 700' fishing pier.



Must present All American RV Parks membership card for discount: • 50% off regular rate. Rate is good for 7 days. • Discount is not valid June, July, August and during holidays and holiday weekends, year-round. • Check or cash only. • Pets welcome, must be leashed and cleaned up after. • Rates are subject to change, and based on 2 people, \$5 per night per person for each additional person. • Located 20 miles south of Perry and 17 miles north of Steinhatchee.

Woodsmoke Camping Resort

19551 US 41 S
Ft Myers, FL 33908
239-267-3456

Email: woodsmokeresort@gmail.com

Website: www.woodsmokecampingresort.com



FROM NORTH: Take I-75 South to exit 123 (Corkscrew Road). West on Corkscrew Road to US 41. North on US 41 for 2 miles. Woodsmoke is on East side of Road. FROM SOUTH: Take I-75 North to exit 123 (Corkscrew Road). West on Corkscrew Road to US 41. North on US 41 for 2 miles. Woodsmoke is on East side of Road.

• Giant heated pool • Jacuzzi • Large club house • Bathhouses • Fitness Center • Laundromats • Boardwalk / Nature trail • Dogwalks • Two lakes with fishing • Horse shoes • Playground • Billiards • Shuffleboard • WI-FI • 75-80 foot concrete pull-thrus • Full hook-up 30-50 amp sites



Must present All American RV Parks membership card for discount: • 50% off regular rate. Rate is good for 6 days, excluding January, February and March.

A Big Wheel RV Park

6031 Charlie Smith Sr Hwy
St Marys, GA 31558
912-576-5386

Email: karen@abigwheelrvpark.com

Website: www.abigwheelrvpark.com



FROM Exit 3 - Come off Exit 3 to the light. Turn left on Hwy 40, go down about two miles to Kings Bay Rd (you'll see Walgreens/WalMart on the corners). Turn left and go to the end of the road. Turn left at the light onto Charlie Smith Sr Hwy at the light.(Spur 40) Go through the next light, and down the road approximately 3 miles - we are on the left.

• 35 total RV sites can accommodate RVs up to 42'. 30/50 amp service • Full hookups • Hot showers, restrooms • 24 pull through sites, back ins, concrete pads • Laundry room with 3 washers and dryers • Cable and WiFi available in activity room • Handicap accessible • LP propane available at entrance of park, ice • Picnic tables, fire rings • Fishing, Catch and Release Pond on premises • RV storage



Must present All American RV Parks membership card for discount: • 50% off regular rate. Rate is good for one day. • Reservations allowed on stays of two nights or more. • Pets are welcome. • *Plus tax. Rates are for two people, \$2.00 additional charge for each extra person per night. • \$5.00 additional for 50AMP service per night. • The park accepts cash only.

Al Sihah Shrine RV Park

222 Mecca Dr
Macon, GA 31206
478.785.5900 • 478.785.9019
Email: alsihah@gmail.com
Website: www.alsihahshriners.com



Going south on I-75 take 160B. Turn right, crossover Pio Nono and proceed straight ahead on Rocky Creek Rd approximately 7/10 of a mile. Turn left on Jennifer, go approximately 2/10 of a mile and turn left on Mecca. Enter at gate turning left into park. On I-75 heading north, take exit 160 turn left on Pio Nono, go to traffic light and left on Rocky Creek Rd. Go approximately 7/10 of a mile and turn left onto Jennifer, go approximately 2/10 of a mile and turn right on Mecca. Come to gate & turn left into entrance to park.

• 105 RV sites • 27 full hookups • 50amp • remaining sites have water and electric 30/50 amp. • Wi-Fi • restrooms • 2 open pavilions • several dump stations • Back in and pull through sites • water and electric sites • fishing lake • picnic tables • BBQ • clubhouse • Biking • fishing • handicap access • nature watching • security gated community



Must present All American RV Parks membership card for discount: • 50% off regular rate • Rate is good for All days (except for our annual Blue Grass Festival in May (3rd week))

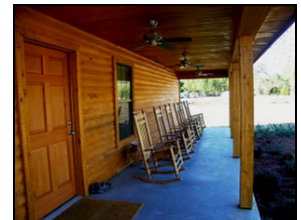
Cain's CreekSide RV Park

6143 US Hwy 41 N
Hahira, GA 31632
229-794-9416 • 229-794-3671
Email: rvcain@windstream.net
Website: www.creeksidervpark.yolasite.com



Located 1 mile from Hahira and 10 miles from Valdosta. Exit Interstate 75 (I-75) at Exit 29. From the I-75 ramp head east on Highway 122, 1 mile to the red light. Then turn left heading north on Highway 41 for 1 mile and we will be on your left. We are exactly 2 miles from I-75.

• Big Rig Friendly! 30 total RV sites, most sites are 100' long x 40' wide with 25' wide interior gravel road with a 100' radius cul-de-sac • 20/30/50 amp hook-ups, full hookups • 10 pull-thrus, 20 back-ins • FREE Wi-Fi • FREE TV antenna connections at 6 sites • Water • Rocking chairs across the front porch of the office for your enjoyment and relaxation • Registration room • Rest room, showers & laundry • Hiking, nature watching, picnic tables, fire rings, grills, stocked 2.5 acre fishing pond • Handicap access and no smoking • We have 30 beautiful ducks! You may watch and feed if you wish.



Must present All American RV Parks membership card for discount: • 50% off regular rate. Rate is good for 7 days. • Office hours: 9AM-8PM. If we happen to be out for dinner when you arrive, feel free to park on any vacant site of your choice. • Call (229) 794-3671 after 6pm • Pets welcome. • Credit cards accepted. • *Rates are for 2 people, \$4.00 for each additional person. Taxes included.

Feathered Camp'n Acres

316 Aonia Rd
Washington, GA 30673
706-678-6791

Email: donna.cram@yahoo.com

Website: www.featheredcampn acres.com



Aonia Road is located at Ebenezer Church at mile marker 24 on Rt 78. On Rt 378 it is between mile marker 17&18. From I-20, take Exit 172 and go north 17 miles to Aonia Community to Aonia Rd on right. Follow Aonia Road to 316 on the right.

• 7 total RV sites, that can accommodate most campers • Large sites, full hookups • Back-ins, 4 pull-thrus • 30amp service, well water with fill stations • Fire rings • Dump station and septic • Yearly and seasonal sites for rent • Hunting, fishing and boating abound here



Must present All American RV Parks membership card for discount: • 50% off regular rate. Rate is good for unlimited number of days. • Call ahead reservations available. • Pets are welcome, and must be under control at all times for the safety of pets as well as wildlife. • Nearby is Thomson, Lincolnton, Elberton, Lexington, Greensboro, Augusta. Wilkes County, Washington is near South Carolina, North Carolina and Tennessee.

Happy Campers RV Park

1125 Kelly Dr #76
Hinesville, GA 31313
912.876.6881

Email: mrhappyacres@gmail.com

Website: happycampersga.com



From I-95, exit #87, Richmond Hill, turn left at the bottom of the exit ramp. Continue South on US-17 for 4.6 miles, turn right onto 196 West, 8.8 miles, to Highway 84 for 6.8 miles to Veteran's Parkway. Turn right on Veteran's Parkway and continue for two miles to South Main Street. Turn left and follow to Barry McCarthy Blvd, turn right and continue to Kelly Drive for two miles to the RV Park.

• 25 large RV sites • Full Hookups • pull in or back in spaces • extra large 30x70 spaces • 20/30/50 amp electrical hook ups • water • sewer • trash pick up • Free Wi-Fi • Picnic Tables • Laundry facilities



Must present All American RV Parks membership card for discount: • 50% off regular rate • Rate is good for 7 days

Lake Pines RV Park & Campground

6404 Garrett Rd
Columbus, GA 31820
706-561-9675

Email: info@lakepines.net
Website: www.lakepines.net



ATTN: If using GPS system, please use the following address: 6404 Garrett Rd, Midland, GA 31820. Park is located on the corner of US-80 and Garrett Rd, 8 miles east of I-185.

• 100 total RV sites, can accommodate RV's 70+ft • 20 pull-thrus, back-ins • 30/50+ amp • Dump station • Full hookups, 10 partial hookups • Tent sites • FREE Wi-Fi • Restrooms, showers & laundry • Picnic area, playground, horseshoe pits • Pool & Group meeting room • Propane & RV storage • Hiking and walking trails • Minutes from Ft Benning & downtown Columbus



Must present All American RV Parks membership card for discount: • 50% off regular rate. Rate is good for 1 day. • Discount is not valid for special events or rallies.

Leisure Time RV Park

881 Poplar Springs Rd
Adairsville, GA 30103

Email: rolandeboucher@yahoo.com
Website: leisuretimervpark.net



I-75 in Georgia, exit 306. Go West thru traffic light at Hardees. Turn left onto Poplar Springs Road, second campground on the right.

• pull-thru and back-up sites • full hook-up • 62 channels of Comcast cable TV • free Wifi • Leisure Time Club House/Office • 50 Amp Service • 30 Amp Adapters available • restrooms/showers • Laundry facilities • Coke Machine • Snacks • Pet Walking Area • Picnic Area • Club House



Must present All American RV Parks membership card for discount: • 50% off regular rate • Rate is good for 5 days • \$2 for electric

Moultrie RV Park
125 Edmondson Rd
Moultrie, GA 31788
229-873-4258 • 229-456-2452
Email: lisamizellweaver@yahoo.com



FROM Moultrie Bypass (319), take 133 South toward Valdosta. When the four-lane ends to two-lane, turn left on Edmondson Road. Turn left again into RV park. The Park is located in the back of drive.

- Moultrie RV Park has 45 RV sites that can accommodate any size RV • 20/30/50 amp service • Full hookups, long pull-throughs, back-ins, level site • Laundry • Water & sewer • Wireless internet • Fire rings, playground, picnic tables brand new • Biking • Propane for sale • Pets are welcome • Horses welcome • RV storage



Must present All American RV Parks membership card for discount: • 50% off regular rate. Rate is good for 2 days. • Discount is not valid during special events, Expo Car Show, and Arts & Crafts Festival. • You may call or text the two phone numbers listed. • Tent camping is not available. • Monthly rates are available, please call for detailed information! • 40 miles from Valdosta, GA and 50 miles from Albany, GA.

Mountain View RV Resort

136 Mountain Creek Rd
Blairsville, GA 30512
706-835-1111
Email: mtnviewmgr@hotmail.com
Website: www.georgiamtnviewrvresort.com



FROM Atlanta: I-75N to I-575N - becomes GA 515. Follow past Blue Ridge to Blairsville. Turn right onto Kiutuestia Creek Rd for 1.3 miles, then left onto Blue Ridge Hwy for 0.5 mi, then right on Mountain Creek Rd to entrance. FROM Hiawassee: Take US 76 N/GA 2 through Blairsville. Turn left onto Blue Ridge Rd just past traffic light at junction Murphy Hwy US 129/19. Go 2.4 mi, turn left onto Mountain Creek Rd.

- Resort has 40 total RV sites, can accommodate any size RV • Big Rig and motorcycle friendly • 30/50 Amp • All full hookups E/W/S • Mostly back-in sites • Concrete pads • Wireless internet available • Pool, Jacuzzi, putting/ and chipping green, bicycle riding, and lighted tennis courts



Must present All American RV Parks membership card for discount: • 50% off regular rate. Discount is valid for two nights. • Discount is not valid on holidays and during the month of October. • Please call to check availability and or inquire about special weekly and monthly rates. • Discount cannot be combined with any other offer. • Pets welcome. • Located 20 miles from Hiawassee and Blue Ridge.

Paradise Lake RV Park
20 Whitley Rd Lot 6
PO Box 186
Brookfield, GA 31727
229-388-3481 • 229-386-8854
Email: jndcope@mchsi.com



FROM I-75, Exit #62 (Tifton/US82), and go east on US 82 for 9 miles. Paradise Lake RV Park is located on the south corner of US 82 and Whitley Road (look for signs).

• 30 total RV sites with full hookups, can accommodate RV's up to 50 ft • 30/50 amp service, pull- through sites • Large lots 60 ft wide -60 ft long • Ice • Monthly RV sites are available • Restrooms & showers • Dump station • Large lots 60' wide by 60' long • Open air pavilion • Only 1 mile to Paradise Public Fishing all year-round • Camper storage available



Must present All American RV Parks membership card for discount: • 50% off regular rate. Rate is good for 3 days. • Pets must be leashed and cleaned up after. • Located 40 miles from Valdosta and 200 miles from Atlanta, GA Agrirama Agriculture Museum from 1890's. • 9 miles from Tifton with shopping, restaurants, movie theatre, and Love Affair Festival the 1st week in May.

Southern Trails Resort

2690 Arena Rd
Unadilla, GA 31091
478.627.3254
Email: sttrails@windstream.net
Website: www.southerntrailsresort.com



Located right off exit 121 of I-75.

• 191 RV Sites and can accommodate RV's up to 45 feet • Basketball • Horseshoes • Chapel Service • Fishing Pond for catch and release • Weekly activities that including Bingo, Bowling and Card games



Must present All American RV Parks membership card for discount: • 50% off regular rate • Rate is good for 2 days

Towns Bluff Park & Heritage Center

45 River Park Rd

PO Box 609

Hazlehurst, GA 31539

912-379-9303

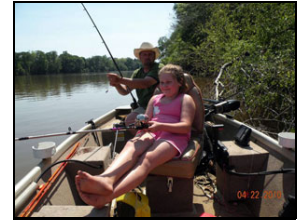
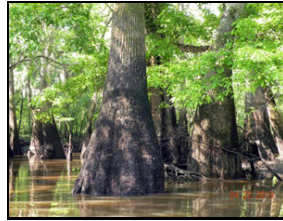
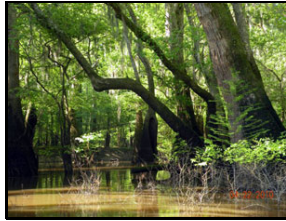
Email: info@townsbluffpark.com

Website: www.townsbluffpark.com



FROM Uvalda (the North), go 5 miles south on US 221, park sign is on the right, but turn left on Uvalda Landing Road. Then, turn left immediately into park entrance. Look for signs to Office/Heritage Center. FROM Hazlehurst (the South) go 8 miles north on US 221, look for sign on the right, and turn right onto Uvalda Landing Road. Then, take an immediate left and follow campground signs to the Office/Heritage Center. After 5PM, blow horn at the gate of campground, and the park host will open gate.

• 25 total RV sites, 12 pull through sites, can accommodate RV's up to 50ft. • 30/50 amp service, partial hookups, dump station • WiFi • Showers and restrooms • Laundry & ice • Controlled access to campground • Group camping available • Tent camping • Day use area with 2 large covered picnic areas • Fire rings, boating, boat ramp, canoeing, fishing, horseshoes, hiking trails and fitness trail • Access to WMA horse trails • Hunting (WMA regulated - seasonal)



Must present All American RV Parks membership card for discount: • 43% off regular rate. Rate is good for 4 days. • Discount is valid Sunday through Thursday. All other days are at the regular rate. • Discount not valid during holidays and special events. • Credit cards accepted. • Pets welcome. • Rate + tax. Rates subject to change. • Located along the historic Altamaha River, 8 miles from Hazlehurst and 5 miles from Uvalda.

Twin Oaks RV Park

305 GA Highway 26 East

Elko, GA 31025

478.987.9361

Email: info@twinoaksrvpark.com

Website: www.twinoaksrvpark.com



Twin Oaks is conveniently located in Middle Georgia, about 30 miles south of Macon and 7 miles south of the Georgia National Fairgrounds. In Georgia, From I-75, Get Off At Exit 127, go EAST 2/10 mile to Twin Oaks RV Park. We are in the Northeast corner of interchange. Two Hours South Of Atlanta, Or Two Hours North From The Florida State Line.

• Spacious RV sites, with 30/50 amp service, water and sewer • Sparkling 24 x 48 saline swimming pool (open April - October) • Hot tub with Private deck and gazebo • Big-Rig friendly with pull-through sites up to 90 feet • Each site has a concrete patio with picnic tables • Propane on location • Clubhouse for group complete with kitchen, outdoor grill and private meeting room • Free wireless high speed access available at all sites • Laundry facilities • bathhouses with hot showers • horseshoes • badminton • dog walks



Must present All American RV Parks membership card for discount: • 50% off regular rate • Rate is good for 2 days

Downata Hot Springs

25900 S Downata Rd
Downey, ID 83234
208.897.5736

Email: info@downatahotsprings.com

Website: www.downatahotsprings.com/

3 1/2 miles South of Downey, Idaho on Highway 91



• 50 amp service available along with more 20/30 amp hookup sites • Swimming is not included in any of our rates • Overnight guests receive a discount off regular pool admission rates • Campground RV site rates only include the vehicle pulling the RV • All tents and extra vehicles have an additional charge and must register



Must present All American RV Parks membership card for discount: • 50% off regular rate • Rate is good for 2 days • Discount Rate only applies to campground Rates • Swimming, soaking and other facilities have an additional charge and these rates are not included in the discounted rate or campground rate • Discounted rate only applies Monday- Thursday with holidays excluded

Moose Crossing RV Park

Mat ile Post 100
Moore, ID 83255

208-588-2994 • 620-233-0000

Email: oregondon123@yahoo.com

Website: www.moosecrossingrv.com



We are located on the north side, at 3798 N US Highway 93 (mile post marker #100) between Arco & Mackay in the Community of Leslie.

• The RV Park has 33 spaces, trees, grass, laundry facilities and fire rings • 40 ft pull-thru & tent sites & Full Hook-ups • Private bathrooms w/showers, coin-op laundry & WiFi • ATV • Two Cabins and a large Tipi are available for rent • Near by: Craters of the Moon National Monument, Yellowstone National Park, EBR-1, White Knob Mountain Bike Race, Idaho's Wildest Rodeo, Atomic Days Rodeo, & Bull Arama. ATV Trails, Boating, Fly Fishing, Gold Panning, Hiking, Historical Sites, Hang Gliding, Mountain, Climbing, Shopping, Wildlife Watching.



Must present All American RV Parks membership card for discount: • 50% off regular rate. Rate is good for 3 days. • Located in the beautiful Big Lost River Valley.

River Haven RV Park

6920 Bruneau Hwy
Marsing, ID 83639

Email: kathygannuscio5@gmail.com

Website: www.riverhavenrvpark.com



Located 2 1/4 miles South of Marsing and 12 miles from Nampa. Take exit 33 from I-84 onto Highway 55 to Marsing, about 9 miles. Cross Snake River and turn left onto Bruneau Highway. Travel 2 1/12 miles to River Haven RV Park.

• Wi-Fi • Laundromat • Bathrooms/showers • Fishing • Bird Watching • Picnic Area • Fire Rings • Quiet Country Setting • Big Park Area • 30 - 50 Amp Hook Ups



Must present All American RV Parks membership card for discount: • 50% off regular rate • Rate is good for 3 days • No discount on tent sites

Sheffield RV Park

5362 South Highway 191
Rexburg, ID 83440
208 251 4182

Email: jetace1@hotmail.com



FROM Idaho Falls take Highway 20 North for 17 miles. Turn right after milepost 328, then right again. FROM Rexburg take Highway 20 South for 4 miles. Turn left after milepost 329, then right. Campground is located 1/4 mile.

• 25 RV sites • Sites can accommodate any size RV, some pull-thrus • 30/50 amp service • 10 tent sites • Deluxe cabins for rent • Comfort stations, Laundry facilities, Showers • Wi-Fi • RV repair service • Campground gift shop • Golf tee, basketball, volleyball • Fire pits • Fishing and inner-tubing



Must present All American RV Parks membership card for discount: • 50% off regular rate. Rate is good for 7 days. • Monthly stay is \$300 plus power.

Buena Vista Farms, Inc

1630 Old US Hwy 67
 Chapin, IL 62628
 217-243-3290

Email: info@buenavistafarms.net

Website: buenavistafarms.net



FROM Springfield, IL take I-72 west to US HWY 67 N. Proceed approx. 5 miles to Mt Zion Rd Exit, turn R. Make a L at stop sign (Old US Hwy 67). Campground will be on your R in 1/2 mile. Campground is located 3 miles NW of Jacksonville, IL on Old US HWY 67. This is the frontage road parallel to US HWY 67

• 60 full service RV sites that can accommodate RV's up to 50ft with back in and pull through sites • 20/30/50 amp, dump station, Wi-Fi • Restrooms, showers, laundry • Clubhouse, picnic tables, fire rings, beach: Playground, fitness center • Ice, fishing, basketball, dodgeball court, volleyball, biking • Stocked lakes for fishing, paddle boats, kayaking and canoeing • Nature watching, hiking • Security • New cedar exterior log cabins overlook a lake with spectacular views



Must present All American RV Parks membership card for discount: • Members receive a 50% discount for 2 days. • \$5 daily energy service charge for all stays. • Rates are for four people per RV site. Additional guests are \$5.00 per child under 13 yrs. old, all others \$10.00 per person. • Golf carts allowed, no ATV's. • Pets welcome. • The resort prides itself and does not accept RV's in poor condition. • No tent camping available. • The resort is open April 1st thru October 31st.

Camp A While

1779 1250th Ave
 Lincoln, IL 62656
 217-732-8840



FROM I-55, take Exit 133, and slowly follow the State CAMPING signs. Go south (left) on Rte 66 for 0.8 mile. Turn right at the grain elevator (1800 St.), and go 1.7 miles to 1250 Ave. Turn left and entrance to Camp A While is 0.2 mile on the right. From Lincoln College, go north on Ottawa St. / Nicholson Rd and 1250 Av. Cross Rte 66, and continue 0.7 mile to Camp A While.

• 22 total RV sites, large rigs welcome • Full and partial hook-up sites • Six pull through sites • 20/30/50 amp service • Wi-Fi • Showers, restrooms, & laundry facilities • Playground • Dump station • Pets welcome



Must present All American RV Parks membership card for discount: • 50% off regular rate • Rate is good for 2 days. No reservations accepted. Call 271-732-8840 the day of arrival to check availability.

Kamper Kompanion

18388 E Frontage Rd
Litchfield, IL 62056
217-324-4747

Email: kamperkompanion@royell.net

Website: www.kamperkompanion.com



South Bound

Travel South from Springfield, Illinois (about 35 miles) on Interstate 55 to Exit 60. Turn Left at end of ramp and go about 1/4 mile to East Frontage Road. Turn Right onto East Frontage Road and travel about 500 feet. Kamper Kompanion RV Park is on the Left.

North Bound

From the intersection of I-70 and I-55, travel North on I-55 for 40 miles to Exit 60. Turn Right at end of ramp and travel about 100 feet to East Frontage Road. Turn Right onto East Frontage Road and travel about 500 feet. Kamper Kompanion RV Park is on the Left.

• 28 Sites with Full Hookups (sewer, water, power) • 25 Pull-Thru Sites • Big Rigs • Plenty of Room for Slide Outs • 30 & 50 Amp Available at Most Sites • Several Large Trees for Shade and Comfort • Most Sites Provide Satellite Access • Wireless Internet • Propane • Washer/Dryers • Clean Showers / Restrooms • Central Dumpster • Credit Cards Accepted • Large Pavilion Available for Family and Group Gatherings • Playground Area • Dog Park



Must present All American RV Parks membership card for discount: • Park is open March 1st - December 15th • 50% off regular rate • Rate is good for Sunday through Thursday excluding holidays

Mill Point RV Park

310 Ash Lane
East Peoria, IL 61611
309-231-6497 • 309-231-9495
Email: dwb600@gmail.com
Website: illinoisgocamping.com



From the East; Springfield/Morton take I-74 from Bloomington, Exit 95 to Stop Sign. Turn R on 116 East go 5 miles. Exit left on Rt. 26 go 3.4 miles to Mill Point Road, turn L go .7 miles. From the West; take I-74 exit 95A to 116 turn L towards Metamora go 5 miles. Exit L on Rt. 26 to 3.4 miles to Mill Point Road turn L go .7 miles.

• 80 shaded, full hookup sites • Acres of beauty for hiking • primitive areas • fishing • boating • swimming • Private spring fed lake



Must present All American RV Parks membership card for discount: • 50% off regular rate

Paradise Camping Resort

11122 Station St
Garden Prairie, IL 61038
877-462-2671

Email: info@paradisecampingresort.com

Website: www.paradisecampingresort.com



FROM the west I-90 East to Genoa Rd. exit right at light, 5 miles on US 20 to Garden Prairie Rd. Turn left, & go one block to Station St. then turn right into the campground. FROM East I-90 West to Marengo/Hampshire exit, turn left at light and go 14.3 miles on US 20 to Pleasant Street, turn right into the campground. We are located 55 miles West of Chicago and 17 miles East of Rockford.

• 216 RV sites with 30/50 amp service, back-in and pull through sites to accommodate 45' RV's • 3 comfort stations, laundry facilities • Water, electricity, gravel and grass pads • Dump station, fire rings • River tubing, Lake swimming, Fishing • Biking, hiking, basketball, volleyball and horseshoes • Visit the Tropical Oasis Restaurant and Bar



Must present All American RV Parks membership card for discount: • 50% off regular rate. Rate is good for 3 days, Sunday through Thursday. • Discount is not valid holidays and special events. (Call for details.)

Timber Trails Campground

1276 Matts Lane
Mulberry Grove, IL 62262
618-326-8264

Email: rbroad@frontiernet.net

Website: www.timbertrails.itgo.com



Exit Interstate 70 and head north to Mulberry Grove, go straight thru 1st stop sign, across US Highway 40, cross Railroad tracks to 2nd stop sign, turn left (West) on Highway 140 West. Travel on 140 West for approximately 1 mile to campground entrance located on the right

• 64 RV site, full and partial hook-up sites available can accommodate RV's up to 44' • 10/30/50 amp service • Back-ins and 100' pull-through sites • Picnic tables, restrooms, shower facilities • Covered Pavilion, L.P. tank Filling, dumping station • Swimming pool, playground, Pirate Ship swing set • Volleyball court, horseshoes, washer boxes • Clubhouse with pool table



Must present All American RV Parks membership card for discount: • 50% off regular rate. Rate is good for 2 days. • \$3 additional charge per night for 50 amp service. • Cash or Checks only, no Credit Cards accepted.

Cornerstone Campground & Retreat Center

75 W County Rd 500 S
New Castle, IN 47362
765.987.8700

Email: cornerstonecampground@yahoo.com

Website: cornerstonecampground.com



Take I-70 to Exit 123 New Castle/ Spiceland. Go North to the first road. Turn right on 500 South. Cornerstone is 1 mile down on your right.

• Large campsites with picnic tables and fire rings • 30 and 50 amp electric hookups • W/E/S, W/E, and primitive sites • Bathrooms with hot showers at 2 locations • Riverside sites • Pizza, Ice and Wood delivery to your site • 2 playgrounds • 18 hole mini-golf • Salt water pool and kiddie pool • Largest tube playset in all of Indiana • Recreation area with basketball, shuffleboard, volleyball, and more • Arcade • Wifi Internet • Supervised activities • Sunday Morning Family Church Services at 10 AM • Theme weekends and events • Live entertainment on scheduled weekends



Must present All American RV Parks membership card for discount: • 50% off regular rate • Rate is good for 2 days • No holidays or weekends

Deer Ridge Camping Resort

3696 Smyrna Road
Richmond, IN 47374
765-939-0888

Email: deerridg@aol.com

Website: www.deerridgecampingresort.com



Easy-on and easy-off access from I-70. At exit 153, turn right (S) on Rt 227 (doesn't matter which way you're coming from, you still have to turn right) and go 1 block and turn left (E) (you can only turn left) on Smyrna Rd. Campground entrance is a quarter mile on the left.

• River access a short hike down to a branch of Whitewater River • Canoe rentals • Fishing at the Middlefork Reservoir • Campground hayrides on special occasions • Fish Tale Pond is a stocked, catch-and-release pond • Micro Golf has 9 challenging holes • Antlers Arcade & Game room



Must present All American RV Parks membership card for discount: • 50% off regular rate. Rate is good for 2 days, discount valid Sunday through Thursday.
• Discount not value during holidays. • \$5 extra for 50amp. • We do not take advanced reservations. • Open May 1st through October 31st.

Free Spirit Campground

4140 Erie Church Road
Bedford, IN 47421
812-834-6164

Email: freespiritcamping@yahoo.com

Website: www.freespiritcamp.com



FROM Bedford, IN: Take 50 East to 446, North 1 mile to Erie Church Road. Park is on the left (southwest corner). FROM 65 at Seymour: Follow 50 West through Brownstown to 446. Turn North 1 mile to Erie Church Road. Park is on the left (southwest corner).

• 40 RV sites that can accommodate RVs up to 40' • Full hookup sites, 30/50 amp service • Swimming pool, 18 hole Miniature golf, Playgrounds • Shelter houses, Cabin rental & Tent Camping • Volleyball, Basketball court • Dump station • Restrooms, showers and laundry facilities



Must present All American RV Parks membership card for discount: • 50% off regular rate. Rate is good for 2 days, Monday through Thursday only - Holidays excluded. • \$5.00 per day for 50amp service. • Reservations must be made ahead of time. • Located 10 miles from Bedford and 25 miles from Bloomington. • Open all year with limited facilities in the winter.

Grand View Bend Campground

4630 N 100 E
Howe, IN 46746
574-220-9554

Email: grandviewbend@gmail.com

Website: www.grandviewbend.com



FROM Exit 121 (LaGrange Exit) off the Indiana Toll Road, proceed south (right) approximately 2 miles on Highway 9 to Highway 120. Turn east (left) on Highway 120 and travel 1 mile through the town of Howe, to County Road 100 East. Turn right on 100 East and go 1/2 mile to the park on the right. Watch for signs.

• 40 total RV sites and can accommodate RVs up to 40 ft • Outdoor heated swimming pool • Tennis Court, Basketball court • Miniature Golf Course, Sand Volleyball Court, Horseshoe Pit • Boat ramp into Pigeon River • Open Air Pavilion and Activities for all



Must present All American RV Parks membership card for discount: • 50% off regular rate. Rate is good for 2 days. • Call for reservations. • Open from the middle of April to the middle of October, weather permitting. • We are located in NE Indiana just southeast of Howe. Approximately 65 miles North of Ft. Wayne IN, 50 miles East of South Bend IN, 110 miles West of Toledo OH, and about 60 miles South of Kalamazoo MI.

Little Farm On The River

1343 Bellview Ln
Rising Sun, IN 47040
812.438.4500

Email: littlefarmrv@hotmail.com

Website: littlefarmresort.com



From I 275 exit 16 West onto 50 West. Go West on 56. Turn left on Bellview Lane. From I 71, exit 55. North on 1069. East on 156. Continue on 56. Turn right on Bellview Lane.

• Themed Weekends • Olympic Sized Pool • Snack Shack • 2 Pavilions • 2 Playgrounds • Miniature Golf • Crafts Time • Pool Games • Basketball • Shuffle Board • Cornhole Tournaments • Hay Rides • Golf Cart Rental • Pool Tables • Foosball • Arcade Games • Wireless Internet • Card Tables • Large Seating Accommodations • Fire Place



Must present All American RV Parks membership card for discount: • 50% off regular rate • Rate is good for 4 days • Sun-Mon-Tue-Wed only • No holidays • No weekends • Rates Fri-Sat: \$45.00, Sun-Thu: \$38.00

Yogi Bear Jellystone at Raintree Lake

4577 W State Rd 56
Scottsburg, IN 47170
812-752-4062 • 800-437-0566

Email: yogisburg@gmail.com

Website: www.jellystoneraintreelake.com



FROM I-65, take Exit #29, and go 4 miles west on State Road 56, located on left side. 30 miles north of Louisville, KY. 82 miles south of Indianapolis, IN.

• 30/50 amp • Back-in & Pull-thru with full hookup • Fishing • Dump station • Ring fire • Game room • Wifi hot spot • Pet friendly • Horseshoes, Volleyball, Playground • Mini golf, Row boat rentals • Pool • Pavillion • Laundry • Propane • RV Storage



Must present All American RV Parks membership card for discount: • 50% off regular rate • rate is good for 4 days, Sunday-Thursday. \$22 plus tax per night up to 4 people in one camper • 50 amp \$2 more per night • Open April 1 - Nov 1.

Grotto Campground

330 N Broadway
West Bend, IA 50597
515-887-2371

Email: information@westbendgrotto.com

Website: www.westbendgrotto.com



Located 2 blocks west of Hwy 15 in West Bend on the North end of town.

• 53 total 30 amp RV sites • All sites are pull throughs with partial hookups (Electric only) • Central water & sewer dump station available • 20 tent sites available • Wi-Fi, pay phone available • Restrooms & showers • Fire rings, playground, handicap accessible • Store & restaurant • Picnic area, Fire-pit/grills available • Nature watching • Chapel, and pay phone available • A Shelter House is available if it is raining or you can let us know ahead of time and book it with your site for a family event • Biking allowed on grounds, however closest bike trail 20 min+ away • Gas available a few blocks away



Must present All American RV Parks membership card for discount: • 50% off regular rate. Rate is good for 2 days. • Camping available from April through November, weather permitting. • Discount not available Jun 22nd-24th, 2014, nor on tent sites. • Credit cards accepted. • Pets welcome.

Lakeshore RV Resort & Campground

1418 Q Avenue
Oelwein, IA 50662
319-800-9968

Email: mail@lakeshoreiowa.com

Website: www.lakeshoreiowa.com



The resort is located one mile west of Highway 150 on Highway 281 and 1/4 mile north of Highway 281 on Q Avenue.

• Wi-Fi internet access • Beach with swimming • Sand volleyball court • 9 hole miniature golf • Basketball • Horseshoes • Shuffleboard courts • Children's playground (2) • Toddler train & wagon rides • Children/family activities • 4 hole frisbee golf • Canoeing (1) or bring your own



Must present All American RV Parks membership card for discount: • 50% off regular rate • Rate is good for 5 days • Members are welcome for unlimited stay Sunday-Saturday. • There is a \$5.00 per day energy surcharge. • Discount not valid during holiday weekends. Regular rate applies.

4 Aces RV Park
1004 Massachusetts Street
Kinsley, KS 67547
620-659-2321
Email: dhaproff@aol.com
Website: 4acesrvpark.com



FROM Dodge City: Travel NE on US Hwy. 50/56 to Kinsley, KS. Stay on 50 and cross the overpass at Kinsley (do not turn onto Hwy 56). The RV Park is located at the corner of US 50 and Massachusetts, as you enter town and cross the over-pass. When coming from the East on 56/183 as you enter the town of Kinsley, stay on 183 and go south to Hwy 50. Travel four blocks, turn right and the RV Park is located 3 blocks on your left.

- Convenient Concrete Pull-Through sites that are extra long and extra wide
- There is 50, 30, & 15 amp service at each site
- City Water and Sewer at each site
- Free Wi-Fi
- Free Movie Rentals
- Large Laundromat, Clean Restroom & Shower Facilities
- Coon Creek Nature Trail, Fishing
- Pet Friendly with 10 Acres of green grass and trees for you and your pets enjoyment



Must present All American RV Parks membership card for discount: • 50% off regular rate. Rate is good for 2 days. • Open year-round. Reservations suggested. • Active duty military get 1st night free (electric only). • Cash or check only. • Pets are welcome, pets and husbands must be leashed at all times. • You can find us at the junction of Highway 50, 56, & 183.

Deerfield Beach Campground

2385 River Rd
PO Box 16
Deerfield, KS 67838
620-426-8321

Website: [www.kansasrvparks.org/\(Deerfield\)](http://www.kansasrvparks.org/(Deerfield))



15 miles from Garden City and 8 miles from Holcomb. From Hwy 50 in Deerfield turn onto Main Street go south one mile and cross the river bridge. Turn left onto River Road and go approximately ¼ mile to Deerfield Beach Campground. (Look for signs.)

- 29 total level & grassy RV sites
- Lake
- 20/30/50 amp
- Restrooms & showers
- Tenting
- Beach paddle boats
- Horse corral
- Pavilion for groups



Must present All American RV Parks membership card for discount: • 25% off regular rate • rate is good for an unlimited number of days.

Lakeside Recreational Park

1288 E. Lapsley Road
Assaria, KS 67416
785-667-5795

Email: office@lakesiderec.org

Website: www.lakesiderec.org



Take Exit #82 off of I-135. Go east for 1/4 mile to stop sign. Go south for 2 miles. Go east for 1.3 miles on Lapsley Road (Gravel Rd), park is located on the right.

• 63 acres with 25 RV sites • Back-in sites and pull-thrus, (15 with full hook-ups and 15 with W/E hookups) • 30/50 amp service • RV storage available • Free Wi-Fi • Canoeing, fishing • 400' waterslide (open only on Saturday and Sunday afternoons), beach • Basketball, volleyball, and picnic areas with fire rings • Shady spots available • 12-acre lake is perfect for fishing



Must present All American RV Parks membership card for discount: • 50% off regular rate. Rate is good for 7 days. • Pets welcome, must be leashed. • Located 6 miles from Lindsborg and 8 miles from Salina.

Owls Nest Campground

1912 Old Highway 40
Junction City, KS 66441
785-238-0778

Email: info@owlnestcampground.com

Website: www.owlnestcampground.com



Take exit 295 US-77/KS-18 W. Go south on US-77 for approx 1/10 mie. Turn RIGHT (west) on OLD HIGHWAY 40. Owl's Nest Campground is on the right hand side of the road just past Champions Car Wash and AA Self Storage. Just a few minutes from Fort Riley military base.

• The campsites are larger than most with grass, trees, picnic tables, dump stations, 30 or 50 amp electrical utility hook-ups, water, sewer, and 67 cable channels. If you need propane, it is available upon request. The campground also offers two coin operated washers and dryers, a complimentary shower facility, 24 hour cable and internet access. Personal on-site help is available from the office staff and camp host. The campground also offer cabin rentals with screened in porches and sleeping lofts. Inside you will find many of the same comforts of home to include gas heat, central air conditioning, futon, table and chairs, stove, refrigerator, kitchen sink and a bathroom with shower. They have a cozy bedroom with a full size bed separate from the main living area. For your convenience they will furnish the pots, pans, cooking utensils, plates, bowls, silverware, glasses, toaster, coffee maker, and microwave as well as sheets, pillows, and towels.



Must present All American RV Parks membership card for discount: • 50% off regular rate. Rate is good for 2 days. Same day reservations only. Sunday through Thursday. There will be a \$5.00 electrical surcharge per night between June 1st and August 31st.

Pine Haven Retreat

217 E US 50
St John, KS 67576
620.549.3444

Email: mimi@pinehavenrvpark.com

Website: www.pinehavenrvpark.com



South Central Kansas (Stafford County) on two major highways. Located 2 miles East of the Highway 50/281 Junction. They can be found on the South side of Highway 50, right next to the rest stop. Located approximately 50 miles West of Hutchinson, 30 miles South of Great Bend, 20 miles North of Pratt, 70 miles East of Dodge City.

• Full Service! • 30 & 50 AMP Service • Sewer hookups and dump station • Frost free water hydrants • Clubhouse • Laundry Facilities • Plenty of trees with hideouts for the kids or grandkids!



Must present All American RV Parks membership card for discount: • 50% off regular rate • Rate is good for 3 days • \$3.00 for 30 AMP • \$5.00 for 50 AMP

Spring Lake RV Resort

1308 S. Spring Lake Road
Halstead, KS 67056
316-835-3443

Email: office@springlakervresort.com

Website: springlakervresort.com



FROM I-135, take Exit 30 and go West 12 miles on Highway 50 and turn South onto Spring Lake Road. Go 1/8 mile to RV Resort. FROM Hutchinson, go East on Highway 50 for 20 miles to the RV Resort located on the right. FROM Salina, take I-135 South to Exit 48, follow County Road South through Moundridge and continue South 14 miles to Highway 50, turn right (West) on Highway 50, two miles to Spring Lake Rd., turn left and go 1/8 mile to the RV Resort.

• 180 total RV sites can accommodate RV's over 40ft • 30 & 50 AMP service • Pull-through and back in sites • Full hookups, partial hookups • Tent sites and cabins • Wi-fi internet • Onsite propane and dump station • Laundry facilities • Swimming pool, miniature golf, exercise room, basketball and playgrounds • Fishing - catch all you want but please only keep two per day • Band venues, jam sessions, karaoke and bingo



Must present All American RV Parks membership card for discount: • 50% off regular rate. Rate is good for 2 days. • Located 12 miles from Newton and 4 miles from downtown Halstead.

Renfro Valley RV Park

2380 Richmond St
Mt. Vernon, KY 40456
800.765.7464

Email: helpdesk@renfrovalley.com

Website: www.renfrovalley.com



South Central Kentucky, Right off Interstate 75 at Exit 62 (most traveled Interstate in America). Located 45 miles south of Lexington & 135 miles north of Knoxville, Tn.

• Cable TV Hookups • 30 & 50 Amp electric service • Water & Sewer • Convenient coin laundry • Sparkling Clean Bath House • Shaded creek-side sites available • Pull-Thru sites available up to 46' • Sanitary dumping station • 24-Hour Security • LP Gas • Shuffleboard • Horse Shoes • Group Rates Available!



Must present All American RV Parks membership card for discount: • 50% off regular rate • Rate is good for 2 days

Quiet Oaks RV Park

18159 TV Tower Rd
Kinder, LA 70648
888-755-2230 • 337-756-2230

Email: hkeyes@quietoaks.com

Website: www.quietoaks.com



Located 8 miles from Kinder and ½ mile from Fenton. I-10 Exit 44, ½ mile north of Fenton, 2 blocks West of US 165 on TV Tower Rd.

• 75 total RV sites • Can accommodate any length RV including tow • Shady spacious and level sites • Park offers recreation, fishing pond and more! • Free Wi-Fi • Large Clubhouse with special rates for groups



Must present All American RV Parks membership card for discount: • 50% off regular rate • rate is good for 21 days. Payments by cash or check only, no credit cards.

Rubber Ducky Resort & Campground

Road 76.5N
Woodlands, MB R0C 3E0
204-322-5286

Email: info@rubberduckyresort.com

Website: www.rubberduckyresort.com



FROM I-40: Take Exit 80 (Spur 228) turn north and drive approximately 1 block. FROM HWY 287: North on 228 for 1 mile. Camper Park is located on the right.

- 200 total RV sites • Can accommodate RVs up to 60' • Full service plus water & electric sites • Dump station • 30 amp service • Free showers:Laundromat
- 2 in-ground heated pool • Hot tub rentals • Recreation room, pool table, arcade/games area • Playground: Catch and release fishing • Free Wi-Fi • Duck pond



Must present All American RV Parks membership card for discount: • 50% off regular rate. Rate is good for 1 day. Not valid 3-day holidays or weekends during July and August.

Cedarville RV Park Resort

634 E Grove St
Cedarville, MI 49719
906-484-3351

Email: info@cedarvillervpark.com

Website: www.cedarvillervpark.com



From Jct. I-75 and Hwy M-134 (Exit 359 Cedarville-Hessel Les Cheneaux Isl.) Go E. 17 miles thru Cedarville blinker to Bay St. go 1 block S. to Grove St. Watch for signs.

- Boat & Kayak Rental • Boat Docks • Full Hook-up/50/30/20 electric • Recreation Hall • Wi-Fi Access • Fish Cleaning Building • Fire Rings • Hot Showers • Picnic Tables • Clean Rest Rooms • Laundromat



Must present All American RV Parks membership card for discount: • 50% off regular rate • Rate is good for Sunday through Thursday • No Holidays

Enchanted Acres

9581 Brooks Rd
Irons, MI 49644
231-266-5102

Email: joan@enchantedacrescamp.com

Website: www.enchantedacrescamp.com



FROM Baldwin take M27 north 16 miles to Irons Exit, turn west and go six miles to Irons (there will be a Lake Osceola Bank on the right). Turn south and go one mile to 9581 Brooks Rd. From Cadillac, take M55 six miles west of M37, take Snyder Rd south to the park.

• Quite family park with 63 total RV sites • Large shady campsites • Can accommodate RV's up to 50' • Some pull-through sites • Park offers volleyball, canoe & kayak rentals, pet farm, campwood, ice, badminton • Four private campsites with 50amp service • All reservations are paid in full, no refunds, no outside firewood. (All firewood must be purchased on site.) • Credit cards accepted • Pets are allowed on leash • Rate plus tax: A/C or electric heat is #3.00 additional per day. Rates are for 2 adults, \$5 for each additional person. Rustic tent sites \$16.00/Discount \$8.00. Tent sites with electric \$18.00/Discount \$9.00. Full hookup sites for rigs under 30' for \$20.00/Discount \$10.00. Full hookup sites over 30' for \$25.00/Discount \$12.50 • Free casino package



Must present All American RV Parks membership card for discount: • 50% off regular rate • rate is good for an unlimited number of days.

Everflowing Waters Campground

5481 Brackett Rd
Williamsburg, MI 49690
231-938-0933

Website: www.everflowingwaterscampground.com



Jct M72 & US 31(Acme) east side of Traverse City. Travel north on U.S. 31 one mile. One mile right (east) on Brackett Rd & we are on the left (north) side. Located 8 miles from Traverse City.

• Privacy & convenience • Tree-shaded grassy lots • 32 RV sites • Can accommodate up to 45' campers • Pull-thrus & back-ins • 20/30/50-amp • Partial hookups • Tent sites • Wi-Fi • Fire rings • Fishing • Nearby: Boating, Fishing, Swimming and two Championship level Golf Courses.



Must present All American RV Parks membership card for discount: • 50% off regular rate. Rate is good for 5 days. • Discount is NOT valid during the month of July.

Kestelwoods

10860 W 48 1/2 Rd
Wellston, MI 49689
221-862-3476

Email: info@kestelwoodscampground.com

Website: kestelwoodscampground.com

2.5 miles South of M55 & M37 on M37 & 48 1/2 Rd.

• 96 Sites with W & E • Dump Station • 5 Bathhouses • Heated Pool



Must present All American RV Parks membership card for discount: • 50% off regular rate • Rate is good for 14 days

Leisure Valley RV Resort

40851 C R 669
Decatur, MI 49045
269-423-7122

Email: leisure@frontier.com

Website: www.leisurevalley.com

Take I-94 to Exit 56. Go to the town of Decatur. Turn left on George Street and follow the signs to the park.

• Mini Golf • Laundry • Swimming Pool • Horseshoes • Boating • Hiking • Store • Clubhouse



Must present All American RV Parks membership card for discount: • Rate: 50% off regular rate, no time limit • Credit cards accepted • Discount not available on Holidays • Available Sunday through Thursday only



Timber Surf Camping Resort

6575 E Dewey Rd
Fountain, MI 49410
231-462-3468

Email: info@timbersurfresort.com

Website: www.timbersurfresort.com



Located 5 miles North of Walhalla off US-10 on North side of Round Lake on Dewey Road.

• 70 sites with water and electricity • Clean restrooms • 20/30/50 Amp service • Picnic tables • Fire Rings • Fishing • Boat Dock's • Boat Ramps • Fish Cleaning Stations • Boat Rentals • Fire Wood • Kayak Rentals • Laundry services • Small convenience store • Recreation Hall • Pool table • Ping pong table • Arcade games • Jukebox • Bring your own boat or rent one for lake fishing • Beach volleyball



Must present All American RV Parks membership card for discount: • 50% off regular rate (Sunday thru Thursday • No holidays or weekends • Rate is good for 2 days

Timber Trails RV Park

84981 47 1/2 St
Decatur, MI 49045
269-423-7311

Email: timbertrailsrvpark@hotmail.com

Website: www.timbertrailsrvpark.com



Located 2 miles southwest of Decatur on M-51, 1 mile past McDonalds Restaurant. Turn right onto 47 1/2 Street. 3/4 of a mile on right is campground entrance. Decatur is 6 miles south of I-94 on M-51 or 15 miles north of Dowagiac on M-51. The park entrance is well marked with a lighted sign.

• Fishing • Boating • Pets Welcome • Wireless Internet • Horseshoes • Laundry Facility • 50 Amp Service



Must present All American RV Parks membership card for discount: • Rate: 50% off regular rate, no term restrictions • Credit cards accepted • Discount not available on Holidays • Discount not available on Weekends • Pet Restrictions

Golden Eagle Lodge
468 Clearwater Rd
Grand Marais, MN 55604
800-346-2203
Email: info@golden-eagle.com
Website: www.golden-eagle.com



Head north up on the Gunflint Trail (Cook County #12) 27 miles to Clearwater Rd , CC#22, Right turn, then 2.5 miles to driveway to lodge, right turn, 7/8 mile into lodge area. Large signs on Clearwater RD.

For maps: www.flourlake.com

• 9 total RV sites can accommodate RVs up to 48' • Each site has water & 20/30/50 amp service available • Some pull thru available • Dump station • Swimming beach and dock space (\$) available • Wireless internet in main lodge • Resort offers boat/motor, pontoon, canoe and kayak rentals • Biking, hiking, fishing, hot showers, store, bath house, nature trails, and tipi & nature center w/fun activities • Campground and bath house is handicap accessible



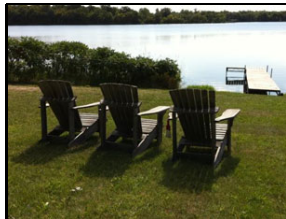
Must present All American RV Parks membership card for discount: • 50% off drive-ups/ base rate only. Discount is good for 1 day and is renewable daily based on availability. • Call ahead to check availability. • Rates are for 2 people, \$5.00 for each additional person. • There is a \$5.00 fee for each pet. Must clean-up afterwards. • RV sites open May through November 1st. • Located 27 miles from Grand Marais up the historic Gunflint Trail

Heisler's Country Camping
31870 Co Hwy 130
Vergas, MN 58687
218-342-2233
Email: sallybells56@yahoo.com



1 mile south of Vergas on County Road 4. Turn right on Co. Hwy 130.

• 51 total RV sites • 50 amp hook ups, with full hookups • Pull through sites, can accommodate any size RV • Wireless internet, shower, restrooms, dump station, water, sewer, recreation hall, pool tables, video games • The hall is ideal for family reunions and parties • Outdoor activities include biking, hiking, picnic areas, volley ball, basketball hoop, picnic sites, children's playground, firewood/ camp fires • Handicap access • Laundromat, propane, groceries, gasoline, car wash, fishing license, bait & ATM machine • We now have a campground pub



Must present All American RV Parks membership card for discount: • 50% off regular rate. Discount is valid Sunday through Thursday. Rates are valid for 2 days. • Rates are for two people, \$2.00 for each additional person. \$5.00 additional charge for 50AMP. • Pet Friendly.

Maple Springs Campground & Country Store

21606 CO 118
Preston, MN 55965
507-352-2056

Email: maplecamp@gmail.com

Website: www.maplespringcampground.com



FROM Preston: 9 miles west of Preston on Hwy 16 than 4.5 miles south on County Road 118. FROM Spring Valley: 6 miles east of Spring Valley on Hwy 16, then 4.6 miles south on County Road 5 and 1.5 miles east on County Road 118.

• 69 sites / 50 with 30 amp service of which 7 have 50 amps also (20 amp also) • Full hook-ups and back-ins can accommodate RVs 44+ ft (sites are 2,000+ sq ft) • Campground has emerald green grass with picnic tables and fire rings at each campsite • Horses welcome • 3 comfort stations, Wi-Fi, phone, recycling • Biking, nature watching, large activity field with volleyball net • Country store has groceries, fire wood, ice, RV and camping supplies, fishing supplies, bait, propane & • more • Hiking distance of Forestville/Mystery Cave State Park, minutes from two famous Caves, the Bike Trail, area Golf Courses, Canoe Streams, a large Amish community and two Laura Ingles Wilder sites



Must present All American RV Parks membership card for discount: • 50% off regular rate. Discount is good Sunday through Thursday. • Rates are for no more than six. \$5.00 for each additional adult per night. • Discount is not valid holidays. • Credit cards accepted. • Pets are allowed. • Open April through November (weather permitting).

Haas-Cienda Ranch & RV Park

38 Haas Cienda Ln
Poplarville, MS 39470
601-795-2747

Email: haasciendaranch@bellsouth.net

Website: www.haasciendaranchandrvpark.com



FROM I-59 take exit 27 at the top of the ramp, follow signs. Go about 1-1/2 miles and turn right on Barlow Lane. Go about 1/4 mile and turn left into ranch, look for the signs. FROM I-59 take exit 27 at the top of the ramp, follow signs. Go about 1-1/2 miles and turn right on Barlow Lane. Go about 1/4 mile and turn left into ranch, look for the signs.

• 65 total RV sites, 50 amp service, 65x30 sites • Full hook-ups, bath houses, swimming pool • The World's Largest Inflatable Waterslide (call for open dates) • Laundry mat • Picnic tables • Club house • Fire rings for campfires • Band stand • Primitive camping • Two local golf courses, Golf Club Card welcome



Must present All American RV Parks membership card for discount: • 50% off regular rate. Rate is good for 2 nights. • Pets welcome, but must be kept on a leash and cleaned up after. • Located 60 miles from Gulfport, MS and 60 miles from New Orleans.

Southern Oaks Mobile Home & RV Comm

10530 Three Rivers Rd
Gulfport, MS 39503
228-832-5528 • 228-860-8605
Email: twosouth@bellsouth.net



FROM I-10, take Highway 49N. Turn east at Landon Road and go to Three Rivers Road. Go north about 4/10 mile and turn right into Southern Oaks. If you do not see the Southern Oaks Mobile Home & RV Community, then you are not in the right place!

• 70 total RV sites, can accommodate any size RV, 30/50 amp service, full hook ups, restroom, Cable TV included on all sites, Wi-Fi, laundry available across the street, close to shopping and restaurants.



Must present All American RV Parks membership card for discount: • 50% off regular rate. Rate is good for any 3 nights (No blackout days). • No vicious dogs breeds allowed. • Located 8 miles from Long Beach and 10 miles from Biloxi.

Caplinger Mills River Front Resort

14630 East 676 Road
Stockton, MO 65785
417-276 5409
Email: caplingerdon@yahoo.com
Website: www.caplingermills.net



FROM Kansas City - Approximately 120 miles: Hwy 71 South to Hwy 54 East, Hwy 54 East to Hwy 39 South, Hwy 39 South Runs into Hwy N East, Hwy N East to Junction Spur N East and follow signs to resort. FROM Joplin - Approximately 100 miles: Hwy 71 North to Hwy 54 East, Hwy 54 East to Hwy 39 South, Hwy 39 South Runs into Hwy N East, Hwy N East to Junction Spur N East and follow signs to the resort.

• We have 4 RV Sites that have Water/50 Amp Electric/Sewage • 12 Sites that have Water/15 or 30 Amp Electric • 6 Sites that have no hook ups • Other areas for either Dry Camping or Tent Camping • 4 cabins can accommodate up to 6 guests



Must present All American RV Parks membership card for discount: • 50% off regular rate. Rate is good for 2 nights.

Hickory Hollow Resort

158 SE Hwy PP
Tightwad, MO 64735
660-477-3413

Email: hickoryhollowresort@yahoo.com

Website: www.hickoryhollowresort.com



FROM KC, HWY 71 SE to Harrisonville then Hwy #7 SE to Tightwad, left on Hwy PP N for 1 mile. From St. Louis: I-70 W to Hwy 65 S to Hwy C-W 14 miles, to Hwy PP S 3 miles. From Springfield MO.: Hwy 65 N to Warsaw, left on Hwy 7 W 14 miles to Tightwad, turn right on Hwy PP N 1 mile. From Oklahoma: Hwy 13 North to Clinton. Take a right on Hwy 7. Go 14 miles to Hwy PP North. 1 1/2 miles on right.

• 86 total RV sites, can accommodate up to 50' RVs • 30/50 amp service • Full hook-ups: Back-ins and pull-thrus available • Restrooms, showers • Golf, swimming pool • Laundry room • Game room • Playground, horseshoe pits • Camp store with snacks, ice, drinks, gifts, etc. • Lake boat launch and beach nearby • Good fishing and hunting • Pets allowed but must be kept on a 6' leash at all times - No Pit Bulls, Dobermans, Rottweilers, Mastiffs, Chows, Wolf Breed, or any other aggressive dogs or other animals.



Must present All American RV Parks membership card for discount: • \$15 flat rate tax included, cash only. Rate is good for 2 days Sunday through Thursday, 20% discount thereafter. Does not include holidays or weekends before Labor Day • 2 adults and 2 children under age 18, all other, \$5 per night, per person • \$3 additional for 50 amp services • Open Mar 16 - Nov 14.

Kozy Kamp

71 Elk River Rd
Pineville, MO 64856
417-223-4586

Email: info@kozykamp.com

Website: www.kozykamp.com



FROM Highway 71 North take Pineville exit, go 1 mile to bridge, cross over bridge then turn Left into Kozy Kamp. From Highway 71 South Take EE (Pineville-Lanagan Exit) turn Left then turn Right, down hill to right - at stop light turn Right into Kozy Kamp.

• Can accommodate RVs up to 44' • All RV sites have electric and water • Full & partial hookup sites • 15/30 amp service available • Dump station • Hot showers, modern restrooms • Basketball, volleyball, swimming, fishing, canoeing, shuffleboard • Picnic tables, fire rings • Security • Ice, water, and a store • Located 5 miles from Anderson, MO.



Must present All American RV Parks membership card for discount: • 50% off regular rate. Rate is good for 2 days. • Discount valid Sunday through Thursday only. • Not valid on Holidays.

Lake Paradise Resort

985 NW 1901 Rd
Lone Jack, MO 64070
816-690-4113

Email: saeid@Lakeparadiseresort.com

Website: www.lakeparadiseresort.com



NOTE: GPS is not accurate. FROM I-70, Exit 28, Go South for 8 miles. Left on Cline Road for 2 miles.

• 500 large RV Sites • Full hookups 30/50 amp • Laundry & Shower facilities • Swimming, Fishing, Mini Golf, Horseshoes, Shuffleboard • Boat & Golf Cart Rentals • Game Room • Basketball, volleyball • Hot Spots/Wi-Fi • Walking distance to convenience store, bait shop, supplies and repair facilities for your RV • Boat & RV storage



Must present All American RV Parks membership card for discount: • 50% off regular rate. Rate is good for 2 days.

Meramec Valley Campground & RV Park

1360 Hwy Uu
Cuba, MO 65453
573-885-2541 • 573-205-9054

Email: meramec@centurytel.net

Website: www.meramecvalleycampresort.com



FROM I-44 exit 210: N on Hwy UU approximately 1 mile. Enter on left.

• Propane • Miniature golf: Horseshoes, shuffleboard, tennis, basketball • Bathhouse with hot showers • Swimming pools, picnic area, playground • Fishing and supplies • Security • Adult center • Pavilion • Dump stations • Laundry • Store & Snack Shack • RV storage



Must present All American RV Parks membership card for discount: • 50% off regular rate • rate is good for 3 days.

Benton RV Park

2410 Chouteau St; PO Box 665
Ft Benton, MT 59442
406-622-5015

Email: info@montana-rv-park.com

Website: www.montana-rv-park.com



We are located at 24th and St. Charles Street in Fort Benton. Turn off at Fort Benton's Truck Route 80 proceed down hill to Junction 387, turn left on Junction proceed to stop sign. Turn left at stop sign, go one block, turn right, we are located at 2410 Chouteau Street.

• 28 total Full hookup RV sites • Can accommodate RVs up to 60 • 20/30/50 amp service • Pull-thrus and back-ins • Dump Station • Restrooms with Showers • Laundry Facilities • Wireless Internet available • Picnic Tables, BBQ, Ice • Horseshoes • Tent Camping available • Pet friendly



Must present All American RV Parks membership card for discount: • 50% off regular rate • rate duration is based on availability. Additional \$2 for 50amp service. Price is for 2 people, \$2 for each additional person.

Trout Creek Motel & RV Park

2972 MT HWY 200
Trout Creek, MT 59874
406-827-3268

Email: troutcreekrv@gmail.com

Website: www.troutcreekmotelrv.com



From Missoula, MT take I-90/200 West then North on HWY 93, Then West on HWY 200 to Trout Creek. From Spokane, WA: Take I-90 to 95 North to Sandpoint, HWY 200 East to Trout Creek.

• Restrooms (seasonal) • WI-FI access • Fire Rings • Fish cleaning station • Picnic Tables • Public Boat Ramp • Laundry Facilities • Showers • Dump Station • Partial hook-ups • 20/30/50 AMP Service



Must present All American RV Parks membership card for discount: • 50% off regular rate • Rate is good for 2 days • Sunday thru Thursday • No Holidays or Event weekends • Reservations recommended • Discount not available for online reservations • \$2.00 additional for 50 amp service • Rates are for 2 people • \$2.00 for each additional person

American Legion Park

1000 School St

Wilber, NE 68465

402-821-3016

Email: JOhnpr0@hotmail.com



FROM Lincoln, go south on Highway 77 to Highway 41. Go west 14 miles to Wilber. Take Highway 103 to the south edge of Wilber. Legion Park is located west of Highway 103, 1/4 mile south of Wilber.

• 50 total RV sites, can accommodate any size RV, water (not at all campsites) • Restrooms, showers, dump station, playground equipment • Ample dispersed tent sites available at \$5.00 per family (2 tents per family) • Large (150 PAOT) meeting building with cooking facilities is available on site for rental to groups with advance reservations



Must present All American RV Parks membership card for discount: • 50% off regular rate. Discount is valid for one night. • Discount is not valid July 20 through August 10 due to National Czech Festival. • Reservations are not accepted as ample sites are available. • *\$2.00 additional for 50 amp service. • Pet friendly. • Located 22 miles from Beatrice and 35 miles from Lincoln.

Country View Campground

120 Road East 80

Ogallala, NE 69153

308-284-2415

Email: camp@cvcampground.com

Website: www.cvcampground.com



FROM I-80 Exit 126 - 1/2 mile south, 1/4 mile east 120 Road East 80

• 48 full hookup pull thru sites, 4 back-in sites • 30 amp & 50 amp - \$3 per day • Cable TV - \$1.00 per day • Bathroom / Showers • Wireless Internet (Wi-Fi) • Local guest phone • Heated pool Memorial day thru Labor day • Antique Store, Cubed Ice, RV Supplies • Grassy tent spots • Picnic tables • Leashed pets welcome



Must present All American RV Parks membership card for discount: • 50% off regular rate. Rate is good for 2 days. • Reservations accepted. • Open year-round.

McGreer Camper Park

20925 Road 8

Big Springs, NE 69122

308-889-5093

Email: mcgreercamp@gmail.com

Website: www.mcgreercamperpark.com



Take Exit 107 off of I-80. Turn left on Road 8. We are in the southeast quadrant of the interchange.

• 28 RV hookup sites • Big rig 40' access • All complete hookups, 30/50 amp • All pull-throughs • Additional non-hookup camper sites • Tent sites • Shower rooms & Laundry • Dump station • Snack bar • Family friendly • Pet friendly • Horse boarding, short term



Must present All American RV Parks membership card for discount: • 50% off regular rate. Discount rate is good for 1 day. Check with manager for longer stays. • Big Springs located 10 miles from Nebraska/Colorado border and 16 miles from Ash Hollow.

Nevada Treasure RV Resort

301 W Leslie St

Pahrump, NV 89060

800-429-6665 • 775-751-1174

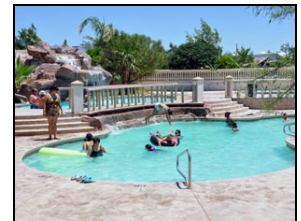
Email: frontdesk@nvtreasure.com

Website: www.NVTreasure.com



Located 4 miles northwest of Pahrump on Highway 160 at the corner of Highway 160 and Leslie St.

• Highly rated luxury RV Resort with 202 RV sites that can accommodate RVs up to 60 ft., 50amp • Free Wi-Fi, 10-ft • Waterfall, 2 outdoor solar heated pools and Jacuzzi • Indoor spa with saunas, steam rooms and Jacuzzis • Fitness center with Cybex equipment • Laundry facility • Putting green • Convention center, convenience store, bowling center • Bar and restaurant



Must present All American RV Parks membership card for discount: • 50% off regular rate. Rate is good for 4 consecutive days. • Discount is not valid on Holiday weekends, during rallies or special events. • Located 4 miles from Pahrump, 60 miles Northwest of Las Vegas, and 50 miles from Death Valley.

Preferred RV Resort

1801 Crawford Way
Pahrump, NV 89048
775-727-4414

Email: reservations@preferredrv.com

Website: www.preferredrv.com



FROM I-15 in Las Vegas, take Exit 33 (Blue Diamond Pahrump Highway 160). Proceed northwest 55 miles. At Crawford Way (Gold Town Casino), Turn right and drive 1,000 ft to Resort.

• 270 full hookup sites (100 pull throughs) • Heated, year-round pool (covered with a dome in the winter) • Indoor spa, Exercise room • Free WiFi access • Planned daily activities, Special events • Manned, 24-hour front gate • Woodworking, crafts, sewing & stained glass shops • Billiards, Clubhouse • Multiple laundry/shower facilities • Horseshoe pits, shuffleboard • Playground & picnic areas, Barbecue area



Must present All American RV Parks membership card for discount: • 50% off regular rate. Rate is good for 14 days, anytime of the year.

Apple Hill Campground

647 Maple St
Bethlehem, NH 03574
603-869-2238

Email: applehill@roadrunner.com

Website: www.applehillcamping.com



FROM I 93, Exit 40, Right on 302E, 3 miles to the center of town, left at 142N for 1 mile.

• 35 Full Hookup Wooded RV sites that can accommodate RVs up to 40 feet • Playground • Showers & restrooms • Metered propane, dump station • Laundry facilities • General Store • Local attractions that include Old Man of the Mountain Historic Site, Cannon Mountain, Aerial Tramway, The Flume, Moore Dam, Mount Washington, Cog Railway, Bretton Woods Ski Area, Loon Mountain, Attitash, Santa's Village, Story Land, Cark's Trading Post, Six Gun City, Lost River and two 18 Hole Golf Courses



Must present All American RV Parks membership card for discount: • 50% off regular rate. Rate is good for 5 days, Sunday through Thursday. Apple Hill is located 30 miles from St. Johnsbury, VT and 70 miles from Concord, NH.

Cozy Pond Camping Resort

541 Battle Street
Webster, NH 03303-7707
603-428-7701

Email: info@cozypond.com

Website: www.cozypond.com



FROM the South: Take I93 North to I89 North (mile marker 35), Take Route 103 exit 7 off of I89, Go right off exit and proceed 0.8 miles to Route 127, Turn left on to Route 127 and proceed 3.2 miles the campground is on the left. FROM the North: Take I93 South to exit 22, Follow Route 127 South approximately 19.6 miles and the campground will be on the right.

• Full Hookups (Water, Electric, Sewer) • Tent and RV Sites - Overnight to Seasonal • Free Hot Showers, Laundry • Rec Hall & Pavilion • Country Store: Groceries, Snacks, Sundries • Propane Filling Station • Dump Station • Free Cable TV, Free WiFi Internet Access • Pet Friendly NH Campground with plenty of walking room as well as a dog pond for swimming • *Big Rigs Welcome



Must present All American RV Parks membership card for discount: • 50% off regular rate. Rate is good for 2 days. • Located 1 1/2 hrs from Boston, MA, 2 1/2 hrs from Springfield, MA, and 2 1/2 hrs from Burlington, VT and Providence, RI. • Open Mother's Day weekend to Columbus Day.

Newfound RV Park

792 Mayhew Turnpike
Bridgewater, NH 03222
603-744-3344

Email: newfoundrvpark@gmail.com

Website: www.newfoundrvpark.com



NORTHBOUND: I93 take Exit 23. Go W 104 for 6 mi (DO NOT TURN ONTO RIVER ROAD). Take N 3-A for 5 miles. Park Entrance is on Right.
SOUTHBOUND: I93 take Exit 26. Go W 25 to S 3-A. Park Entrance is on Left.

• 38 Large, Level Gravel Sites and 6 Brookside Sites • All RV sites are Full Hookup including TV, WiFi and your choice of 20, 30 or 50 amp service • Clean, Private Bathrooms & Showers • Laundry Room • Picnic table and fire ring • Camp Store offers Ice, Firewood, Goodies, Coffee/Tea and a few supplies • Rec Hall with Ping Pong, Pool Table, Give 'n Take Library and an ongoing Jigsaw Puzzle • Playground with enclosed sandbox • Enclosed Dog Park • Owners live onsite to give you 24/7 security



Must present All American RV Parks membership card for discount: • 50% off regular rate. Rate is good for 4 days. • Rate valid Monday-Thursday. • Discount is not available during events. • Pet Friendly. • Open from May 15th to October 15th, but the phone is answered all year long.

Seven Maples Campground

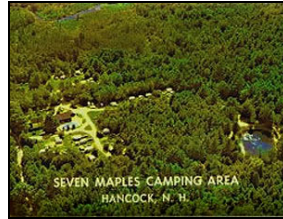
24 Longview Road
Hancock, NH 03449
603-525-3321

Email: info@sevenmaples.com
Website: www.sevenmaples.com



Upon reaching the Hancock town line (on Rt-202), Take a right on Rt-137 South. Follow Rt-137 South for 3 Miles. Take a right at the Seven Maples Campground sign onto Longview Rd. The camp entrance is just beyond the single lane bridge on your Left.

• On site services and supplies, including LP gas, ice, wood, campground store, and dump station • On site owners, with enforced quiet hours • Group camping area with kitchen and dining facilities • 1 and 2 person Kayak rentals • Playgrounds, shuffleboard, half court basket ball • Rec hall with video games, pool table, air hockey, pinball, and darts • Crystal clear heated swimming pool • A Private Stocked Rainbow Trout Fishing Pond • Free High Speed Wireless Internet Access - WiFi • Seven Maples Is "Pet Friendly



Must present All American RV Parks membership card for discount: • 50% off regular rate. Discount rate is good for 2 day. Discount invalid weekends or Holidays.

Hidden Valley Ranch RV Resort

12100 Hidden Valley Rd NW
Deming, NM 88030
575-546-3071 • 888-546-3071

Email: hiddenvalleyrvranch@gmail.com
Website: www.hiddenvalleyrvranchrv.com



FROM I-10 at Deming, go north on Hwy. 180 3 miles, and turn right onto Keeler Rd. Go 1.4 miles, and cross cattle guard (road becomes gravel). Go 1.3 miles, turn right at HVR sign. Go 5.5 mile to ranch.

• 160 total RV sites can accommodate RVs up to 65 ft. • 30 & 50 amp service • All pull-throughs, full hook-ups • Restrooms, showers & laundry • BBQ, picnic area, rec. room, library, video library • Mail service • Horseshoes • Air, propane, ice • Wi-Fi available, courtesy phone • ATV on approx 7,000 acres of land, walking, and hiking trails, rockhounds paradise, birdwatching, Indian petroglyphs, pool table, darts, planned activities, horseback riding, and horse boarding available.



Must present All American RV Parks membership card for discount: • 50% off regular rate. Rate is good for 7 days. • Handicap accessible. • No tenting. • Pets welcome. • No credit cards. Check or cash only. • Rates include tax. Based on 2 people. \$2.23 additional charge per extra person per night.

Hidden Valley RV
844-B State Hwy 333
Tijeras, NM 87059
505-281-3363 • 800-326-2024
Email: info@hiddenvalley-rvpark.com
Website: www.hvrresort.com



Go 11 miles east of Albuquerque on I-40, take exit 178 to South Frontage Road, turn east, and the park entrance is at the east end of the Gas Station.

• 104 Sites, 65 pull-thru, 85 with full hookups • 20/30/50 AMP electric • Heated outdoor pool • Laundry facilities • Clubhouse, picnic area, playground • Hiking trails, basketball court, horseshoes • Local attractions: Turquoise Trail, Historic Old Town, Native American Pueblos, Albuquerque International Balloon Festival (Oct)



Must present All American RV Parks membership card for discount: • 50% off regular rate. Rate is good for 7 days.

Kiva RV Park and Horse Motel

21 Old Hwy 60 West
Bernardo, NM 87006
505-861-0693
Email: admin@kivarvparkandhorsemotel.com
Website: www.kivarvparkandhorsemotel.com



Located 25 miles North of Socorro and 45 miles South of Albuquerque. Take Exit 175 off I-25. The RV Park is on the Westside of the interstate.

• Kiva RV Park has 35 full hookup RV sites, all pull-thrus • 40' wide over 40' long, leave your towed vehicle hooked up • 30/50 amp service • 2 comfort stations with showers • Wireless internet • Club house • Horses welcome • Ice, pool table, wheel chair accessible • Laundry • Tent sites • Located 25 miles from Socorro and 45 miles from Albuquerque, 1/2 miles from Bernardo Wildlife Reserve • Winter Snowgeese, Sandhill Cranes, and Mexican birds • Owners live on the premises • Located on Old Camino Real



Must present All American RV Parks membership card for discount: • 50% off regular rate. Discount is valid for 2 days and up to 7 days based on availability. • Discount is not valid October 1st through October 15th. • Please visit website for reservation information. • Pets welcome. • RV Park is also a horse motel for people who travel with horses.

Low-Hi RV Ranch

1795 O'Kelley Road SE
Deming, NM 88030

575-546-4058 • 888-569-4478

Email: lowhivranch@yahoo.com

Website: www.lowhivranch.com



Located at the intersection of O'Kelley Road and Country Club Road, about 4 miles south of Deming, New Mexico. FROM East: I-10 Exit 85, go west on Pine Street to Country Club Drive. Then go south 4 miles to O'Kelley Road, and turn right onto O'Kelley Road. FROM West: I-10 Exit 82A, go south 4 miles on Hwy 11, and turn left onto O'Kelley Road for 1 mile to LoW Hi RV Ranch.

• Wireless Internet available at your site • Quiet and natural surroundings • Long pull-thru sites • Electric 20, 30, 50 amps • Dump station • Vehicle & mini-storage • Clean hot showers, Quality Laundromat • Recreation Hall with TV, Library, Videos and games



Must present All American RV Parks membership card for discount: • 50% off regular rate. Rate is good for 2 weeks. • Discount is not valid during the LOW rallies which are held at the Ranch twice a year, please call for dates. • The RV Ranch is located at 4200' elevation, the range of temperature is conducive to comfort in all seasons.

Midway RV Park

18 Yakima Rd
Dexter, NM 88230
575-622-0531

Email: suedennis88@hotmail.com

Website: www.midwayrvparknm.com



Located seven miles south of Roswell on US 285.

• 26 total RV sites, can accommodate RV's up to 45' • Partial hookups & full hookups • 20/30 amp • Back-ins, pull-thrus • Wi-Fi • Restrooms & showers • Dump station • Laundry facilities • Club house • Ice • Handicap accessible • Horseshoes • RV storage.



Must present All American RV Parks membership card for discount: • 50% off regular rate. Discount is valid for 7 nights. • Pets must be on leash with owner in attendance. • Horses welcome. • *Plus tax. \$2 additional for full hookup site. \$2 additional for electricity.

Pendaries RV Park

Park Place #3, Hwy 105
PO Box 697
Rociada (Pendaries), NM 87742
505-454-8304
Email: rvrociada2@yahoo.com
Website: www.pendariesrvpark.com



FROM I-25N to Exit 347 left under bridge .8 mile to Mountain View Rd. Right to 7th Street (518). 9 miles to Sapello. Left at Gas Station (Rt 94). Follow signs to Rociada, Pendaries (turns to 105). Go to Pendaries RV Resort. 10 miles located on right.

• 50 total RV sites accommodate double slide outs • 48 have full hookup with 30 and 50 amp hookups available • Sites are 55 ft. to 75 ft. long • Propane and Dump station on site • Free WiFi on Site • Outdoor group facilities and an indoor pavilion • Satellite TV in clubhouse • Bathhouse, laundromat • 2 shuffleboard courts, horseshoes • Fishing nearby, 18 hole golf course and driving range across the way • Friendly pets welcome



Must present All American RV Parks membership card for discount: • 50% off regular rate. Rate is good for 3 nights, Monday through Thursday only. • Discount not valid holidays. • Cash or checks only. • Reservations required. • Limit 2 pets per RV. • No tents or wood fires. • \$3 additional for 50 amp service. • Located 20 miles N of Las Vegas, NM. 85 N of Santa Fe and 140 miles N of Albuquerque.

Rusty's RV Ranch

854 The RV Way
Rodeo, NM 88056
575-557-2526
Email: info@rustysrvranch.com
Website: www.rustysrvranch.com



FROM I-10 exit 5 on Hwy 80, 23 miles on right (south). Campground is 1/4 mile north of Hwy 9, and Hwy 9 dead ends at NM Hwy 80. Located 6 miles north from Rodeo on the left.

• 40 Total sites • 200□ Pull-Thrus can accommodate any size RV • 30/50 Amp & Lava Rock Fire Pits • Free Wireless Internet • Office, Store, Club House (Rusty's Round up Room) • Comfort station & Laundry • Pet friendly & Dog Run • 360° Mountain Range Views • Garden w/Koi Pond & a Duck Pond • Park where Swim Spa is located • Outdoor Canopy where Lawn games are played • Walking track around the whole park • Local attractions: Art Galleries, Trail Riding, Astronomy, Birding, Hiking, Hunting and Geo Caching about 20 in the area • Located 6 miles from Rodeo, NM and 9 miles from Portal, AZ



Must present All American RV Parks membership card for discount: • 50% off regular rate. • Discount is good for 3 days. • 3 night minimum stay required • Longer stays based on availability. • \$5 additional for electricity. • Rusty's RV Ranch is located on the border of New Mexico and Arizona, and is just six miles from Rodeo, NM and 9 miles from Portal, AZ.

Turner Inn & RV Park

503 E Broadway
Mountainair, NM 87036
505-847-0248

Email: reservations@turnerinnandrvgpark.com

Website: www.turnerinnandrvgpark.com



DRIVE SOUTH on I-25 to the Bernardo exit. Drive EAST on US 60 until you reach Mountainair. We are located on US 60 at the east end of town. We are about 1/4 mile on the left beyond the "Willard 13 miles" sign. DRIVE EAST on I-40 to the second exit in Moriarty. Drive SOUTH on NM 41 until you reach US 60. Turn right on US 60 and drive about 11 miles until you reach Mountainair. We are the first business you'll see as you enter town.

• The RV Park has 27 Sites, 20 with 30 amp Sites, 7 with 50 AMP Sites • Water, Sewer, Electric • Free Wifi • Shower and Restroom Facilities • Laundry facilities • Tent Camping • The Inn has 13 rooms • 2 Cabins



Must present All American RV Parks membership card for discount: • 50% off regular rate. Rate is good for 2 days, Sunday through Saturday, weekends and holidays • \$5 per day for power hookups. • Rates do not include tax. • Pets are welcome, but must be on a leash and cleaned up after.

Western Sky's RV Park

16201 Las Alturas Drive
Vado, NM 88072
575-233-2573

Website: www.westernskysrvpark.com



FROM I-10 Eastbound: Take Exit 155, turn left over the interstate and turn right onto Frontage Road. Park is located 1/4 mile on the left. FROM I-10 Westbound: Take Exit 155, turn right and take the first right onto Frontage Road. Park is located 1/4 mile on the left.

• 72 RV sites that can accommodate any size RV • All sites have electric/water/sewer • 15/20/30/50 amp service • Dump station • 1 bathhouse with 3 showers and 3 commodes each • Laundry • Free Cable TV & Wi-Fi hotspot • Internet hook-up and courtesy phone available in office • Large nature trail with dog walk • Basketball, BBQ, horseshoes, picnic area, playground, volleyball • Ice & propane • RV storage • Tent sites available • View of Oregon Mountains, large shade trees at every site • Located close to Red Lava Cliff Volcano, 15 miles from Las Cruces, NM and 20 miles from El Paso, TX



Must present All American RV Parks membership card for discount: • 50% off regular rate. Discount is valid everyday with an unlimited stay. • Visa, MC and Debit Cards accepted. • Pets welcome. • *Rate + Plus tax for 30 amp service, \$1 more for 50 amp service • Open year-round.

Blue Mountain Campground

3783 Rte 32
Saugerties, NY 12477
845.246.7564

Email: bluemountaincampground@gmail.com

Website: bluemountaincampground.com



Located 6 miles from Saugerties and 10 miles from Catskill. From Route 87, take Exit 20, go 5 miles North to Route 32. The Campground is located on the left.

• Picnic Tables • Fire Rings • Clean, Full-Service Bathrooms • Free Hot Showers



Must present All American RV Parks membership card for discount: • 50% off regular rate • Rate is good for 2 days

Camp Bell Campground

8700 NY-415
Campbell, NY 14821
607.527.3301

Email: Info@campbellcampground.com

Website: www.campbellcampground.com



From Corning via I-86 Northbound. Head south on Pine St/RT-414 toward E Market St □ 285 ft. Turn right at RT-352 W □ 1.5 mi (4 mins) Take ramp onto I-86 W / RT-17 W/Southern Tier Expy □ 8.1 mi (8 mins) Take Exit 41 to CR-333 toward Campbell □ 0.1 mi Turn right at CR-333 0.5 mi (1 min) Turn left at RT-415 □ 0.6 mi (1 min)

• Water • 20 Amp Electric Service • Picnic Table • Fire Ring (Firewood Available) • Cable TV Available • 30 Amp Electric Available • 60 Foot Heated Pool • Large Recreation Hall • Playground • Well-Behaved Pets Welcome • Onsite laundry with modern appliances for your use



Must present All American RV Parks membership card for discount: • 50% off regular rate • Rate is good for 4 days • Not valid holidays • Not valid Watkins Glen Race weekend (call for details) • Not valid any weekends in July • \$5.00 30 Amp • \$3.00 Cable TV

Champs Campground And RV Park

1 N Main St
Whitehall, NY 12887
518.499.5055
Email: snjservice@aol.com



Located 10 mi from Lake George, NY and 25 mi from Rutland, VT.

Heading North: I-87 to exit 20, Left at the light, Right at 149 which will be the 1st light, follow 149 to Ft Ann. At the light in Ft Ann, left onto Rt 4 follow into Whitehall to Clinton Street, turn Right, continue downhill, Left on to Main Street.

Heading South: I-87 exit 21, Left at end of ramp. Right at Route 9 which will be 1st light. Follow Rt 9 to Rt 149, Follow 149 to Ft. Ann at light in Ft Ann, Left onto Rt 4 follow into Whitehall to Clinton St which is after 2nd light in Whitehall turn Right, continue down hill, Left onto Mail Street.

• Full hook-ups on every site • 50/30-amp service • cable • Wi-Fi • water and septic • A clubhouse for games music and live entertainment, equipped with a restaurant that serves breakfast, lunch and dinner, all in house sit down dining • Also a new 32ft. entertainment RV for movie nights and big sporting events, that are shown on three jumbo flat screens with surround sound.



Must present All American RV Parks membership card for discount: • 50% off regular rate • Rate is good for 4 days

Doubleday Campground

7489 State Hwy 80
Cooperstown, NY 13326
607.547.2896 • 518.894.5566
Email: abner@doubledaycampground.com
Website: doubledaycampground.com



Located 55 miles from Albany & 85 miles from Syracuse. From the south (Binghamton) take I-88 E to exit 17N to RT 28 N. Continue into Cooperstown to RT 80. Take Left turn & continue for approximately 9 mi. From the west (Toronto, Buffalo, Rochester, Syracuse) Travel east on I-90 (NYS Thruway) to exit 30 (Herkimer/Mohawk). Travel south on Rte 28 for 12 miles, turn left onto Rte 80 south & continue 1 mile.

• We have 100 sites for RV, Trailer, and Pop-Up camping • 25 sites have water and electric • 75 have water, electric, and sewer • Cable TV is limited throughout the campground • Our pull through sites are concentrated together for large traveling groups for up to 40 units



Must present All American RV Parks membership card for discount: • 50% off regular rate • Rate is good for 3 days • No weekends or holidays • Reservations required • Please mention AARV when making reservations • Not valid Hall of Fame Induction weekend at the end of July

Niagara Hartland RV Resort
2383 Hartland Rd.
Gasport, NY 14067
716-795-3812 • 800-571-4829
Website: www.niagarahartlandrv.com



FROM Gasport: go north on Main St., Gasport Rd. 6 miles, turns into Hartland Rd. From Rt. 18: go south 4 miles on Hartland Rd. From 104: 3.4 miles north on Hartland Rd.

• 50 Amp Service Full Hook Ups • Club House • Store • Pull Throughs • Fishing • Paddle Boats • Walking and Bike Paths • Laundry Facilities • Game Room • Playground • Dump Station



Must present All American RV Parks membership card for discount: • 50% off regular rate, two (2) day minimum stay required, no maximum if space is available • Electric is metered, \$5 per day cash deposit required • Credit cards accepted for space rent • Reservations recommended

Swan Bay Resort
45615 State Route 12
Alexandria Bay, NY 13607
315.482.7926
Email: manager@swanbayresort.com
Website: www.swanbayresort.com



Easy on/off Highway access. Located off I-81 North at the Alexandria Bay/Rt.12 North exit (Exit 50N). The Resort & Marina at Swan Bay is located on the left just after the Price Chopper parking entrance.

• Marina facility... 100+ slips • Boats over 30' ft. welcome too • Inside/outside cold and heated storage • 5 Cottage rentals • Pontoon Boat sales and rentals • Kayak sales and rentals • Bike sales and rentals • Playground • 120+ full service sites... • Dog Park • Gas firepit area with Adirondack Style Chairs • Park Model sales/rentals • Big Rig friendly • Expansive grassy play / event area • Free wifi • Waterfront pavilion tent • Gated property



Must present All American RV Parks membership card for discount: • 50% off regular rate • Open from May 1 to Oct 31 • Not Valid During Peak Season • Only valid on Park View Sites • Discount applies to full rack rate • Must call and mention AARV Club at time of reservation • Cannot be combined with other discounts/special offers • Charges apply for additional people based on site max

Twin Ells Campsites
255 La Plante Rd
West Chazy, NY 12992
518.493.6151
Email: twinells@msn.com
Website: www.TwinElls.com



Interstate 87 exit 40 follow weaterly, directional signs, West on Rt. 456, south on Rt 22, Northan O'Neil Rd. West on La Plante Rd.

• Large sites 50X65 • Fully grassed • Full hook ups • 30-50-amp service • 50 AMP pull thrus • Large 24X40 swimming pool • Large childrens play ground • 2- Step One climb & slides (2 sizes) • Large swing • Baby swings • Balance beam • Bench slide/swing • Covered seating area • Deluxe dollhouse • Jungle gym • Our own version of FOLF - frisbee golf - continuing expansions planned. • The lobster pot (large enough for kids to climb in & climb on • Kids tetter Totter • Kids size rockin chipmunk • Adult height basketball 1/2 court • Tetherball • Equipment loans: basketballs, volleyball, softball, bats, horseshoes, folf discs & darts • Recreation hall • Pool table • Kids lounge for gaming with free wifi • Ping pong table • Air hockey table • Laundry Facility • Bathroom with coin operated hot showers • Baseball field • Golf chipping green • Small store: bagged ice, soda, ice cream, and penny candy • Free garbage disposal and recycling • Firewood available for sale • Propane filling station • Free park wide WI-FI



Must present All American RV Parks membership card for discount: • 50% off regular rate • Rate is good for 5 days • Sunday - Thursday nights • Extensions granted depending on availability • Season: May 1 - Columbus Day

Cartoogechaye Creek Campground

91 No Name Rd
Franklin, NC 28734
828-524-8553
Email: vhatch0818@aol.com
Website: www.franklin-chamber.com/cartoogechaye/



FROM intersection of 441 and 64 go west 6.2 miles. The four- lane changes to a two-lane, across the bridge, first left.

• 77 total RV sites on 23 acres • Can accommodate motorhomes up to 40 ft. • 30 & 50 amp service • Pull-thrus, back-ins, full hook-ups, partial hook-ups • Dump station • Wi-Fi • Bathrooms, showers, laundry room • Picnic area • Storage • Fishing • Monthly and seasonal rates available • Rental units are available at a 10% discount • ☐Modem Friendly☐ • Tent Camping



Must present All American RV Parks membership card for discount: • 50% off regular rate. Rate is good for 1 day. • Discount is valid for one night and additional nights \$15.00. • Please call to check availability November to March. • Pets welcome. • *Rates are for 2 people, \$1.00 for additional people. \$1.00 extra for 50 amp. \$1.00 extra for air conditioning. • Campground is open April 1st to October 31st.

Dickens RV Park

2501 Corinth Rd
Moncure, NC 27559
919-776-1220

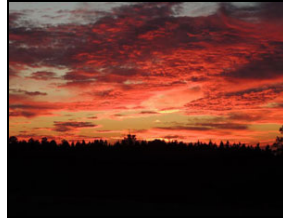
Email: kdicke1@windstream.net

Website: www.dickensrvpark.com



FROM North on US 1, take exit 81, then turn right. At stop sign, turn left on Old US 1 Hwy. Take first right on to Corinth Road. Go 2.5 miles on Corinth Road. Dickens RV Park will be on the left. FROM South on US 1 take exit 81, then turn left. At stop sign, turn left on Old US 1 Hwy. Take first right on to Corinth Road. Go 2.5 miles on Corinth Road. Dickens RV Park will be on the left.

• Quiet, rural atmosphere with 108 total RV sites and can accommodate RV's up to 60ft • Full hookups, pull-thru sites, and 30/50 amp service • WI-FI, ice • Laundry facilities:RV storage • New bath house • Secure (owner lives on-site)



Must present All American RV Parks membership card for discount: • 50% off regular rate. Rate is good for 5 days. • Open year-round.

Foothills Family Campground

1661 Hogan Rd
Forest City, NC 28043
828-245-4064

Email: campingfanatics@bellsouth.net

Website: www.foothillsfamilycampground.com/



FROM Jct. Hwy. 74 (Exit 178) and Hwy. 221. Go 7 1/2 miles south on Hwy. 221, then one mile west on Hogan Road. Entrance is on the right. FROM Spartanburg take 85 to 221 (Exit 78) travel 17 miles north to Hogan Rd, turn left. Park is 1 mile on right. Our area is not GPS friendly, please follow written directions to park.

• RV sites can accommodate RV's up to 50 feet • 8 tent sites • 0/50 amp metered sites • Pull-through and back-in sites • WiFi • Recreation room • Swimming pool, basketball, playground, ping pong, horseshoes, volleyball • Hiking trails, fishing pond • Laundry facilities, propane, store • Pavilion with BBQ grills in quiet country setting with trees.



Must present All American RV Parks membership card for discount: • 50% off regular rate. Rate is good for 2 days. • Rate not valid Sunday through Thursday or Holiday weekends. • Rate is for 2 adults/2 children, \$4 additional per person. • 50amp is \$5 per day. • Cash only. • Campground is open year-round.

Four Oaks RV Resort
4596 US Highway 301 S
Four Oaks, NC 27524-9238
919.963.6675

Email: info@fouroaksrvresort.com
Website: www.fouroaksrvresort.com



1 mile north of Four Oaks, 5 miles South of Smithfield

• Free Wi-Fi throughout the campground • Free Continental Breakfast • Free Ice • Free Cable TV • 50/30/20 amp hook-ups at all sites • Big Rig friendly • Long sites • Showers and Restrooms available • Propane filling • Picnic pavilion • Weekend Activities



Must present All American RV Parks membership card for discount: • 50% off regular rate • Rate is good for 6 days

Hominy Valley RV Park
1550 Pisgah Hwy (Hwy 151)
Candler, NC 28715
252-205-2772

Email: Israel@myglnc.com
Website: www.hominyvalleyrvpark.com



FROM Westbound on I-40: Take Exit 44 and turn right onto Hwys. 19/23 south. Go 3 miles and turn left onto Hwy 151 S., park is a road side park 5 miles on your right. Just past the school (Slow down in curve). FROM Eastbound on I-40: Take Exit 37 and turn left at light onto Hwys 19/23 north. Go 3 miles and take right at stop light onto Hwy 151 south.

• 5 total RV sites can accommodate RVs up to 45ft. (40X70sites) • Full hookups, 30/50 amp service • Mountain view with lookout deck. • Park was built NEW in 2005! • Private valley setting, 3 miles off Blue Ridge Parkway. • Conveniently located between Asheville and Cherokee. Located 5 miles from Enka and 10 miles from Asheville.



Must present All American RV Parks membership card for discount: • 50% off regular rate. Rate is good for 3 days. • Discount is not valid on holidays or special events! • Call ahead or email to check availability. • Pets welcome. • \$2 additional charge for cable sites. • Campground open year-round

Orchard Lake Campground

460 Orchard Lake Rd

Saluda, NC 28773

828-749-3901

Website: www.orchardlakecampground.com



Orchard Lake Campground is 6.3 miles from Interstate 26. Take I-26 to exit #59. Follow the signs into and through downtown Saluda. Cross the bridge over the railroad tracks and turn left immediately onto Erwin Street. Go 1 block and turn right onto Greenville St., which becomes Mountain Page Road. Go 3.5 miles and past Mountain Page Baptist Church to Mine Mountain Road. Turn left at the sign and go 1.5 miles to campground entrance.

• 130 total RV sites, can accommodate RVs up to 60ft, 30/50 amp hook ups • Pull throughs, and full hook-ups • Dump station: Bathhouses with hot showers • WI-FI, store, ice • Laundry facility • Golf course, pool table, horseshoes, basketball, ping pong, canoeing, clubhouse, hiking, volleyball, playground, picnic area, biking, shuffleboard, hiking, fishing, boating, nature trails, and fun activities • RV storage • No smoking • Campground is pet friendly, modern friendly, and security patrolled • Located 4.5 miles from downtown Saluda



Must present All American RV Parks membership card for discount: • 50% off regular rate. Rate is good for 1 night. • Discount is not valid during holidays. • Pets are allowed but must be kept on a leash and cleaned up after. • Credit cards accepted. • *Rates are for 2 adults and 4 children, or 4 adults. \$5.00 for each additional person. • Open April through October.

Pine Lake RV Resort

32482 Hill Creek Rd

Wagram, NC 28396

901-281-3319 • 800-746-3505

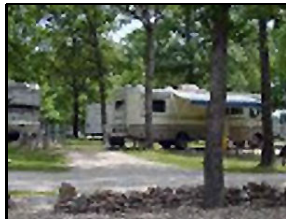
Email: Antqlady2@aol.com

Website: www.pinelakervresortnc.com



FROM Laurinburg: 15 miles north on 15-501, two (2) miles east on Hillcreek Road. FROM Aberdeen: 10 miles south on 15-501, two (2) miles east on Hillcreek Road. FROM Wagram: 7 miles northwest on Hillcreek Road.

• Fifty-six pull through campsites with water sewer and electric hookup • 34 fully furnished units available for daily, weekly, or monthly rates • Primitive camping sites • Horse stables • 39-bed bunk house are also available • 50 foot swimming pool • Hiking • 5 acre stocked fishing pond on site



Must present All American RV Parks membership card for discount: • 50% off regular rate. Rate is good for 4 days. • Rate is valid for 4 days, Sunday through Thursday and is subject to change. • Discount is not valid on holidays, weekends or special events (2014 US Open, Major Golf Events and NASCAR races - Rockingham) and not valid for tent camping or rental units. • *\$2.00 additional charge per day for bathhouse use (family of four). • Open year-round.

Pride RV Resort
4394 Jonathan Creek Rd
Waynesville, NC 28785
828-926-1645 • 800-926-8191
Email: info@pridervresort.com
Website: www.pridervresort.com



Located 25 miles from Asheville and 17 miles from Canton. From I-40, take Exit 20, and go one mile south on US 276.

• RV hook-ups, lodging in Park Models or Cozy Cabins • Clean restrooms • Cable TV • Free wi-fi • Swimming pool, hot tub • Putt Putt Golf, Horseshoes • 2 Catch and release ponds, trout fishing in creek • Club house, pavilion • Laundry facilities



Must present All American RV Parks membership card for discount: • 50% off regular rate. Rate is good for 7 days. • Discount is not valid during holidays. • Credit Cards accepted. • Pets welcome. • *\$5 additional per night for creekside sites (Row G). • Open year-round.

River Camp USA
2221 Kings Creek Rd
P.O. Box 9
Piney Creek, NC 28663-0009
336-359-2267
Email: info@rivercampusa.com
Website: www.rivercampusa.com



NORTHBOUND: From junction US-221 and NC-113 go North 4 miles, left on South Fork Church 1/2 mile, left on Kings Creek 2 miles. Park entrance of left BEFORE river. **SOUTHBOUND:** NOTE: DO NOT TAKE US-58 East from Abingdon VA. From Marion, Virginia at junction I-81 and VA-16 follow VA-16 South to US-58 East in Volney continuing on US-58 East approx. 5 miles, then right on VA-93 South. Go 1-1/2 miles to NC-113 South. Continue 1 mile to crossroad then right on Piney Creek School Rd. 1 mile, left on South Fork Church 1/2 mile, right on Kings Creek 2 miles. Park entrance on left BEFORE river.

• River Camp USA has 60 total RV sites that can accommodate RVs up to 45 ft. • Riverfront sites • Full hookup pull-thrus (up to 60 ft.) • 20/30/50 amp service • Located on the New River with canoe, kayak, tube rentals, riverbank and boat fishing • Separate tent area: Volleyball, picnic shelter, country store (food, beer, wine, bait, ice) • Laundry, and Wi-Fi (\$) • Playground area • Pets welcome • Local Attractions: New River, Blue Ridge Pkwy, Mt. Rogers and Mt. Jefferson Parks, Shatley Springs, cheese factory, the Frescoe church paintings, antique shops, restaurants and so much more.



Must present All American RV Parks membership card for discount: • 50% off regular rate. River Camp is open April 15th - November 1st (weather permitting). • Discount is valid Sunday - Thursday only. • Weekends require a minimum stay of 2 nights at the full rate. • Management may limit length of stay in July. • Reservations required. • Discount does not apply during holiday weekends and the week of 4th of July. • Pets must be on leash. • Quiet hours 9:00 p.m. to 8:00 a.m. • *Rates are for 2 people, \$2 additional per child and \$5 additional per adult. • \$2 additional for 30 amp service, and \$4 additional for 50 amp service. \$2 per day for WiFi.

Riverhouse Acres Campground

4744 Pisgah Dr
Canton, NC 28716
828-646-0303

Email: rvrhouse@bellsouth.net

Website: www.riverhouseacrescampground.com



Coming West on I-40 - Turn off at East Canton exit 37. Turn left, go to the light and turn right. Follow 19/23 into Canton to Route 110. (at the river) Turn left, and then follow this approximately 5 miles. Campground will be on the right, across from Silver Bluff Village. Coming East on I - 40 - Turn off at Canton Exit 31. Follow Route 215 to US 19/23, turn left, go 4 traffic lights to Route 110 (Pisgah Dr.), turn right and go approximately 5 miles. Campground will be on the right, across from Silver Bluff Village. From Franklin, North Carolina on US-441 - Take US-441 North to US-74 East, take Exit 98, turn right go to light and turn left. Go 5 lights to Pigeon Rd. and turn right. Follow this 8 miles to Route 110. Turn left and campground is 1/3 mile on the left.

• 20 River front sites with beautiful river view • All sites have septic, water and 30/50 amp electric hookups • Free Wi-Fi • Fires in approved areas. • Tent sites available and a private bathhouse



Must present All American RV Parks membership card for discount: • 50% off regular rate. Rate is good for 2 days, Monday through Thursday. • Discount can be applied toward a 2 day, a week or month stay. • Discount is NOT VALID during holidays, holiday weeks, or the month of October. • Tent sites are available but no discount will be honored. • Discount is given on a space-availability basis. • Reservations are accepted. • *Rate is based on two people, \$2.00 charge for each additional person per night. • Leashed pets are ok. You must clean up after your pet, a \$20.00 charge will be applied if you fail to do so.

RV Resort at Carolina Crossroads

415 Wallace Fork Rd
Roanoke Rapids, NC 27870
252-538-9776

Email: rvresort@embarqmail.com

Website: www.rvresortatcc.com



FROM North bound on I-95 take exit #171 to top of the ramp and turn right on Hwy 125 south, go .1 mile and turn left onto Carolina Crossroads Blvd, go .1 mile and stay right at the traffic circle onto Wallace Fork Road, go .5 mile park is on right. FROM South bound on I-95 take exit #171 to top of the ramp and turn left onto Hwy 125 South, go .2 mile and turn left onto Carolina Crossroads Blvd, go .1 mile and stay right at the traffic circle onto Wallace Fork Road, go .5 mile park is on right.

• Brand new RV Park / Campground with 85 sites • All sites are pull-thrus, full-hookups with 50/30 amps, 65 to 70 feet long and 35 feet wide • Dump Station, Sewer Hookups • On Site Repairs • Free Cable TV, Phone, Internet Access, Free Wifi • Hot Tubs • Putt-Putt Course, Outdoor Pool Table • Group Discount • Playground, Picnic Area • Club/Meeting Room • Credit cards accepted.



Must present All American RV Parks membership card for discount: • 50% off regular rate. Discount is valid for 1 night Monday through Thursday • Not valid on weekends, holidays, and special events. • Open year-round! Check-in: 1PM / Check-out: 12PM. • Pets Welcome but must be kept on a leash and cleaned up after. • Located less than a mile from I-95, just south of the Virginia border.

Sands Of Time Campground

40523 North End Rd
Avon, NC 27915
252.995.5596

Email: sandsoftimecamping@embarqmail.com

Website: www.sandsoftimecampground.com



Avon is 6 miles north of Buxton home of the worlds tallest lighthouse, 18 miles north of Hatteras village. Avon is centrally located giving you easy access to all areas of the Island. Only 1 mile from beach access ramp 34 - 2 miles from ramp 38. Beach is approximatly a 7-10 minute walk from park.

- 57 Full Service Sites • 30-50 Amp. • Tent Sites /Water & Electric & Shade • Dry Sites • Cottage Rental • Hot Showers • Clean Restrooms • Laundry • Lighted
- Fish Cleaning Table • Free Cable TV • Free WIFI



Must present All American RV Parks membership card for discount: • 50% off regular rate • Rate is good for 7 days • Not valid during holidays

Sundowner RV Village

42 Sundowner Circle
Hayesville, NC 28904
828-389-3241

Email: jsundowner@brmeme.net

Website: www.sundownerrvillage.net



FROM Atlanta, GA: I-75 west to 575 north. Travel 575 to 76 north, and then take 76 to 17 north. Go north on 17 to 69, and the Sundowner RV Village is on McDonald Road (on the right). FROM Asheville, NC: 74 west to 64, and then go west to Hayesville. Then turn left onto 69, and go 3 miles to McDonald Road (on the left).

- Sundowner has 50 total RV sites that can accommodate RVs up to 36 ft. • 50/30 amp service, full hook-ups, pull-thrus • Cable TV, Wi-Fi • Dump station • Clean, new bathhouse & laundry room • Recreational hall • Covered pavilion • Storage area for RVs, boats, etc. • Next to Lake Chatuge and Chatuge Golf Course • Located approx 95 miles from Atlanta, GA. 80 miles from Asheville NC, and 80 miles from Chattanooga, TN



Must present All American RV Parks membership card for discount: • 50% off regular rate. Rate is good for 2 days per week. • Discount is not valid October 1st - March 31st, reservations are suggested. • Cash or check only. • Sundowner caters to adult campers - no children, please. • Well behaved pets welcome. • *Rates are based on 2 adults. • Open year round!

The Haven Campground

3790 31st Ave NE
Harvey, ND 58341
701-324-2820

Email: nfrbl@gondtc.com

Website: www.havencampground.com



12 miles North of Harvey, ND. On Hwy 3, then 1 mile East and 1 mile North.

• 8 sites with sewer, water and electrical hook-ups at each site • Fieldstone fire pits with available wood and several woodstoves for outdoor cooking • Scenic view with lots of rolling hills and lots of trees and shrubbery for wind protection • Wildlife is abundant with deer, partridge, grouse and pheasants • Waterfowl and other birds such as mourning dove, goldfinches and meadowlarks are prevalent • Large recreation area with horseshoe pits, volleyball net and biking • One very nice rental camper available, sleep 4-6, AC, and linens and kitchen utensils included • Pull in and park or make reservations • Nice sitting gazebo to visit in inclement weather • Pets welcome



Must present All American RV Parks membership card for discount: • 50% off regular rate. Rate is good for open days. • Discount is not valid on Holiday Weekends. • Open May until October. • Located 14 miles from Harvey and 30 miles from Rugby.

A1 - Twin Valley Campground, LLC

2330 Apollo Road SE
Carrollton, OH 44615
330-739-2811

Website: www.twinvalleycampground.com



Take State Route 43 to Bay Road. Campground is located at the corner of Bay Road and Apollo Road.

• Pets Welcome • Swimming Pool • Fishing • Laundry Facility • 50 Amp Service • Clubhouse



Must present All American RV Parks membership card for discount: • 50% off normal rate • Maximum 2 day discount per visit • Credit cards accepted • \$2.50 per day electric surcharge • \$4.00 per day electric surcharge for 50 amps • Discount not available on Holidays • Reservations preferred • Discounts for groups

Countryside Campground

2687 State Route 43
Mogadore, OH 44260
330-628-1212

Email: gtbrain@aol.com

Website: www.countrysidecampgrounds.com



FROM I-76, take Exit #33. Go south 3.5 miles. Park is located on the right side of the road. From SR 224, go north on 43 for 2.5 miles. Park is located on the left side of the road.

• Pets Welcome • Wireless Internet • Heated Swimming Pool • Fishing • Picnic Tables • Laundry Facility • Dump Station • 30 Amp Service • Clubhouse



Must present All American RV Parks membership card for discount: • 50% off normal rate • Maximum 2 day discount per visit • Cash only, no credit cards • Discount available Sunday through Thursday only • Discount not available on Holidays • Rate is for two people per site, each additional person, add \$2.00

Evergreen Lake Park

703 Center Road
Conneaut, OH 44030
440-599-8802

Email: camper@suite224.net

Website: www.evergreenlake.com



Take Exit 241 on I-90 Conneaut exit ¼ mile north, left at 1st traffic light, and follow the signs. Less than 3 minutes from the exit.

• Fishing • Golf • Horseshoes • Comfort Station • RV Parts • Recreation Room • Swimming • Game Room • Store • Snack Bar • Basketball • Shuffleboard • Volleyball • 50 Amp Service • Clubhouse



Must present All American RV Parks membership card for discount: • Discounted rate \$17 water/electric, \$20 full hookup • \$2 surcharge for 50 amp • Discount not available Friday and Saturday nights during July and August • Discount not available on Holidays • Electric heaters and hot water tanks are not permitted • Rates are based on 2 people for water and 30 amp service only • Additional charges for sewer, 50-amp, or A/C • Space available basis only • Reservations preferred

Ridge Ranch Campground

5219 State Road 303
Newton Falls, OH 44444
330-898-8080

Email: info@ridgeranchcampground.com

Website: www.ridgeranchcampground.com



Take Ohio Turnpike 80 to exit 209, after the tollbooth, turn right onto State Road 5, turn right onto State Road 534, pass over turnpike and turn left onto State Road 82, then left again at State Road 303, pass over the turnpike again. The Campground is on the left. (There are signs directing you once you get on 5)

• Fishing • Mini Golf • LP Gas • Laundry • Dog Swimming Area • Boat Rentals • Swimming • Game Room • Store • 50 Amp Service • Pavilions



Must present All American RV Parks membership card for discount: • 50% off regular rate, good for five (5) nights per stay • Reservations required • Space available basis only • Cash only, no credit cards accepted • Discount not available Friday and Saturday nights • Discount not available on Holidays • Discount not available for primitive camping

K River Campground

HC 66 Box 42
Moyers, OK 74557
580.298.2442

Email: manager@kriver.com

Website: kriver.com



We are 8 miles north of Antlers, OK, on Hwy 2. SET YOUR GPS TO MOYERS, OK, FRISCO ROAD, THEN PROCEED ANOTHER MILE UP HWY 2.



Must present All American RV Parks membership card for discount: • 50% off regular rate • Rate is good for 2 days • Not valid during 3-day holiday weekends

Long Lake Resort
35740 US HWY 59 South
Poteau, OK 74953
918-647-8140
Email: longlakeresortllc@yahoo.com
Website: www.longlakeresort.com



Located on the East side of Highway 59 South, 2 miles south of Poteau, OK.

• 34 paved RV Sites to accommodate any size RV as well as Cabin and Duplex rentals • The cabins are nestled in a secluded wooded setting • Banquet room and a pavilion are also available for groups • Private fishing trips at two of the private natural lakes, Long Lake and Terrell Lake • Free bank fishing with all lodging rentals • Horseback Riding - Bring your own horses to ride or call them to schedule one of the guided or specialty trail rides • Hiking Trail, Bonfires



Must present All American RV Parks membership card for discount: • 50% off regular rate. Rate is good for 2 days, valid Sunday through Thursday. • AARV Members not valid during holiday weekends. • \$2 additional for 50 amp service and \$5 for pull-throughs.

Onapa RV Park & Campground
Onapa Rd/# 1110 Rd
(Hc 60 Box 277)
Checotah, OK 74426
918-473-7219
Email: chris@onaparpark.com
Website: www.onaparpark.com



FROM I-40: Take exit 264 South on US Hwy 69 South. Go 3 miles to Onapa Road, bear right at end of ramp and go 500 feet to entrance of park on left. FROM US Hwy 69 North: 8 miles north of Eufaula. Go past Texanna Road to next exit. Exit Onapa Road turn left at end of ramp and go 800 feet to entrance of park on left.

• 24 sites with Full Hook-ups and are able to accommodate all HDTs, 5th wheels, travel trailers and motorhomes of all classes • Storm Shelter, Playground • Shower House and Laundry Room • Hiking Trails, Biking Trails, Picnic Areas • Sports Field and Game Room • Nearby: Lake Eufaula, Lake Onapa, Antique Shopping, Casinos, Eateries, Lake Eufaula Dam and ATV Trails.



Must present All American RV Parks membership card for discount: • 50% off regular rate. Rate is valid for 2 nights maximum. • Rates are for two people, \$5 additional charge for each extra person per night. • \$2.50 additional charge per night for 50 AMP service. • No swimming pool. • Park open year round. • Pets are welcome.

Pine Island RV Resort

32501 So 571 Road
Jay, OK 74346
918-786-9071

Email: pineislandok@gmail.com

Website: pineislandrvresort.com



FROM Tulsa, take I-44 to Afton exit. Take Hwy 59 South to Grove. In Grove, Highway 59 turns south at the second stoplight. Continue South through Grove to State Highway 127. At the 59/127 intersection turn right. Drive 5 miles to Zena. At the stop sign, turn right and follow signs to Pine Island RV Resort.

• 172 total RV sites, 30/50 amp service, and can accommodate RV's up to 40ft • Full hook-ups, pull through and back in sites • Tent camping, rental trailers, camper cabins • Showers and restrooms, laundry • Dump station • WiFi, picnic tables, fire rings, shuffleboard courts • Indoor/outdoor pools, heated pool • Store, ice, propane • Security, handicap access • Playground, clubhouse, game room • Tennis court, basketball, teen center • Fishing, boat ramp and dock, mini golf • Group activities and clubhouse pavilion



Must present All American RV Parks membership card for discount: • 50% off regular rate. Rate is good for 3 days 3 times per year.

RC'S Campground & Quick Stop

17537 NCR 3350
Stratford, OK 74872
405.207.9901

Email: cincoby@yahoo.com

Website: rccampground.com



Wynnewood Exit to Hwy 29 East. Turn North on 3300. Turn East on 1570. Turn on 3350. Go 1/2 mile East.

• 22 spaces available • Satellite TV available • Internet available • History making fishing • Horse trails • Seasonal Hunting • Shopping just miles away!



Must present All American RV Parks membership card for discount: • 50% off regular rate • Rate is good for 2 days • No weekends or holidays • Monday through Friday

Red River Ranch RV Resort

19691 US Hwy 77
Thackerville, OK 73459
580-276-4411 • 800-568-7837
Email: redriverranch@brightok.net
Website: www.redriverranchrvresort.com



FROM South on I 35 from Oklahoma, take Exit 5 for OK 153, turn right on OK 153 West, Turn Left on US 77 South. FROM North on I 35 from Texas, take Exit 1 for US 77 North, turn left on US 77 North, Turn right to stay on US 77 North.

• 200 RV Spaces • Clubhouse • Fire Pits • Horse Shoe Pit • Laundry facilities • Mini-Golf • Dish Network • Pool Tables • Nearby: Windstar World Casino & Gainesville Outlet mall



Must present All American RV Parks membership card for discount: • 50% off regular rate. Rate is good for 7 days. • \$2.00 additional per day charge for 30 or 50 amp service. All RV's must park on RV site rated for their unit.

Sawyer RV Park

289 E 2040 Rd
Sawyer, OK 74756
580.326.0830
Email: oregondon123@yahoo.com
Website: sawyerrvpark.com



We are located 2 1/2 miles north of HWY 70, just off HWY 147 North of Sawyer, in beautiful Southeastern Oklahoma.



Must present All American RV Parks membership card for discount: • 50% off regular rate

Twin Lakes RV
14148 County Road 1554
Ada, OK 74820
580.436.3800

Email: twinlakesrv@live.com
Website: twinlakesrvparkada.com



Twin Lakes is located one mile south from Ada on Highway 1 and 20 miles from Sulphur. Exit Latta off Highway 19 to Highway 3 bypass. Then take Latta Road at Exit of Highway 3. Go 2 blocks and park is located on the East side of the road.

• Always friendly and helpful service • Propane on site • Free wireless internet and cable television • Open year round • 15-30-50 amp sites available • Laundry, showers, and storm shelter all on site • Within 1 Mile of Ada City limits • Close to Casinos, Theater, Family Fun Center and dining



Must present All American RV Parks membership card for discount: • Rate: 50% off regular rate • Rate is good for 2 days • No weekends or holidays • Monday through Thursday

Chinook Bend RV Resort
2920 Siletz Hwy
Lincoln City, OR 97367
541-996-2032

Email: ChinookRV@chinookbend.com
Website: www.chinookbend.com



FROM Lincoln City: Take Highway 101 South approx. 1 mile. Turn left onto Highway 229 and drive east for 3 miles. Turn right at Big Red Barn (stop here to register). 1/2 mile to resort.

• 67 total RV sites, can accommodate any size RV • Full and partial hookups, pull throughs available, 15/20/30/50 amps • Wi-Fi, Cable, phone, new bathrooms & showers • Laundry, firepits, clubhouse, game room, general store • Ice, BBQ, boating, boat ramp, hiking/biking trails, horseback riding, ATV • Boat docks, picnic area, handicap accessible • Fitness center, playground, pitch-n-chip golf, horseshoe pits, volleyball • Doggie trail/run, LP, propane, recycling center • Security, fishing, full bait shop, kayaks and rental boats, jet skis • Trailers, Cabins, and Park Models for rent • RV and boat storage



Must present All American RV Parks membership card for discount: • 50% off regular rate. Discount rate is good for 2 days. • Open year round, weather permitting. • Reservations are suggested. • Threaded sewer required. • Pets accepted but must be on leash at all times. • Credit cards accepted. • *Rates are for five people. \$3.00 per night for each additional person. • \$2.50 per night for Cable TV. \$2.00 electric surcharge. • Located 3 miles from Lincoln City, 5 miles from Depoe Bay and 20 miles from Newport.

Lone Mountain RV Resort & Tipi Cpg

169 Lone Mountain Rd
O'Brien, OR 97534
541-596-2878

Email: reservations@lonemountainrv.com

Website: www.lonemountainrv.com



FROM I-5: Take the US-199/ REDWOOD HWY exit, EXIT 55, toward OREGON CAVES/ CRESCENT CITY. Merge onto GRANTS PASS PKWY. Stay STRAIGHT to go onto US-199 S/ REDWOOD HWY. (35.8 Miles). Turn right on Lone Mountain Rd. End at 169 Lone Mountain Road, O'Brien, OR 97534. FROM Crescent City: Turn LEFT onto US-101 N/ REDWOOD HWY. Merge onto US-199 N/ REDWOOD HWY via EXIT 794 toward TO I-5/ GRANTS PASS (Crossing into OREGON). (41.6 Miles) Turn LEFT onto LONE MOUNTAIN RD.

- Lone Mountain RV has 38 total RV sites and can accommodate any size RV • All sites are full hookups • Back-ins, pull thrus, 20/30/50 amp • WiFi, Cable TV
- Dump station • Tent sites • Restrooms, showers, handicap access, laundry • Ice, gas, propane, store • BBQ, picnic area • ATV, biking, nature watching, golfing, hiking, fishing, horseback riding, horseshoes • Restaurant



Must present All American RV Parks membership card for discount: • 50% off regular rate. Rate is good for 4 nights, Monday - Thursday. • Discount is valid November - April. • Rate is for 2 Adults & 2 Children, \$5/night per additional Adult or Child. • Cash/Visa/Debit only, no checks (4% credit card bank fee will be added to all credit card transactions). • Pets welcome. • Open year-round. • Located close to major cities such as Grants Pass, Crescent City, Medford, and Ashland.

Newberry RV Park

52660 S Hwy 97
La Pine, OR 97739
541-536-7596

Email: lapinerv@gmail.com

Website: www.newberryrv.com



NORTHBOUND (from south - driving towards Sunriver): Park is North of downtown LaPine, just past Gordy's Truck Stop and Dairy Queen. SOUTHBOUND (south of Bend/Sunriver): The park is located on the left before entering LaPine & Wikieup Junction.

- Full hook-ups, including water, sewer, and 50 amp electric service • Luxurious RV sites, pull-thrus available • Free WiFi access and cable TV • Hot showers and convenient laundry facility • Picnic areas, a pet area • Convenient RV storage for seasonal campers • Nearby attractions include fishing, boating, hunting, hiking, and sightseeing



Must present All American RV Parks membership card for discount: • 50% off regular rate. Discount is valid for one night, Monday through Thursday. • Discount not valid during holidays. • Credit card accepted.

Shamrock Village RV & MHP

4531 Franklin Blvd
Eugene, OR 97403

877-877-1004 • 541-747-7473

Email: manager@shamrockvillagepark.com

Website: www.shamrockvillagepark.com



Use I-5 Exit 189: FROM SOUTH exit go straight 1.5 mi.(R) to Springfield/McKenzie Hwy. Park will be on the right. FROM NORTH take exit then turn left over I-5. Get in right lane; go straight approx. 1 mi on the right.

• Shamrock Village RV is located along side the Willamette River with level parking on pavement • 37 total RV sites, can accommodate RV's up to 40ft • 30 full hookup & pull thru sites, 30/50 amp service • 8 shaded river sites that have water and 30-amp electric only • Modern bath and laundry facilities with a small recreation hall with a pool table, dartboard and TV • Dump station • Cable TV, Wi-Fi • Handicap access • BBQ, picnic area, fishing, and recycling center



Must present All American RV Parks membership card for discount: • 50% off regular rate. Rate is good for 3 nights.:Discount is valid October thru March, Sunday thru Thursday. • Reservations are recommended, but drive-ups are welcome. • No tent sites. • Pets allowed. • Credit cards accepted. • *Tax included. Rates are for 2 people, \$2.50 for each additional person. • Located between Downtown Eugene and Springfield.

Surfwood RV And Campground

75381 Hwy 101

Reedsport, OR 97467

541-271-4020

Email: surfwood123@gmail.com

Website: www.surfwoodrvcampor.com



Located at Mile Marker 215 on Hwy. 101 in Reedsport, OR Located .05 mile South of Reedsport and .05 mile from Winchester Bay.

• 141 RV sites including 66 Pull Through site and 22 Tent Sites • Free WiFi, Fish and Crab cleaning station • Laundry facility, restroom with showers • Tennis and basketball courts • Playgrounds, boat storage and much more



Must present All American RV Parks membership card for discount: • 50% off regular rate. Rate is valid for 3 days. Discount is not valid in July, August, holidays or special events (call for details). • Reservations suggested. • Tenters welcome. • Pets allowed, breed restrictions.

Tri City RV Park
187 N Old Pacific Hwy
Myrtle Creek, OR 97457
541-860-5000

Email: info@tricityrvpark.com
Website: www.tricityrvpark.com



I-5 Exit 103 on to Riddle Bypass Rd. Travel East 1/4 mile. Turn North (sharp left) on Old Pacific Hwy; approximately 1.2 miles, located on left hand or West side of Old Pacific.

• 70 total RV sites, 39 back-ins, 31 pull through sites which can accommodate RVs up to 45' • 20/30/50 AMP, full hookups, water/sewer • Cable TV, Wi-Fi • RV necessities store, propane • RV storage • Laundry facility, and clean restrooms w/hot showers • BBQ, picnic area: Pet walking area for your convenience



Must present All American RV Parks membership card for discount: • 50% off regular rate. Rate is good for 4 days. • Located 20 miles South of Roseburg and equal distance from Medford and Eugene.

White's Haven Campground & Cabins

3058 Cathers Run Rd
Clarington, PA 15828
814-752-2205

Email: elkhornrun@windstream.net
Website: www.whiteshavencampground.com



Exit I-80 at exit 78, Brookville, PA. Take Route 36 north 13 miles.

• 137 total RV sites can accommodate up to 45' RVs • 3 pull throughs, 65 full hook-up sites • 66 water and electric sites • Campground offers hot showers • Coin operated laundry & store • Biking, hiking, fishing, nature trails and boating • Campground is handicap accessible and pet friendly • Next to Cook Forest State Park and near Clear Creek State



Must present All American RV Parks membership card for discount: • 50% off regular rate. Rate is good for 1 day. • Discount valid Sunday through Thursday night. Not accepted on holidays. • Rates are for 4 people, \$3 for each additional person. • Visa & MasterCard accepted. • Located 13 miles from Brookville, PA.

Betty's RV Park
142 Boettjer Rd
Beech Island, SC 29842
803.827.1956

Email: boettjer@comcast.net



Conveniently located to Aiken, SC, North Augusta, SC. (15 miles) and Augusta, GA (5 miles). Located on HWY 125 (Atomic Rd) about 3 miles east of Beech Island and 5 miles from SRS Plant.



Must present All American RV Parks membership card for discount: • 50% off regular rate • Rate is good for 2 days

Elliott's Landing & Campground
2010 Elliott's Landing Rd
Rimini, SC 29125
803-452-5336

Email: riminisan@ftc-i.net

Website: www.elliottslandingandcampground.com



FROM Columbia take 378 towards Sumter, go to 261 intersection and turn right at stoplight, go about 12 miles until you see the Rimini sign. At the Rimini sign, Turn right onto Camp McBoykin Rd- go to Rimini, cross over RR Tracks and bear to the right at the fork and Go straight. Go about 1 mile, Cross over Millpond bridge and turn right at Elliott's Landing and Campground sign.

• 47 RV sites can accommodate RVs up to 40ft • Large pull through sites • Full hookups • 30/50 amp service • Wi-Fi • Dump stations • Showers and restrooms • General store • Picnic tables • Fishing, boat ramp, boating, canoeing, 300ft. fishing pier • Birding sites on property • Horse stables available for overnight boarding



Must present All American RV Parks membership card for discount: • 50% off regular rate. Rate is good for one day. • Discount is not valid Friday, Saturday and during holidays. • Credit cards accepted. • Small pets allowed on leash and must be cleaned-up after. • *Rate is for 2 people, \$3.00 for each additional person. • \$3.00 electric fee per day. • Open year-round.

Pine Acres Campground

205 Duke Dr
Aiken, SC 29801
803-648-5715

Email: pineacres@gforcecable.com



FROM I-20: Exit #22, and go south on Hwy 1 towards Aiken. Go 4.8 miles and Pine Acres is on the left. From Aiken off 118 Bypass: go north on Hwy. 1 for one mile, and the campground is on the right.

• 40 total RV sites with full hookups (newly renovated hook-ups with more improvements on the way) and cable • WI-FI available • Sites can accommodate RV's up to 40 feet in length • 30/50 amp service • Most sites are pull throughs • Men and women facilities with showers and stalls • Laundry room and tent sites are available • Manager lives on site



Must present All American RV Parks membership card for discount: • 50% off regular rate. Rate is good for 2 days. • Discount is NOT valid during Masters Week - Golf Tournament (first week of April). • Credit card and Membership number required at the time of making reservations. • Visa, Mastercard, Discover and American Express accepted. • Pets must be kept on leash! • *Rate includes cable T.V. Rates are for 2 people, \$2.00 for each additional person per day. • Located 1 mile from Aiken and 15 miles from Augusta, GA.

Camping 109 RV Park

14144 SD Hwy 109
Big Stone City, SD 57216
605-862-7650

Email: camping109@aol.com



FROM Big Stone City (Hwy 12), go north on Hwy 109 approx. 3.3 miles. RV Park is located on the east side of Hwy 109.

• Total of 40 RV sites and can accommodate RV's up to 60 feet • Sites have 30 and 50 AMP service • Pull thru and back in sites • Full hook ups with water, sewer and power • Fire rings, laundry facility and showers • Access to a boat launch ramp located on Big Stone Lake • Swimming Beach 3 miles away



Must present All American RV Parks membership card for discount: • 50% off regular rate. Rate is good for 3 days. • Weekly, monthly, and yearly rates available. • Located 3.3 miles from Big Stone City, SD and 4.5 miles from Ortonville, MN.

Hill's RV Park and Campground

608 South Main St
Plankinton, SD 57368
605-770 0300

Email: nancyahill@yahoo.com

Website: www.hills-rv.com



FROM Interstate I-90, Exit 308. Intersection of US 281 and Interstate 90.

• 35 Pull-Thru RV Sites with 20/30/50 amp • 65' Pads with Easy Access, sewer • Bathhouses available • Outdoor Swimming Pool • Laundry facilities, Ice Machine • Pet friendly



Must present All American RV Parks membership card for discount: • 50% off regular rate. Rate is good for 2 days. • Open April to November, \$2 additional charge for 50 amp, \$10 additional charge for 50 amp October through November. • Located 90 miles from Sioux Falls and 250 miles from Rapid City.

Wyatt's Hideaway Campground

11144 SD Hwy 34
Belle Fourche, SD 57717
605-892-0600

Email: camping@wyattshideaway.com

Website: www.wyattshideaway.com



FROM EAST: I-90 exit 23 and go 15 miles west on Hwy 34. Wyatt's Hideaway is on the right immediately after crossing the river. FROM WEST: I-90 exit 10 and go north 9 miles to Hwy 34, then go east 2 1/2 miles. Wyatt's hideaway is on the left just before the river. FROM NORTH: Hwy 85 south to Hwy 34, then go east 2 1/2 miles. Wyatt's Hideaway is on the left just before the river. FROM SOUTH: Follow the directions from the west.

• 53 total RV sites • 47 with 30-amp and 6 with 50-amp • Campground can accommodate any size RV, pull through sites with full hookups • Free Wi-Fi • Hot showers, laundry facilities • Dump station • Picnic tables, campfire grills, ice • Fishing and swimming in the river • Kids playground and horseshoes for adults • Concession stand • 24 hour security • 13 tree covered acres on the river • Pet friendly



Must present All American RV Parks membership card for discount: • 50% off regular rate. Rate is good for unlimited days. • Discount is not valid the week before or during Sturgis Motorcycle Rally (call for dates). • Cash Only • Reservations accepted for 30-amp sites only and 50-amp sites are given on a first come, first serve basis. • All pets leashed/cleaned up after. • Discount rates are based on two people, \$3.00 additional charge for each additional adult. Children under age 12 stay free. • Campground is open from May 1st to September 30th.

Big Buck Resort

205 Sparks Rd
Hornsby, TN 38044
731-658-2246

Email: bigbuckresort@gmail.com
Website: www.bigbuckresorttn.com



FROM Memphis: Highway 64 East, 2 miles east of Hornsby turn left on Sparks Road FROM Jackson: Highway 45 South to 64 West for 10 miles, turn left on Sparks Road.

- 120 acre open grassy park • 100 RV sites can accommodate any size RV • Each site has picnic table, charcoal grills, 30 amp electrical hookup & water faucet
- Clubhouse with kitchen, lounge, video games, pool tables and large furnished deck overlooking the lake • Two stocked ponds • Cedar-lined restroom facility with showers • Free Wi-Fi • RV dump station • Swimming pool • Laundry house • Rifle range, trap range, driving range, hiking, 4 Wheel ATV trails & large playground with inflatables • Cabins for rent



Must present All American RV Parks membership card for discount: • 50% off regular rate. Rate is good for 2 days.

Made in the Shade RV Park

6878 Granville Hwy
Granville, TN 38564
931-653 4486

Email: madeintheshade@twlakes.net
Website: www.madeintheshadervpark.com



FROM I-40 EAST Big rigs exit 280. Hwy.56 at Baxter and go North to Highway 70N. Turn left (west) and come down to Hwy. 53 at Chestnut Mound. Turn right and come to Granville. Resort is located on the left past the city limit sign. A closer option. I-40 to take exit 268 Buffalo Valley but there are some twists and turns to get you to Highway 70N where you would go left (west) to Chestnut Mound then North into Granville. FROM I-40 WEST Take exit 258 at Gordonsville and go North on Hwy 53. At Carthage take the ramp to the right and you will be on both Hwy's. 53 and 70N going East. Come East to Chestnut Mound and Highway 53 will part with Hwy. 70 turning left (north) to Granville. Park is located on the left just after you enter town.

- 34 full service sites (1/2 are pull-thrus) • Large clean bathrooms • Free WI-FI • Laundry facilities • Large pavilion with big fireplace, enclosed in the winter:Swimming Pool, outdoor playground, access to the lake and camp store • Pets welcome on lead • Camp store • 6 tent sites with water/electric



Must present All American RV Parks membership card for discount: • 50% off regular rate. Rate is good for 2 days.

Pebble Mountain Family Campground

78 Pebble Mountain Circle
Chuckey, TN 37641
423-257-2120

Email: pebblemtn@gmail.com

Website: www.pebblemtn.com



FROM Interstate 81 take exit 23 onto Hwy 11-E towards Greeneville, TN. And go about 17 miles. Note: stay on 11-E (4 lane) do NOT take the 11-E business route. On 11-E go through Greeneville and after passing "Walmart" shopping center on the left, turn right at the traffic light onto Hwy 107 towards Irwin, TN. Go about 7 1/2 miles and turn right onto Horse Creek Park Rd. Go about 1 mile and turn right to stay on Horse Creek Park Rd. Go about a mile and turn left onto Dunham Rd. Campground is on the right about 2,000 feet after making left turn. Watch for our signs after leaving Hwy 107. FROM Interstate 26 take exit 37 @ Erwin, TN onto state route 81 toward Jonesborough, TN. Go about 7 miles and turn left onto Hwy 107 towards Greeneville, TN. Go about 13.5 miles and turn left onto Horse Creek Park Rd. Go about 1 mile and turn right to stay on Horse Creek Park Rd. Go about another mile and turn left onto Dunham Rd. Campground is on the right about 2,000 feet after making left turn. Watch for our signs after leaving Hwy 107.

• 41 sites either shady or sunny • 5 to 6 tent spots with fire ring & picnic table (no electric or water on site) • Showers • Swimming pool • Bathrooms • Small store • Enclosed Pavilion • 1/2 mile walking trail • Swings, badminton & volleyball net for children • Horseshoes for adults • Free Wi-Fi



Must present All American RV Parks membership card for discount: • 50% off regular rate. Rate is good for 2 days. • Open year-round. • Pet friendly, please be responsible.

AOK Camper Park

901 Spur 228
Amarillo, TX 79111
806-335-2677

Email: vincebritten@yahoo.com

Website: www.aokcamperpark.4t.com



FROM I-40: Take Exit 80 (Spur 228) turn north and drive approximately 1 block. FROM HWY 287: North on 228 for 1 mile. Camper Park is located on the right.

• 37 RV sites • Accommodate RVs up to 45' plus slides and tow cars • Most sites are pull-thru • full-hookups with 30 & 50 amp electricity • free wifi • Specializing in overnight sites for the weary I-40 cross-country traveler • Convenience store is located just across the street • Easy access to I-40



Must present All American RV Parks membership card for discount: • 50% off regular rate. Rate is good for unlimited number of days (first-come-first-serve basis). • *Rates are for 2 people, \$1.00 per day for each additional person over 12 years of age. \$1.00 additional for A/C or electric space heater.

Artesian RV Campground

8601 Hwy 290 W
Brenham, TX 77833
979-836-0680

Email: rollins@artesianrvpark.com

Website: www.artesianrvpark.com



Located on U.S. Hwy. 290 on the south side. Midway between Houston and Austin, seven miles west of Brenham.

• 50 total RV sites, can accommodate RVs up to 50' • 15/20/30/50 amp • Pull-thrus, back-ins, full hook-ups • Security • Clean showers, restrooms, laundry room • Dump station • Free WI-FI, phone • Game room, ping pong, basketball, biking, volleyball, playground, pool table, darts, club house • Nature watching, fishing, and a variety of yard games • RV storage • Tent sites



Must present All American RV Parks membership card for discount: • 50% off regular rate. Rate is good for an unlimited number of days. • Discount is not valid during antique shows, fairs, festivals, special events or with Travel Clubs. • Pets must be on a leash, cleaned up after and can't be chained up and left unattended. • Rates are for two people, \$5 for each additional person over 12 years old. • \$2 additional for 50amp service.

Black Rock Park

3400 State Hwy 261
Buchanan Dam, TX 78602
512.369.4774

Email: parks@lcra.org

Website: www.lcra.org/parks/Pages/black-rock-park.aspx



Travel west on TX-71 E: Turn north onto FM 2233; turn onto Ranch Road 2900; turn onto FM 1431 W towards Buchanan Dam; turn left onto TX 261 N/Lakeshore Drive & travel to the park road.

• Picnic Tables • Grills • Event Meeting Facility • Education and Recreation Activities • Swimming Areas • Pet Friendly • Watercraft Rentals • Horseshoes • Playground • Sand Volleyball Court • Ice Machine • Nearby Boat Ramp



Must present All American RV Parks membership card for discount: • 50% off regular rate • Rate is good for 4 days • Discount available Monday-Thursday from October through February only • Discount not available with any other discounts • Discount not available on holidays or special events

Chaparral RV Park

10th & Pecan St
PO Box 764

Blossing, TX 77419

361-404-1925

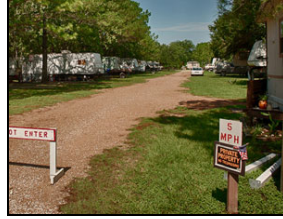
Email: info@rvtexas.us

Website: www.rvtexas.us



FROM Jct. SH 35 and FM 616: go west .25 mile on 616 to Avenue A. Then go south 7 blocks. FROM Jct. of 1862 and 616: go east 1 mile on 616 to Avenue A. Then go south 7 blocks.

• 32 level RV sites • Free Wi-Fi on all sites • Patios • Cable and phone hookups • Clean restrooms with showers • Laundry • Clubroom • Store • Fishing tackle • Quiet, secure, and only short driving distance to bay and gulf



Must present All American RV Parks membership card for discount: • 50% off regular rate, rate is good for 1 day • Pets must be on leash • *Rates are for two people

Circle T RV & MH Park

1820 Clay Tolle St

Mission, TX 78572-7208

956-585-5381

Email: circletrvpark@rgv.rr.com

Website: www.circletrvpark.net



We are located at the intersection of Expressway 83 & Business 83. Take the Inspiration Road Exit. The park is directly behind the Executive Inn.

• Entertainment shows • Musical jam sessions • Various crafting activities • A variety of card games • Billiards • Community pot-luck dinners • Exercise programs



Must present All American RV Parks membership card for discount: • 50% off regular rate • Rate is good for 2 days • Sundays thru Thursday • No holidays or weekends • \$5/day for 50 amp

Colorado River RV Park

1124 FM 969
Bastrop, TX 78602
512-581-1015

Email: bettiebuchanan61@yahoo.com

Website: www.coloradoriverrvpark.com



FROM Austin: Go east towards Bastrop 16 miles from the airport. Turn left at FM 1209 and go 5 miles to FM 969. Turn left, cross river bridge and park is on the left at the river. FROM Houston: Go west on I-10 approx. 75 miles. Take the Texas 71-W exit 695 to La Grange/Austin. Stay on 71 W for approx. 60 miles. Turn right on FM 969 approx. 5 miles. Cross river bridge and park is on the left at the river.

• 45 full hookup RV sites • Accommodate any length RV • 30/50 amp service • Free TV and Internet • Community lounge with TV • Pool (open May 1st - Oct 1st) • Fishing in the river bordering the park • Canoeing, kayaking, and picnicking along the Colorado River • Just a few minutes from LCRA's McKinney Roughs park with nearly 900+ acres of hiking and horseback riding trails • 6 miles from historic Bastrop • 22 from Austin - Texas State Capital



Must present All American RV Parks membership card for discount: • 50% off regular rate. Rate is good for 10 days • Discount is valid only with cash payment • Quiet time observed from 9pm to 7am • Dogs must be on leash or in your unit

Dixieland Retirement Community

1325 Dixieland Rd
Harlingen, TX 78552-3317
956-425-6707

Email: customerservice@dixielandretirementcommunity.com

Website: www.dixielandretirementcommunity.com



We are located in Harlingen, Texas just south of Valle Vista Mall From 77: Take the exit toward Harrison Ave/Tyler Ave, turn West (R) on Harrison Avenue, turn South (L) on Dixieland Road go approx. ¾ mile, we are located on the right just after Wells Fargo Bank From 281: Take US 83 east toward Harlingen to Tyler Ave/Dixieland Road exit, turn South (R) on Dixieland Road go approx. ¾ mile, we are located on the right just after Wells Fargo Bank

• Heated pool • Billiard tables • Shuffle-board courts • Bubbling heated spa • Recreation hall • Personal mail boxes



Must present All American RV Parks membership card for discount: • 50% off regular rate • Rate is good for 2 days • Sunday thru Thursday • No holiday or weekends • \$5/day for 50 amp

Eastgate MH & RV Park
2801 E Harrison Ave
Harlingen, TX 78550-5854
956-423-3137 • 800-499-3137
Email: eastgatervpark@rgv.twcbc.com
Website: www.eastgatervpark.net



We are located near the intersection of E. Harrison Ave & N. Ed Carey Drive (499). Take the Tyler Avenue exit.

• Entertainment shows • Musical jam sessions • Various crafting activities • A variety of card games • Billiards • Community pot-luck dinners • Exercise programs



Must present All American RV Parks membership card for discount: • 50% off regular rate • Rate is good for 2 days • Sundays thru Thursday • No holidays or weekends • \$5/day for 50 amp

Fig Tree RV Resort
8820 W Expressway 83
Harlingen, TX 78552
956-423-6699
Email: info@thefigtreervresort.com
Website: thefigtreervresort.com



Located 15 miles from Weslaco, & 45 miles from Brownsville. Easy access to US-83. From JCT. of W US-83 (Wxpy) & Atlas Palmas exit, go west 0.3 mile on N. Frontage Rd.

• 30-50 amp Texas sized sites • paved and lighted streets • landscaping and shade trees • Recreation Hall with Library and TV • Full Hook-ups • Heated Swimming Pool and Spa • Golf Practice Nets • Beautiful Landscape • Laundromat/Exercise Room • Limited Access Gate • Resort Wide Free WiFi • Showers and Large Restrooms • LP Gas Delivered.



Must present All American RV Parks membership card for discount: • 50% off regular rate • Rate is good for 2 days

Fort Clark Springs Camping World

80 Scales Rd
Brackettville, TX 78832
830-563-9340

Email: rvpark@fortclark.com

Website: www.fortclark.com



From San Antonio: Take Highway 90 West to Brackettville, & turn left onto Fort Clark Rd. the entrance to the gated community & resort of Fort Clark Springs.
From Drl Rio: Take Hwy 90 East to Brackettville & turn right onto Fort Clark Rd. To the entrance.

• 85 full hook-up sites • Cable TV • Wireless internet in the Day Room and in limited areas of the park • Telephone connections are available at each site • 4 bathrooms • Showers • Kitchen • Day room • Laundry room • Telephone • TV • library • Direct connection to the Internet



Must present All American RV Parks membership card for discount: • 50% off regular rate • Rate is good for 2 days • Monday - Thursday only • No Holidays • +\$2.00 for 50 Amp

Gulf Coast RV Resort

5175 Brooks Rd
Beaumont, TX 77705
409-842-2285

Email: hospitality@gulfcoastrvresort.com

Website: www.gulfcoastrvresort.com



Westbound on I-10: Take Exit 847 (Brooks Road/Major Drive), follow access road to Brooks Road ramp, take ramp, at stop sign turn left, go over I-10, park entrance is on the right. Eastbound on I-10: Take Exit 845 (Major Drive/Brooks Road), follow access road to Brooks Road ramp, take ramp, at stop sign turn right, park entrance on right. HINT: Follow the blue camping signs.

• 125 total RV sites • Accommodate RVs up to 70' • Exceptionally clean Restrooms & Showers • Sparkling pool with deck • Meeting room • Laundry • Picnic area, playground, horseshoes • Recreation room • 20/30/50 amps on all sites • All pull-through sites • Full hook-ups • Handicap access • Easy access to I-10 • All sites and roads are concrete • Free park TV • Free WIFI • Convenience store, ice, limited RV supplies • Complimentary continental breakfast



Must present All American RV Parks membership card for discount: • 50% off regular rate. Rate is good for 2 days • Discount is valid for 2 nights. Reservations are recommended • Discount not valid during YMBL Fair, call for details • Rate is not valid with any other discounts • Rates are for two people, plus \$6 additional per day per adult, and \$4 additional per day per child (children under 3 are free) • Rates subject to change.

Happy Oaks RV Park

4499 Hwy 90
Alleyton, TX 78935
979-732-5587

Email: happyoaksvrpark@yahoo.com

Website: www.happyoaksvrpark.com



FROM Houston: I-70 W, Exit 704, stay on feeder, park is on the right. FROM I-10 East: Exit 699, cross over Interstate, turn right onto feeder, park is on the left.

• 64 RV sites • Accommodates RV's up to 70' • Recreation room with Kitchen • Electric (15/20 Amp) • Electric (30 Amp) & (50 Amp) • Internet Access • Sewer • Water • Grills • Laundry • Open Year Round • Pet Friendly • Picnic Tables • Showers



Must present All American RV Parks membership card for discount: • 50% off regular rate. Rate is good for 3 days • Discount is not valid on weekends (Saturday & Sunday) and holidays • Pets must be kept on leash • Quiet time is after 10m

Hidden Valley RV Park

341 Bolner Ln
Del Rio, TX 78840
830-775-0045

Email: delriohiddenvalley@gmail.com

Website: hiddenvalleydelrio.com



Located 142 miles from San Antonio & 30 miles from Bracketville. From San Antonio take HWY 90 west to DelRio. Where Hwy 90 turns north & becomes Veterans Blvd, turn left & go over RR Bridge, stay right then go left at 2nd street- south main to end, veer right onto Bolner Lane, follow beautiful tree-lined Bolner Lane to the end, turn right into the wide entrance of Hidden Valley RV Park.

• 30'-40' wide x 100' long • Full hook-ups 50/30/20 • City water & sewer • Free WiFi & cable TV • Peace & quiet • Safety & security



Must present All American RV Parks membership card for discount: • 50% off regular rate

Hillcrest RV Park
5260 Highway 150 W
New Waverly, TX 77358
936-767-4101

Email: admin@hillcrestrvpark.com
Website: www.hillcrestrvpark.com



From I-45 northbound: take Exit #102 (New Waverly). Southbound: take Exit #103. Then travel east on Hwy. 150 - 13.7 miles. Resort entrance is on the right-hand side.

- Pull Through Spaces • Full Bath Facilities • Pool and Sun Deck • Air Conditioned Rec. Hall • Full Hook-Ups • Quiet and Serene • Level, Shaded Sites



Must present All American RV Parks membership card for discount: • 50% off regular rate • Rate is good for 14 days

Hwy 71 RV Park
931 Union Chapel Rd
Cedar Creek, TX 78612-3440
512-321-7275

Email: hwy71rvpark@yahoo.com
Website: www.hwy71rvpark.com



E-Z on E-Z off Hwy 71. 12 miles East of the Austin Bergstrom Airport on Hwy 71 and 9 miles West on 71 from Bastrop.

- 128 total RV sites • Accommodates RV's up to 70' • Meeting room • Instant Free Cable & WiFi • 20x60 heated pool (in season)



Must present All American RV Parks membership card for discount: • 50% off regular rate. Rate is good for 1 day • Discount is valid Sunday through Thursday, Discount is not valid with any other discounts • Call about special weekend rates • Cash or Check only • Rates are for up to two adults and two children, \$2 for each additional person

Lake Bastrop North Shore Park

375 Southshore Rd
Bastrop, TX 78602
512.578.4816

Email: parks@lcra.org

Website: www.lcra.org/parks/Pages/lake-bastrop-north-shore-park.aspx

Travel East on TX-71 E/Bastrop FWY; turn left / North onto TX-95 N / Jackson St; continue on FM 1441 E; turn right on park road.

• Boat ramp • Fishing Pier • Watercraft Rentals • Hiking Trails • Mountain Biking Trails • Swimming Areas • Education and Recreation Activities • Ice Machine • Group Pavilions • Pet Friendly • Aquatic Playground-Hero Water Sports • Picnic Tables • Grills • Shores Gift Shop • Snacks and Ice Cream



Must present All American RV Parks membership card for discount: • 50% off regular rate • Rate is good for 4 days • Discount available Monday-Thursday from October through February only • Discount not available with any other discounts • Discount not available on holidays or special events

Lake Bastrop South Shore Park

375 S Shore Rd
Bastrop, TX 78602
512.498.1922

Email: parks@lcra.org

Website: www.lcra.org/parks/Pages/lake-bastrop-south-shore-park.aspx

Travel East on TX-71 E/Bastrop Fwy; turn left/north onto TX-95N/Jackson Street; turn right onto TX 21 E/Chestnut St; turn left onto South Shore Road; turn right on the park road.

• Watercraft Rentals • Group pavilions • boat ramp • fishing piers • swimming areas • education and recreation activities • Horseshoes • volleyball court • playground • gift shop • snacks and Ice machine • Pet friendly • Wildlife viewing blinds • Hiking and Mountain biking trails • Grills • fire rings • Picnic tables • Event and meeting facility



Must present All American RV Parks membership card for discount: • 50% off regular rate • Rate is good for 4 days • Discount available Monday-Thursday from October through February only • Discount not available with any other discounts • Discount not available on holidays or special events

Lighthouse RV Park

18411 State Hwy 60 S
Bay City, TX 77414
979-863-7773 • 866-484-7773

Email: lighthousev@wildblue.net

Website: www.matagordatexas.com/lighthousev



FROM Hwy. 35 to Bay City, Texas to South 60. 15 1/2 miles, RV Park is on the left.

• 28 total RV sites, can accommodate RVs up to 45 ft • 30/50 amp service • Back-ins • WiFi/Satellite TV, Cable • Restrooms and showers • Laundry • Grocery and ice • Boating and fishing • Cabins and rental RVs • Tent sites • Restaurant • On-site liquor store • BBQ, picnic tables beautiful campground that encompasses nine acres • Open year-round



Must present All American RV Parks membership card for discount: • 50% off regular rate. Rate is good for 4 days • Discount is valid Monday through Thursday only • Discount is not valid during holidays and is not valid for cabins

Magic Valley Park

2300 E US Highway 83
Weslaco, TX 78596-8384
956-968-8242

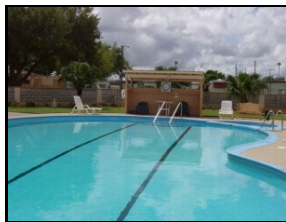
Email: customerservice@magicvalleypark.com

Website: magicvalleypark.com



From 77: Take US 83 West toward McAllen to FM1015 exit, turn South (L) to Business 83, turn West (R) go approx. 2 blocks we are located on the left
From 281: Take US 83 East toward Weslaco to FM1015 exit, turn South (R) to Business 83, turn West (R) go approx. 2 blocks, we are located on the left

• Morning Exercise Program • Bingo • Large Quilting Activity • Potluck Suppers • Zumba • Seasonal Craft Sales • Bird Watching • Painting Classes • Holiday Theme Activities • Line Dancing



Must present All American RV Parks membership card for discount: • 50% off regular rate • Rate is good for 2 days • Sundays thru Thursday • No holidays or weekends • \$5/day for 50 amp

Matagorda Bay Nature Park

6430 FM 2031

Matagorda, TX 77457

979.863.7120

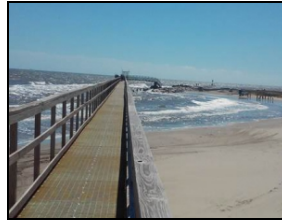
Email: Denise.matlock@lcra.org

Website: www.lcra.org/parks/Pages/matagorda-bay-nature-park.aspx



Travel south on TX-60; turn left onto FM 2031; travel 5.8 miles south to Matagorda Bay Nature Park entrance on the right.

• Boat Ramp • Fishing Piers • Wildlife Viewing Blinds • Event meeting Facility • Picnic Tables • Pet Friendly • Gift Shop • Ice Machine • Beach Chairs with Umbrellas • Wagon Rentals • Watercraft Rentals • Education and Recreation Activities • Horseback Riding • Snacks • Ice Cream • Mini Golf



Must present All American RV Parks membership card for discount: • 50% off regular rate • Rate is good for 3 days • Discount available Monday-Wednesday from October through February only • Discount not available with any other discounts • Discount not available on holidays or special events

Mobil Village RV Park

118 Freeman St

Aransas Pass, TX 78336

361-758-8367 • 361-758-4633

Email: waylor35@hotmail.com

Website: www.mobilvillage.com



FROM Corpus Christi: Take State Hwy 35 Northeast through Portland. Exit Business 35 to Aransas Pass to the northeast edge of Aransas Pass. Turn west (left) on Gile St. (Pepito's Mexican Restaurant) and go two blocks. Turn right on Freeman Ave. one block. FROM Rockport: Go South on Business 35 to the northeast edge of Aransas Pass. Turn west (right) on Gile Street (Pepito's Mexican Restaurant) and go two blocks. Turn right on Freeman Ave. and go one block.

• Adult park with 17 paved sites • Accommodates RV's up to 45ft • All sites have full hookups, 30-50 amp • Free Wi-Fi at your site • Picnic tables • Cable TV • Restrooms • Showers • Laundry • Club House with Shuffleboard, Pool Tables, Games • Recreation Hall • Planned activities from Nov-Mar • Bicycling • Located 12 miles from Rockport, 28 miles from Corpus Christi and 6 miles from sand beaches and Gulf of Mexico



Must present All American RV Parks membership card for discount: • 50% off regular rate. Rate is good for an unlimited number of days • Adult park with limited facilities for children • Pets are welcome - rules apply (NO Pitt Bulls or Rottweilers) • Rates are for two people. \$2 per day for each additional person • Reservations are requested • We do not accept credit cards. Cash or checks only • \$3.00 electric surcharge per day

Palm Resaca Park
100 Tangerine Blvd
Brownsville, TX 78521
800.667.6881 • 956.546.7423
Email: manager@palmresacapark.org
Website: palmresacapark.org



We are located in the traditional city of Brownsville, Texas; a culturally diverse and fast growing city located at the southernmost tip of Texas. At Palm Resaca Park you'll enjoy the beauty of the many graceful palm trees that surround us with relaxing resaca views. Our park is just minutes from shopping malls, grocery stores, restaurants, golf courses, bird watching, fishing, and the great Gladys Porter Zoo. It is a short drive to the beautiful sandy shores of South Padre Island. Most of all, you will enjoy being in the best climate of the United States.



Must present All American RV Parks membership card for discount: • 50% off regular rate • Rate is good for 2 days • Discount is on a space available basis • Reservations recommended but not required

Palmdale RV Resort
30910 State Highway 100
Los Fresnos, TX 78566
956-399-8694
Email: Customerservice@palmdalervresort.com
Website: palmdalervresort.com



Highway 77/83 South to Exit South Padre Island and Highway 100, Go 3.5 miles east on Highway 100. Entrance is on the right before the Stripes.

• Underground utilities • Laundry • Showers • Restrooms • Mail Service • Swimming Pool • Spa • Horseshoes • Recreation Hall • Shuffleboard • Library • Wi-Fi • optional Cable available



Must present All American RV Parks membership card for discount: • 50% off regular rate • Rate is good for 2 days

Quiet Texas RV Park I

3316 County Rd 541 # U
Hondo, TX 78861-5472
830-931-5777

Email: c5properties@yahoo.com

Website: qtrvpark.com



From HWY 90 take Avenue U South 1 1/2 miles and the Park is on the right.

- Quiet Texas RV Park is a short 45 minute drive to San Antonio to visit The Alamo, Missions and the famous Riverwalk.



Must present All American RV Parks membership card for discount: • 50% off regular rate • Rate is good for 2 days

Quiet Texas RV Park II

7620 CR 429

D'Hanis, TX 78850

830-931-5777

Email: c5properties@yahoo.com

Website: www.qtrvpark.com



If you are heading west on 90, when you arrive in D'Hanis turn right before the yellow blinking light on FM 1796. Go to the second street and take a left on CR 429. Go about 3 blocks and RV Park will be on the right.

- New in 2012 • 32 total RV sites (1/2 pull thrus, 1/2 back-ins) • All full hookups • big wide roads for easy access • FREE WI-FI • Sorry no restrooms or showers • No office so please call ahead to let the manager know that you are on the way and he will meet you



Must present All American RV Parks membership card for discount: • 50% off regular rate • Rate is good for 3 days

Rolling Fork MH & RV Park

213 Private Road 7330
Emory, TX 75440-4222
903-473-0991

Email: gnkrantz@verizon.net

Website: www.RollingForkRV.com



The Park is located on the West Fork, just north of FM 515 on CR 3330. From Emory take HWY 69 to FM 515 E (intersection is at the Brookshire's), left on 515 E, 6 miles to CR 3330, (look for Rolling Fork sign at intersection), left on CR 3330 (3 miles) to entrance (if you reach the lake you have gone too far). Turn right in front of the Rolling Fork sign into the park, leasing office is down the road on the left, in the large home with the large white front porch.

• Secluded & Secure RV Park on America's Premier Trophy bass Fishing lake • Lake Fork Deed restricted property to ensure a well-maintained & pleasant community • Secluded: Quiet cove off the main lake (Boardtree Branch) • Residential Park on a quiet country lane (CR 3330) • Peaceful park-like setting • Spacious lots • Secure: 1 entrance & exit • 24-hour security cameras • Park not visible from the road • on site management • Family-friendly environment: Family Owned & Operated since 1996 • Fishing pond on premises • Covered Pavilion and picnic area for gatherings • (Famous for our 4th of July party: potluck, live music, best fireworks on the lake!) • Services: Free WiF • Free Water/Sewer • Electricity individually metered • Full Service Laundromat with Bath House • Private Launch Ramp



Must present All American RV Parks membership card for discount: • 50% off regular rate • Rate is good for 2 days

Winter Haven Resort

3501 Old Port Isabel Rd
Brownsville, TX 78526
956-831-7755

Email: office@winterhavenresort.com

Website: www.winterhavenresort.com



FROM Texas Hwy 77/83, take FM 802 (Ruben Torres) go East 1.9 miles to Old Port Isabel Rd. Turn left on Old Port Isabel Rd. for 0.06 miles to the park.

• 29 paved RV sites all full hook ups • WiFi available • 24-hour Gated Park • Cable TV • Showers • Three Pools & Hot tub • Tennis, Shuffle board, Golf chipping green • 70 planned activities monthly • 2 laundry rooms • Large Clubhouse • This is a Bird Watchers Paradise



Must present All American RV Parks membership card for discount: • 50% off regular rate. Rate is good for 7 days • Discount applies only during the months of May through September • Discount is not valid January through April • Discount is on a space available basis • Reservations needed (to make reservations email receptionist@winterhavenresort.com) • Weekly and monthly rates are available, please see management for more details • Pets must be on a leash • *Rates are subject to change. Rates are based on two people.

HTR Moab

1536 S Mill Creek Dr
Moab, UT 84532
435.355.0355

Email: info-moa@htrresorts.com

Website: camphtr.me/3KXI45N



Stay on US 191 to Mill Creek Drive on the corner of Mill Creek & US 191.

- Clean Bathrooms, Coin Laundry, Community Kitchen, Deluxe Showers, Canoeing, Fly Fishing, Hiking, Kayaking, Star Gazing, Trail Biking



Must present All American RV Parks membership card for discount: • Please Contact HTR Moab for pricing or book stay here: <https://camphtr.me/3LmqUzS>

Wasatch View Estates

1700 West 2700 North
Ogden, UT 84404
801-782-4078

Email: wasatchview@silverkingco.com

Website: www.silverkingco.com



Take I-15 North to Exit 349 and drive East. Continue approximately 1/4 mile and park is located on the North side of the street.

- 100 RV sites can accommodate any size RV • Full hookups, Back-ins and 20/30/50 amp • Wi-Fi access • Restrooms with showers • Heated swimming pool • Basketball, Playground, Community Center • Rv storage



Must present All American RV Parks membership card for discount: • 50% off regular rate. Rate is good for 2 days. • Pets are welcome. • The park is located close to an I-15 exit and just minutes away from downtown Ogden, ski resorts or nearby golf courses. • Located approximately 40 miles North of Salt Lake City.

Groton Forest Road Campground

2654 VT-232

Marshfield, VT 05658

802.426.4122

Email: gfrcg09@gmail.com

Website: www.gfrcg09.com



Located 21 miles from Montpelier & Barre. From I-89 in Montpelier take exit 8 to Route 2 east, go approximately 21 miles & turn south right onto Route 232, go 2.5 miles to the park. From I-91 southbound, take exit 21 for route 2, go west 18 miles & turn south (left) on route 232 then go three miles to the park. From I-91 northbound take exit 17 for Hwy 302 & go 6 miles to route 232 & then go 6 miles to the park. Open May 15th through October 15th, weather permitting, \$2.50 additional for electricity.



Must present All American RV Parks membership card for discount: • 50% off regular rate

Onion River Campground

61 Onion River Rd

Plainfield, VT 05667

802.426.3233

Email: onionrivercampground@gmail.com

Website: onionrivercampground.com



The Campground is located off Route 2, 2 miles East of Goddard College, at 61 Onion River Road.

• 26 spacious sites for rigs • 21 with electric • 5 sites with full hookups • 23 acres of private tenting options • River access • Great fishing • wading • tubing • swimming • canoeing • Orchards and greenhouse (Join us for the harvest) • Trails • meadows • waterfall access • Bathhouse with free hot showers • Free dumping • Commercial party tent for functions • Picnic tables • Horseshoes • Badminton • Swing set • Playground



Must present All American RV Parks membership card for discount: • 50% off regular rate • Rate is good for 2 days • Valid Sunday thru Thursday

Skyline Ranch Resort

751 Mountain Road
Front Royal, VA 22630
540-635-4169

Email: rezskylinerranchresort@gmail.com

Website: www.skylinerranchresort.com



NOTE: It has come to our attention that some GPSs take you through unpaved and winding roads. Please make sure you are taking a route that brings you down Rt. 619 from Rt. 340. FROM East: Take I-495 to I-66 West, take Exit 13 at Linden, then turn left at the light. Take a right at the next light, Rt 55 West. Continue on Rt. 55 until you hit Rt. 340 South (left at light). You will then take a right at the third traffic light onto Rt. 619. We are ~6 miles on left. FROM North: Take I-81 South to Exit 300, then I-66 East. Take Exit 6 at Front Royal. Turn right at the light onto 340 South through town to Rt. 619, take a right. We are ~6 miles on left. FROM South: Take I-81 North to Exit 300, then I-66 East. Take Exit 6 at Front Royal. Turn right at the light onto 340 South through town to Rt. 619, take a right. We are ~6 miles on left.

- 128 total RV sites and can accommodate RVs up to 42' • All sites are full hookups with back-ins, and pull-through sites • 24 Hour Security • 8,000 sq. ft Clubhouse • Mini Golf • Petting Zoo • Restroom, Shower & Laundry Facilities • TV Room • Shuffleboard • Movies • Country Store, LP Gas • Camper Storage • Softball Field, Volleyball, Basketball • Picnic area, Playground • Stocked Fish Pool • Swimming Pool, Jacuzzi/Hot Tub • Video Game Room & Fitness Center • Horseback riding • Planned Activities on Holidays and much, much more!!!



Must present All American RV Parks membership card for discount: • 50% off regular rate. Rate is good for an unlimited number of days upon availability. • 50 amp service unlimited upon availability. \$5 extra charge for 50 amp service.

Alpine RV Park

60751 SR20
Marblemount, WA 98267
360-873-9002

Email: alpinervpark@hotmail.com

Website: www.aikenworld.com/alpine



GPS: 48°55'07.06"N, 121°42'30.67"W 20-Mile Post 107-108. 3 miles west of Marblemount, 40 miles from Sedro-Woolley, 87 miles from Winthrop, 122 miles from Vancouver, B.C., 113 miles from Seattle.

- WiFi included • Full hookups - 30 & 50 AMP • Bathrooms with hot showers • Laundry facilities • Big Rig friendly • Pull-throughs and Back-in sites • Tent sites • Dogs allowed on leach • Fire pits available • Biking • Great hiking in the National Park • 12 Miles to NPS Visitor Center • Fishing & Bald Eagles nearby.



Must present All American RV Parks membership card for discount: • 50% off regular rate. Rate is good for 2 days.

Boyer Park And Marina Almota Inn

1753 Granite Rd
Colfax, WA 99111
509.397.3208

Email: boyerpark@colfax.com

Website: www.boyerpark.com



From Spokane, follow US 195 S into Colfax. Bear right to stay on Main St. Turn right onto W Fairview becomes Almota Rd. Turn R onto Wa 194 W. Turn L onto Lower Granite Rd. Park is on the right approximately 1.5 miles before Lower Granite Dam.

• 30/50 amp electric (50amps \$5.00 extra) • Partial and full hook-up sites available • Sandy beach area for swimming • Paved bike and walking path along the river bank • Horseshoes • pool table • corn hole boards available for rent • Boat gas and pump-out station • Three lane boat launch ramp • restaurant and convenience store • coin-operated showers • laundry facilities • dump station • Pet-friendly



Must present All American RV Parks membership card for discount: • 50% off regular rate • Rate is good for Sunday - Thursday

Carlton RV Park @ Hwy 153

2252 Hwy 153

Carlton, WA 98814

509-997-0833 • 509-923-2949

Email: 153carltonrvpark@gmail.com

Website: www.carltonrvpark.com



FROM Wenatchee North on Highway 97 @ Pateros turn left onto Highway 153. Follow North approximately 23 miles to Carlton. Park on right directly after Methow River Bridge.

• 12 full hook up RV sites all W/E/S and back in • Shower/Restroom Building • 30 amp service • Dump station • (Winter no sewer or water) • Phone • Picnic tables • BBQ • Chapel services Sundays only at 10:30am • Free breakfast buffet at 9:30am, Sundays only • Hiking • Free Wi-Fi • Tenter's welcome!



Must present All American RV Parks membership card for discount: • 50% off regular rate. Rate is good for 2 days. • Rate is subject to change. • Reservations appreciated but required. Limited availability during holidays and hunting season, call ahead to check availability.

Dunes Beach Resort

3041 SR 109
Copalis Beach, WA 98535
360-289-3873 • 877-DUNES-RV
Email: olympicbeaches@aol.com
Website: www.olympicbeaches.com



From Aberdeen WA, take Hwy 109 for 24 miles, the Resort is on the left.

• 28 full hook-ups • Grassy tent sites with fire pits • Modern bathrooms • Common Room • Children's sandbox • Kite flying • Canoeing • Beach-combing • Horseshoe pit • Bird watching • Surf fishing and clam digging • Woods, meadows and creek for your outdoor enjoyment



Must present All American RV Parks membership card for discount: • 50% off regular rate. Rate is good for 14 days, 3 day/night minimum.

MarDon Resort

8198 Hwy 262 SE
Othello, WA 99344
509.346.2651
Email: info@mardonresort.com
Website: mardonresort.com



• Full Hookups • 30 & 50 amp • Gravel Base • Picnic Table • Fire rings • Summer Beach with lake Fun Island • Sports Court for Basketball • Grass Volleyball • 4 horseshoe pits • Playground • onsite restaurant • laundry facility • tackle/general store • marina with full boat moorage • sports center



Must present All American RV Parks membership card for discount: • 50% off regular rate • Rate is good for 10 days, per month • Not valid in July and August or major holiday and event weekends

North Country Christian Campground

737 Mary Ann Creek Rd
Oroville, WA 98844

509-485-2011 • 509-560-3409

Email: margolthompson@yahoo.com

Website: none



FROM Hwy 97, east toward Havillah, right past the Sitzmark Ski Area, right from that Hungry Hollow Rd, left on Mary Ann Creek Rd. From Hwy 28E, west past Chesaw, right on Mary Ann Creek Rd.

• Ping pong table in office • Laundry & shower by arrangement • Dial-up internet only • Only satellite cell service • Close to fishing in Mary Ann Lake • Lost of room to bicycle on dirt roads • Hiking • Lots of birds, deer and other creatures • Ranch across the road with animals • School across the road with play area • Pasture available • Historical areas & museum close by.



Must present All American RV Parks membership card for discount: • 50% off regular rate. Rate is good for an unlimited number of days.

Panorama RV Park & Storage

510 W 5th Ave

PO Box 250

Kettle Falls, WA 99141

509-738-6831

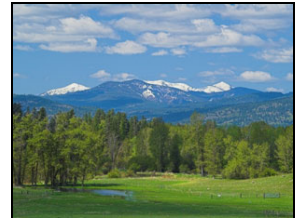
Email: panoramarpark@yahoo.com

Website: www.panoramarpark.com



On US 395 in Kettle Falls, turn south on Juniper St. Go one block and turn right on 5th Avenue into the park.

• 62 total RV sites • Can accommodate RVs 40 ft • 30 amp service • Full hookups, back-ins, pull thrus • Wireless Internet, Cable TV (\$) • New modern handicap restrooms & showers (4 comfort stations) • Laundry • Dump station • RV parts store • Large club house, ice, propane • Boat, RV and mini storage available • Rates are for 3 people, \$2.00 for each additional person • \$2.00 additional for 50 amp service.



Must present All American RV Parks membership card for discount: • 50% off regular rate. Rate is good for 3 days.

Winchester RV Park

8 W Curlew Lake Rd
Republic, WA 99166
509.775.1039

Email: relaxing@winchesterrvpark.com

Website: www.winchesterrvpark.com



From Canada: The best crossing for a straight shot is Danville. Enter US side at Danville, go 25 miles to W. Curlew Rd. and turn right. You also cross at Laurier on HWY 395 S to the HWY 20 JCT over Sherman Pass. Midway crossing will also bring you to HWY 21 off Customs Rd. From HWY 21 we are about 15 miles South, 5 miles past the airport, then turn right on W. Curlew Lake Rd. From Spokane: On 395N, continue heading north to Deer Park, Chewelah, Colville & Kettle Falls. Once through Kettle Falls, turn left at HWY 20 toward Sherman Pass & continue for approximately 37 miles to HWY 21 JCT. A Cenex gas station is on the corner. Turn right on HWY 21 toward Canada, drive 2.5 miles then turn left on W. Curlew Rd. Go 1/2 block to Winchester RV Park on the right.

• Paved RV pads • large lots/Full hook-ups • 30 & 50 amps • Camper cabins & tent sites • One rental RV available • Bathhouse with free showers • Laundry facilities • Gazebo • free use of propane BBQ grills • Fire pit • free firewood • LPG (propane) filling station • Wifi • small store selling ice, sodas, ice cream and RV supplies • Playground • Swing set • family games • horse shoes • ladder ball • croquet • giant checkers • Pet friendly • Daily, weekly, extended-stay rates



Must present All American RV Parks membership card for discount: • 50% off regular rate • Rate is good for 5 days • November-April Only • 2 night minimum

Fox Hill RV Park and Campground

E 11371 N. Reedsburg Rd
Baraboo, WI 53913
888-236-9445

Email: foxhill@foxhillrvpark.com

Website: www.foxhillrvpark.com



FROM I-90/I-94 take exit 92 (Route 12) east towards Baraboo. Proceed 2 miles on Route 12 to exit 214 (N. Reedsburg Rd.) At the bottom of the exit, proceed 3/4 way around the turn circle and head east on N. Reedsburg Rd. about 1.5 miles The RV Park entrance is on the right side of the road just after Fox Hill Rd.

• Free WIFI service • Camp store, Clean bath rooms • Heated swimming pool • Nature and hiking trails • Pedal carts, Kiddy train, Hay rides, 9 hole disc golf course • Playground, Basketball, Volleyball, Carpetball, Horse shoes • Giant chess and checkers and game room • Saturday evening ice cream sundaes, Sunday morning waffle breakfast • Fenced in pet play area • Golf cart rentals and a free shuttle to Ho-Chunk Casino • Two new basic cabins



Must present All American RV Parks membership card for discount: • 50% off regular rate. Rate is good for 5 days, Sunday through Thursday. Discount is not valid on Holidays. • Fox Hill RV Park & Campground is located less than 5 minutes from I-90/I-94.

K & L Campground
3503 City Rd G
Wisconsin Dells, WI 53965
608-586-4720
Email: kandleg@maqs.net
Website: kandlcampground.info



Highway 23 East to County Rd G, turn north, travel 6 1/2 miles to K & L Campground

• Wisconsin Dells is the home of Exhilarating roller coasters, jet boats, extreme attractions, America's largest indoor waterparks and picturesque river tours that will thrill you. Browse antique and specialty shops. Experience great museums and concerts, and enjoy excellent dining all just minutes away from the campground. Activities on site include, Horseshoes, Volleyball, Fishing, Swimming Pool & Beach, Game Room, Basketball, Softball Field, Playground and Whiffle Ball Golf Course. The Campground offer rentals for Canoes, Kayaks, Paddleboats, Row Boats and Peddle Cars.



Must present All American RV Parks membership card for discount: • 50% off regular rate. Rate is good Sunday through Thursday. Not valid on holidays or week-ends. 50 amp \$5.00 per day.

Tilleda Falls Campground
W13165 County Hwy D
Tilleda, WI 54978
715-787-4143
Email: camp@tilledafalls.com
Website: www.tilledafalls.com



15 miles west of Shawano on State Highway 29 then 1 mile north on County Road D.

• 44 sites, water and electric accommodates up to 40' rig • 20 to 30 amp electrical services • Two comfort stations • One dump station • Waterfall and grade 1 trout stream • Free WiFi hot spot • Pedal carts, fun cycles • Swim zone, beach, canoeing, nature trails • Campground store, recreation room and gift shop



Must present All American RV Parks membership card for discount: • 50% off regular rate. Rate is good for 4 nights, Sunday (night) through Wednesday (night).

West Bay Camping Resort

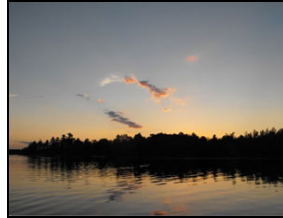
4330 South Shore Drive
PO Box 338
Rhineland, WI 54501
715-362-3481

Email: westbaycamping@frontiernet.net
Website: www.westbaycampingresort.com



FROM Rhineland, go East on County Road P or old US Business 8, 1/2 Mile past the intersection of Highway 17N. Go Left on North Faust Lake Road immediately turn Right on South Shore Dr. The Resort is located 1.5 miles on Left.

• 45 full hookup sites (water, sewer & electric) • 10 primitive tent sites & 5 cabins • Showers, laundry • Heated pool • Store, internet • Sandy beach with swimming area, pier, fishing, boat launch, boat rentals and more



Must present All American RV Parks membership card for discount: • 50% off regular rate. Rate is good for 3 days. • 3 night minimum stay for Holiday weekends (Memorial Day, 4th of July, Hodag, Labor Day. • Not valid for long-term stays over 5 days. • No washers/dryers in units may be used. • Cash or check only, no credit cards accepted. • 5% sales tax .05% county tax. • Rates are for 4 people, \$2 per each additional person • Open May 1st through Oct 1st.

Chuck Wagon RV Park

306 Pioneer Ct
Ft Laramie, WY 82212
307-837-2828 • 307-413-2893
Email: acd4021@gmail.com
Website: chuckwagonrv.com



Intersection of US Hwy. 26 & State Hwy. 160. Within the City Limits of the town of Fort Laramie.

• Dump Station • Laundry • Restrooms • Drinking Water • Full Hookups • Grills • ADA Compliant • Pets on Leash • Pull Thru Sites • Restaurant Nearby • Picnic Tables • Tenter's Welcome • Electric 30 Amp and 50 Amp



Must present All American RV Parks membership card for discount: • 50% off regular rate • Rate is good for 2 days • \$5.00 charge for 50 amp service • No weekends or holidays

Powder River Campgrounds & Cabins

101 Old Barnum Rd

Kaycee, WY 82639

307-738-2233

Email: kcrv@rtconnect.net

Website: [None](#)



EXIT 254 off from I-25 go east at first stop sign, turn right, go about ½ mile, campground on right- hand side.

• 15 total Pull-thru RV sites with full hookups (20/30/50 amp) • Can accommodate RVs up to 70' • Laundry, showers, toilets • Dump station • Picnic area • Walking distance to downtown Kaycee • Pets welcome (must be leashed) • Horses welcome • No smoking • Close to excellent hunting, fishing, hiking, and 4-wheeling



Must present All American RV Parks membership card for discount: • 50% off regular rate. Rate is good for 4 days. Tent rates are for 2 adults & 2 children per tent.
